

## MSI400



**190129**

**ENGLISH**

**Table of contents**

**1. Safety ..... 18**  
1.1 Key to symbols ..... 18  
1.2 Safety instructions ..... 19  
1.3 Use as intended ..... 22  
1.4 Use against the intended purpose ..... 22

**2. General information ..... 23**  
2.1 Liability and Warrantees ..... 23  
2.2 Copyright protection ..... 23  
2.3 Declaration of conformity ..... 23

**3. Transport, packaging and storage ..... 24**  
3.1 Delivery check ..... 24  
3.2 Packaging ..... 24  
3.3 Storage ..... 24

**4. Technical data ..... 25**  
4.1 Overview of parts ..... 25  
4.2 Technical specification ..... 26

**5. Installation and operation ..... 27**  
5.1 Installation ..... 27  
5.2 Operation ..... 28

**6. Cleaning ..... 31**

**7. Waste disposal ..... 32**

Bartscher GmbH  
Franz-Kleine-Str. 28  
33154 Salzkotten  
Germany

phone: +49 5258 971-0  
fax: +49 5258 971-120  
**Service-Hotline:** +49 5258 971-197  
[www.bartscher.com](http://www.bartscher.com)



**Read this instruction manual before using and keep them available at all times!**

This instruction manual contains information about the installation, operation and maintenance of the device and should be consulted as an important source of information and reference guide.

Awareness of the safety instructions and instructions for use in this manual will ensure the safe and correct use of the device.

In addition to the information given here, you should comply with any local Health and safety Controls and generally applicable safety regulations.

The instruction manual forms part of the product and should be kept near the device and easily accessible for anyone carrying out the installation, servicing, maintenance or cleaning.

Please keep these instructions and give them to future owners of the device.

## 1. Safety

This device is designed in accordance with the presently applicable technological standards. However, the device can pose a danger if handled improperly and inappropriately.

All persons using the device must follow the recommendations and instructions in this instruction manual.

### 1.1 Key to symbols

In this manual, symbols are used to highlight important safety instructions and any advice relating to the device. The instructions should be followed very carefully to avoid any risk of accident, personal injury or material damage.



**DANGER!**

This symbol highlights hazards which could lead to injury.



**WARNING!**

This symbol highlights dangerous situations which could lead to injury or death.



### HOT SURFACE!

This symbol is a warning that the device surface is hot when in use. Ignoring this warning may result in burns!



### CAUTION!

This symbol highlights dangerous situations which could lead to light injuries, or damage, malfunction, and/or destruction of the device.



### NOTE!

This symbol highlights recommendations and information aimed for effective and trouble-free device operation.

## 1.2 Safety instructions

- The device can be used by children **8 years and up**, as well as by people with disabilities and those with limited experience/knowledge as long as they are under supervision or have been instructed on proper use of the device and its possible dangers. **Children** should not play with the device. Cleaning and **maintenance cannot be performed by children. Children under the age of 8 years old** must be kept away from the device and its power cord.
- **Never** leave the device unattended when in use.
- Only use the device indoors.
- The device is not adapted for use with an external timer or remote control.
- The device must be operated in correct and safe technical condition only. In case of operational problems disconnect the device from the power supply (pull the plug from the socket) and contact the service company.
- Prevent access of children to the package materials like plastic bags and foamed polystyrene elements. **Suffocation hazard!**

- Only a qualified technician and using original spare parts and accessories should carry out repairs and maintenance of the device.  
**Do not attempt to repair the device yourself.**
- Do not use any accessory or spare parts that have not been recommended by the manufacturer. These can be dangerous for the user or lead to damages of the device or personal injury, and further, the warranty expires.
- To prevent hazards and to ensure optimum efficiency, no modifications or alterations to the device that are not explicitly approved by the manufacturer may be undertaken.



## **DANGER! Electric shock hazard!**

To avoid the hazard results please follow the safety instructions below.

- Never allow the power cable to come into contact with heat sources or sharp edges. The power cable should not hang over the side of the working surface. Ensure that no one can step on or trip over the cable.
- The power cable must not be folded, bent or tangled, and must always remain fully unrolled. Never place the device or other objects on the power cable.
- Do not cover the cable. Keep away the cable from operating range and do not immerse it into water.
- Check the power cord regularly for damage. Do not use the appliance if the power cord is damaged. If this cable is damaged, it must be replaced by customer service or a qualified electrician in order to avoid dangers.

- The supply cable must be disconnected from the socket only by pulling the plug.
- Never carry or lift the device by the supply cable.
- In any case do not open the device housing. In case of electrical or mechanical modifications the **electric shock hazard** will occur.
- Never immerse the appliance, the power cord and the power plug in water or other liquids.
- Do not use any acid agents and make sure no water ingresses the device.
- **Never** operate the device with moist hands or standing on wet floor.
- Remove the plug from its socket:
  - when the device is not used,
  - in case of anomalies during operation,
  - before cleaning.



**HOT SURFACE! Burn hazard!**

To avoid the effects of this risk, follow the safety instructions presented below.

- The mug gets very hot when the device is in use. To avoid burns, do not touch it with bare hands. Remove it from the base only using its handle. To remove the lid from the mug use only the lid handle.
- The device remains hot for some time after it has been switched off. Leave it to cool off before cleaning.

### 1.3 Use as intended

Every use of the device for a different purpose and/or in a way that diverges from the intended use is not allowed and is assumed as the use against the intended purpose.

Any claims against the manufacturer or their authorized representatives as a consequence of experiencing damage resulting from the use against the intended purpose are inadmissible.

The liability for damage occurred during the use of the device against its intended purpose is borne solely and exclusively by the user.

Safety operation of the device is guaranteed only when it is used for its intended purpose and according to the instructions included in this manual.

**The device is not suitable for continuous commercial use.**

The device is intended for home use or in similar places such as:

- in kitchens, for store or office employees or in other service locations;
- in agricultural holdings;
- by guests of hotels, motels and other typical places of accommodation;
- in Bed & Breakfasts.

**The Milk frother is intended only for preparing foamed milk, mixing milk-based drinks or heating milk.**

### 1.4 Use against the intended purpose

Any use other than those mentioned in point “**1.3 Use as intended**“ is assumed as the use against the intended purpose and is not allowed.

The use against the intended purpose may lead to severe injury or damage caused by hazardous voltage, fire or high temperature. It is allowed to use the device to perform only the work described in the instruction manual. Improper use may cause the device damage.

Any manipulation with the device, assembly or maintenance work may be performed exclusively by the authorized service staff.

## 2. General information

### 2.1 Liability and Warrantees

All the information and instructions in this manual take into account standard safety regulations, current levels of technical engineering as well as the expertise and experience we have developed over the years.

The instruction manual was translated with all due care and attention. However, we do not accept liability for any translation errors. The German version of this instruction manual is definitive.

If the delivery consists of a special model, the actual scope of delivery may differ from the descriptions and illustrations in this manual. This is also the case for special orders or when the device has been modified in line with new technology.



#### **CAUTION!**

**Read this manual carefully and thoroughly before any operation of the device, and especially before turning it on!**

Manufacturer **is not liable** for any damages or faults caused by:

- violation of advice concerning operation and cleaning;
- use other than designed;
- alterations made by user;
- use of inadequate spare parts.

We reserve the right to make technical changes for purposes of developing and improving the useful properties.

### 2.2 Copyright protection

The instruction manual including any texts, drawings, images or other illustrations is copyright. No part of this publication may be reproduced, transmitted or used in any form or by any means without permission in writing from the manufacturer. Any person who commits any unauthorized act in relation to this publication shall be liable to claims for damages. All rights reserved.



#### **NOTE!**

**The contents, texts, drawings, pictures and any other illustrations are copyright and subject to other protection rights. Any person unlawfully using this publication is liable to criminal prosecution.**

### 2.3 Declaration of conformity



The device complies with the current standards and directives of the EU. We certify this in the EC declaration of conformity. If required we will be glad to send you the according declaration of conformity.



## 3. Transport, packaging and storage

### 3.1 Delivery check

Please check the delivery upon completeness and transport damage immediately after receipt. In case of visible damage do not accept or accept the delivery with reservation only.

Note the extent of damage on the carrier's bill of delivery. Trigger off the complaint.

Hidden damages should be reclaimed immediately after notice, as claims for damages can only be asserted within the effective period for complaints.

### 3.2 Packaging

Please do not throw away the covering carton of your device as it might be useful for storage purposes, when moving or, in case of damages, when the device must be sent back to a repair center. The outer and inner packing material should be removed completely from the device before installation.



**If you liked to dispose the packing, consider the regulations applicable in your country. Supply re-usable packing materials to the recycling.**

Please inspect the device upon completeness. In case any part is missing please contact our customer service center immediately.

### 3.3 Storage

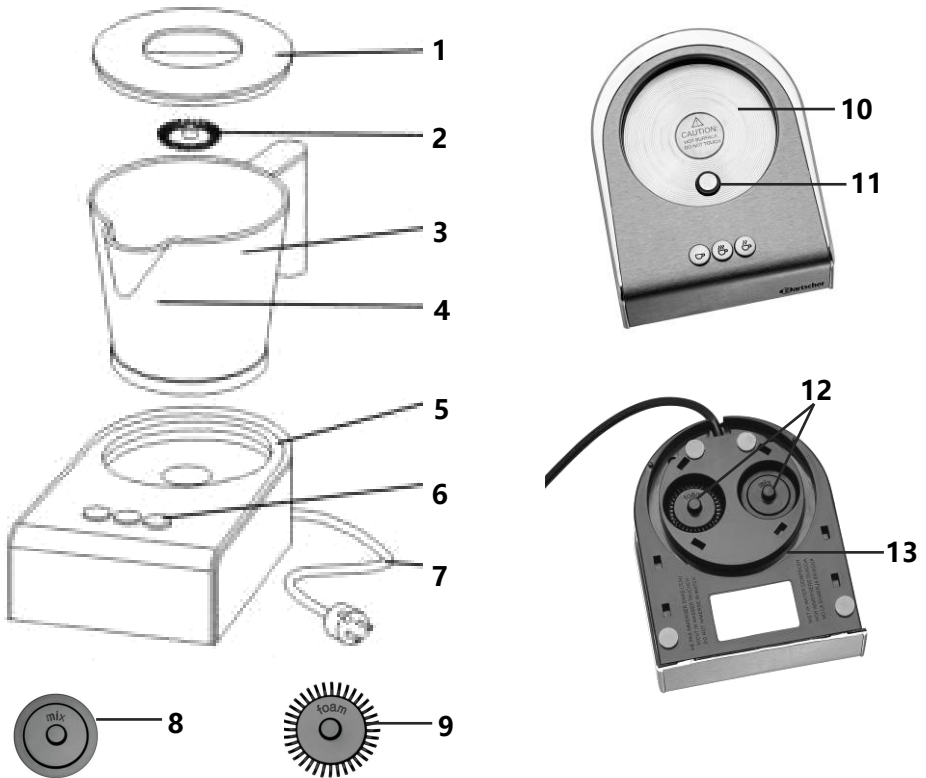
Keep the package closed until installation and under consideration of the outside indicated positioning- and storage markings.

Packages should be stored under consideration of the following:

- do not store outdoors,
- keep it dry and dust-free,
- do not expose it to aggressive media,
- do not expose it to direct sunlight,
- avoid mechanical shocks and vibration,
- in case of longer storage (> 3 months) make sure you check the state of the packaging and the parts regularly, if required refresh or renew.

## 4. Technical data

### 4.1 Overview of parts



- |   |                             |    |                    |
|---|-----------------------------|----|--------------------|
| 1 | Lid                         | 8  | Mixing disk        |
| 2 | Milk foaming disk           | 9  | Milk foaming disk  |
| 3 | Removable mug               | 10 | Heating plate      |
| 4 | <b>MIN/MAX</b> lines in mug | 11 | Switch             |
| 5 | Base                        | 12 | Mixing rod storage |
| 6 | Function buttons            | 13 | Cord storage       |
| 7 | Power cord                  |    |                    |

## 4.2 Technical specification

<b>Name</b>	<b>Milk frother Induction MSI400</b>
Code-no.:	<b>190129</b>
Material:	Base: stainless steel, Removable mug: stainless steel, lid: plastic
Functions (3):	cold foaming, 65 °C frothing/heating, 70 °C frothing/heating
Power:	0,6 kW   230 V   50/60 Hz
Dimensions:	W 125 x D 150 x H 180 mm
Weight:	1.1 kg
Equipment:	1 x mixing disk for milk-based drinks, 2 x milk foaming disk for frothed milk + hot chocolate

We reserve the right to make technical changes!

### Characteristics

- easy, fully-automatic foaming of milk to creamy or thick consistency, or simple heating;
- perfect for both hot and frozen coffee creations;
- automatic switch-off;
- no preheating of milk required - suitable for fresh milk of all fat levels;
- energy-saving induction technology: burning milk is impossible;
- Foaming of 150 ml of milk during approx. 80-90 seconds, heating of 400 ml of milk during approx. 240 seconds;
- 4 non-slip silicone feet;
- cord storage;
- easy cleaning: mug, lid and mixing rods dishwasher safe

## 5. Installation and operation

### 5.1 Installation

#### Positioning

- Unpack the device, remove and dispose of all package material according to the environment protection regulations.



#### **CAUTION!**

**Never remove the nameplate and warning signs from the device.**

- Put the device on an even, stable, dry and waterproof surface which is resistant to high temperature.
- **Never** place the device on an inflammable surface.
- Do not place the device near open flame, electric heaters or other heat source.
- **Never** place the device at the edge of a table to avoid tilting or falling.
- **Never** put the device in a moist or wet area.
- Place the device so that the plug is easily accessible so as to quickly disconnect the device if the need arises.

#### Connection



#### **DANGER! Electric shock hazard!**

**The device can cause injuries due to improper installation!**

**Before installation and connecting the local power grid specification should be compared with that of the device (see rating plate). Connect the device only in case of compliance!**

- The power supply circuit with the socket must be protected by the fuse of at least 16A. Connect the device directly to a single grounded socket. Do not use any power bar or multiple socket.

## 5.2 Operation

- Before using the device, clean it thoroughly in accordance with the instructions contained in 6 „Cleaning“.
- Place the device on a table, with a surface resistant to heat and which is dry, level and stable.
- Prepare milk for foaming.



### NOTE!

The heating function means makes preheating milk unnecessary.

### Preparing frothed milk



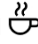
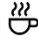

**Fig. 1** Remove the lid from the mug.

**Fig. 2** Place the milk foaming disk in the mug.

**Fig. 3** Pour the desired amount of milk into the mug (not above the **MAX** marking of 400 ml). If more milk is poured into the mug, it may splash during foaming.

**Fig. 4** Put the lid on the mug.

**Fig. 5** Place the mug on the heating plate. Connect the device to a single grounded socket.

- Fig. 6** To foam and heat milk, press  
the button marked  for heating milk to approx. 65 °C,  
the button marked  for heating milk to approx. 70 °C.  
To foam cold milk, press the button marked .


After activating the device, the control light for the relevant button will come on and milk will be foamed. After a short time (approx. 90 to 240 seconds) the device will turn off automatically, the control light will go odd and the mug may be removed; fill your coffee cup with cold/warm milk foam.

### Preparing hot chocolate





- Fig. 7** Remove the lid from the mug.
- Fig. 8** Place the milk foaming disk in the mug.
- Fig. 9** Pour the desired amount of milk into the mug (not above the **MAX** marking of 400 ml). If more milk is poured into the mug, it may splash during foaming.
- Fig. 10** Place the desired amount of chocolate powder into the mug.
- Fig. 11** Place the lid on the mug.

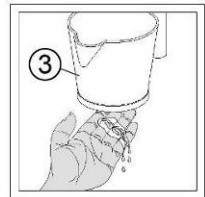
**Fig. 12** Place the mug on the heating plate. Connect the device to a single grounded socket.

**Fig. 13** Press the button marked  on the device's base; the control light will come on, then the chocolate will be heated. After between 90-480 seconds the device will turn off automatically and the control light will go off. Remove the mug with hot chocolate and pour into cups. If it becomes necessary to turn the device off during heating, press the button. To resume heating, press the button again.

## Heating milk

- Remove the lid from the mug.
- Remove the mixing disk from the mug.
- Pour the desired amount of milk into the mug and heat it by pressing the button marked  for heating milk to approx. 65 °C, the button marked  for heating milk to approx. 70 °C.
- When finished heating the device will turn off automatically.
- Remove the mug from its base and pour milk into your coffee cup.

- To speed up the heating process, place a bit of water on the bottom of the mug like in the picture.



## Preparing mixed milk-based drinks

- Remove the lid from the mug.
- Place the mixing disk inside the mug.
- Pour the desired amount of milk and extras into the mug (not above the **MAX** marking of 400 ml). If more milk is in the mug, it may spill over.
- Mix the drink.

## 6. Cleaning



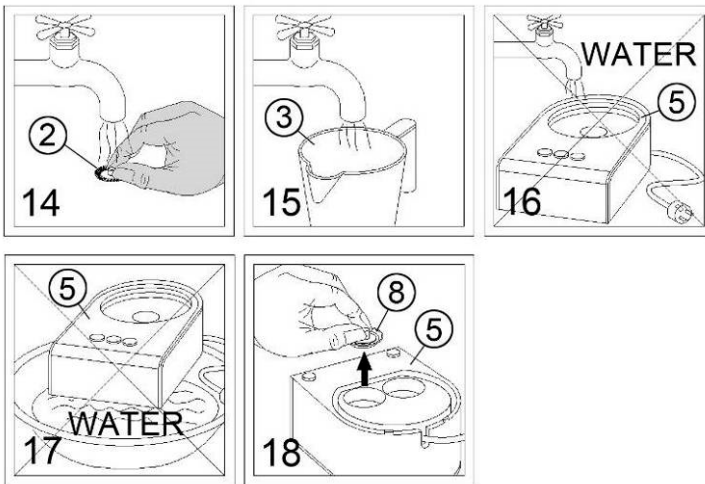
### WARNING!

Disconnect the device from the power supply (unplug!) before cleaning.  
Let the device cool down.

The device is not suited for direct washing via water jets!

Protect the device from water penetration.

- Clean the device regularly.
- Before cleaning, remove the device's plug from its socket and leave it to cool.



**Fig. 14** Wash the mixing disk and the milk foaming disks thoroughly under warm running water. As needed, a mild cleaning agent can be used. Rinse them with clean water to remove any leftover cleaning substances.

**Fig. 15** Pour a bit of warm water into the mug after every use in order to wet any remaining milk. Water will prevent leftover milk and flavours from gathering at the bottom of the mug. This makes cleaning easier, and avoids substances from burning during the next heating process. Use a **soft** brush or cloth for cleaning the mug. Rinse thoroughly with clean water.

**Fig. 16** **Never** wash the device's base under running water. Wipe the base with a soft, moist cloth.



**Fig. 17** Never immerse the device's base in water or other liquids. **If water gets inside the device it will cause a risk of electric shock when used.**

**Fig. 18** When finished using the device, place the mixing rods and power cord in the storage areas at the bottom of the device.

- Use only soft cloths, **never** use harsh cleaners that could damage the device's surface.
- After cleaning, dry the device's surface and polish with a dry cloth.

## 7. Waste disposal

### Old devices



The electric devices are marked with this symbol. You must not dispose of electric devices with household waste. When the device may not be longer used each consumer is obliged to dispose of the device at the dedicated local collection point, separately from household waste.



### NOTE!

Electric devices should be used and disposed of properly to prevent the impact on the environment.

- Disconnect the device from the power supply and remove the power cord from the device.