

Combi steamer Silversteam 5111DRS



Description

The Bartscher combi steamer from the Silversteam series has electronic controls, a cleaning system and 5 shelves in 1/1 GN format – it's the ideal partner for every kitchen. The rack control function allows diverse meals to be prepared at different times. What a relief that the Silversteam has everything under control for you!

Features

- Power load: 6,3 kW | 400 V | 50 Hz
- Equipment connection: 3 NAC
- Temperature range: 50 °C to 300 °C
- Control unit: Touch
- Functions:
 - Circulating air
 - Steam
 - Combi-steaming
 - Low temperature cooking
 - Delta-T cooking
 - Reversing motor direction (fan wheels)
 - Steam production by means of direct injection
 - Automatic 3-level cleaning system with drying program
- Rack control: Yes
- Continuous operation: Yes
- Vapour extractor: Yes
- Core temperature sensor connection: Side
- USB connection: Side

▶ Continue on the next page



▶ Up to 5 x 1/1 GN or 600 x 400 mm



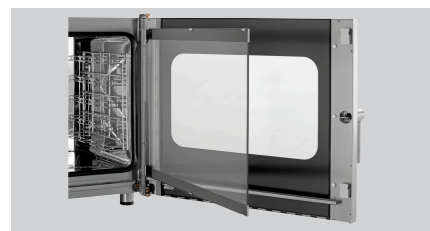
▶ Automatic 3-level cleaning system with drying program



▶ Rack control
 ✓ To enable the selection of a program for each shelf



▶ Electronic control with 600 programs (300 preinstalled, 300 programmable); up to 9 cooking phases per program



▶ Double door glazing, inner door can be opened easily for cleaning

Combi steamer Silversteam 5111DRS

- Fan speed: 3 levels
- Number of cooking programs: 300 pre-installed programs
300 configurable programs
- Number of cooking phases: 9
- Type of drawers: Crosswise
- Number of drawers: 5
- Distance between trays: 74 mm
- Water connection: 3/4"
- Time adjustment: 0 to 599 minutes
- Material cooking chamber: CNS 18/10
- Number of fans: 1
- Properties: Rounded baking chamber
Bearing rails can be detached
Double-winged door pane
LED lighting in door
Socket (500 W) for connection of an extractor hood
- LED display: Steaming
Delta-T cooking
Cooking phases
Core temperature
Fan speed
Program
Temperature
Time
- Available on request: -
- Including: 1 grille 1/1 GN
1 tray 1/1 GN
1 water supply hose
1 supply hose for cleaning agents
- Control lamp: -
- Series: Silversteam
- Temperature control: Stepless
- Interior lighting: Yes
- Format drawers: 1/1 GN
600 x 400 mm
- Operating mode: Electro
- With cleaning system: Yes
- Material: CNS 18/10
- Important information: From a water hardness of 5° dH upwards, we urgently recommend fitting a suitable water softener and a water pressure of maximum 3 bar
- Size: W 890 x D 835 x H 675 mm
- Weight: 86.8 kg



Combi steamer Silversteam 5111DRS

Add on Products

Combi steamer cleaner RS-5L



- Order quantity unit: 1 canister
- Designed for: Combi steamers with an automatic dosing system
- Ph level: 14
- HACCP compliant: No
- Chlorine-free: Yes
- Phosphate-free: No

Code-No. 116299V
GTIN 4015613813042

Smoker-Box 1160



STAINLESS
STEEL



- Material: Stainless steel
- Model: With heating coil
- Designed for: Combined steamer
- Important information: Maximum smoking temperature: 200 °C
- Comprising: Mains adapter
Smoker-Box
- Volume: 1,16

Code-No. 117712
GTIN 4015613779195

Cooking basket 110

STAINLESS
STEEL



- Gastronorm: 1/1 GN
- Size basket: W 490 x D 275 x H 50 mm
- Content: 7
- Material: Stainless steel
- Important information: -
- Size: W 536 x D 326 x H 61 mm
- Weight: 1.1 kg

Code-No. 900300
GTIN 4015613788111

Base unit Silversteam 110

CNS
18/10



- Number of drawers: 10
- Colour: Silver
- Format drawers: 1/1 GN
- Height-adjustable feet: Yes
- Base shelf: No
- Material: CNS 18/10
- Important information: -

Code-No. 115069
GTIN 4015613602486

Combi steamer Silversteam 511DRS

Add on Products

Base unit Silversteam 2-110

CNS

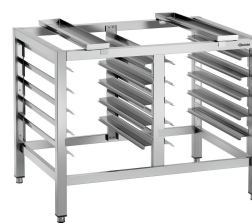


- Type of drawers: Longitudinal
- Number of drawers: 6
- Height adjustable: 400 mm to 450 mm
- Colour: Silver
- Format drawers: 1/1 GN
- Base shelf: No
- Material: Chrome-nickel steel

Code-No. 115071
GTIN 4015613617589

Base unit Silversteam 6040

CNS 18/10



- Material: CNS 18/10
- Colour: Silver
- Type of drawers: Longitudinal
- Number of drawers: 10
- Format drawers: 1/1 GN
- Base shelf: No

Code-No. 115079
GTIN 4015613682051

Guiding rails 6040 SST5110

CNS 18/10



- Important information: -
- Material: CNS 18/10
- Number of drawers: 4
- Distance between trays: 90 mm
- Format drawers: 600 x 400 mm
- Designed for: Combi steamers 5 x 1/1 GN, series Silversteam
- Size: W 385 x D 300 x H 43 mm

Code-No. 117051
GTIN 4015613761930

Core temperature sensor set 1KA

STAINLESS STEEL



- Set comprises: 1 core temperature sensor
1 holder
- Length cable: 1,8
- Material temperature sensor: Stainless steel
- Important information: -
- Designed for: Combi steamers series Silversteam
- Size: W 180 x D 265 x H 25 mm

Code-No. 116009
GTIN 4015613595139

Combi steamer Silversteam 511DRS

Add on Products

Pump set f. combi steamer



- Material: Plastic
Metal
- Important information: -

Code-No. 116011
GTIN 4015613595146

Combi steamer cleaner F10L



- Order quantity unit: 1 canister
- Designed for: Combi steamers with an automatic dosing system
- Content: 10 litres
- Model: Liquid
- Ph level: 13
- HACCP compliant: Yes

Code-No. 173279
GTIN 4015613767925

Power cleaner F1L



- Order quantity unit: 1 box (6 bottles)
- Content: 6 x 1 litre
- Model: Liquid
- HACCP compliant: Yes
- Chlorine-free: Yes
- Phosphate-free: Yes

Code-No. 173278
GTIN 4015613767918

Intensive power cleaner F1L



- Order quantity unit: 1 box (6 bottles)
- Content: 6 x 1 litre
- Model: Liquid
- HACCP compliant: Yes
- Chlorine-free: Yes
- Phosphate-free: Yes

Code-No. 173280
GTIN 4015613761183

Combi steamer Silversteam 5111DRS

Add on Products

Pressure regulator



- Material: Brass
Chrome-plated
- Important information: -
- Water pressure: 1 - 6 bar (preset to 3 bar)
- Connection: 3/4"
- Operating temperature max.: 65
- Incoming pressure max.: 16

Code-No. 533051
GTIN 4015613468617

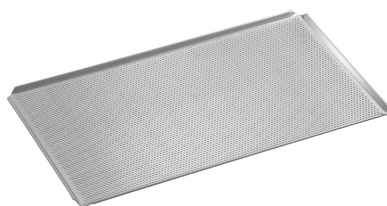
Baking tray 1/1-AL



- Gastronorm: 1/1 GN
- Edge: 4 sides, cover
- Silicone coating: No
- Material thickness: 1,5
- Perforation: No
- Temperature resistant to: 260
- Material: Aluminium

Code-No. 100426
GTIN 4015613734743

Perforated tray 1/1-AL



- Diameter perforation: 3
- Gastronorm: 1/1 GN
- Silicone coating: No
- Material thickness: 1,5
- Perforation: Yes
- Temperature resistant to: 260
- Material: Aluminium

Code-No. 100427
GTIN 4015613734750

Perforated tray 1/1-SI



- Diameter perforation: 3
- Important information: -
- Material: Aluminium
- Gastronorm: 1/1 GN
- Silicone coating: Yes
- Material thickness: 1,5
- Perforation: Yes

Code-No. 100428
GTIN 4015613734767

Combi steamer Silversteam 5111DRS

Add on Products

Grill plate



- Gastronorm: 1/1 GN
- Roasting surface design: Diamond patterned
- With juice groove: Yes
- Material: Cast aluminium
- Important information: -
- Size: W 530 x D 325 x H 15 mm
- Weight: 2.8 kg

Code-No. 106576
GTIN 4015613660783

Cooking pergament 1/1 GN

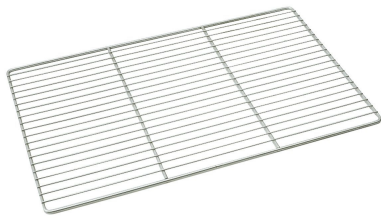


- GN-capable: Yes
- Material: Paper
- Important information: -
- Order quantity unit: 1 box (500 sheets)
- Format per sheet: 1/1 GN, W 530 x D 325 mm
- Heat resistant to: 220
- Size: W 530 x D 325 x H 1 mm

Code-No. 150687
GTIN 4015613711423

GN grid 1/1, SS

CNS
18/10



- Material: CNS 18/10
- Important information: -
- Gastronorm: 1/1 GN
- Norm: EN 631
- Series: Top Line
- Size: W 325 x D 530 x H 10 mm
- Weight: 0.95 kg

Code-No. A101091
GTIN 4016098175250

Tray 1/1GN, 20 mm

CNS
18/10



- Stackable: Yes
- Design: No perforation
- Reinforced edge: Yes
- Properties: -
- Depth container: 20 mm
- Gastronorm: 1/1 GN
- Material: CNS 18/10

Code-No. A101185
GTIN 4015613271729

Combi steamer Silversteam 5111DRS

Add on Products

GN container, 1/1, D65

CNS
18/10



- Content: 9
- Stackable: Yes
- Design: No perforation
- Reinforced edge: No
- Properties: -
- Surface: High-gloss
- Depth container: 65 mm

Code-No. A121065
GTIN 4016098162755

Oven gloves 420

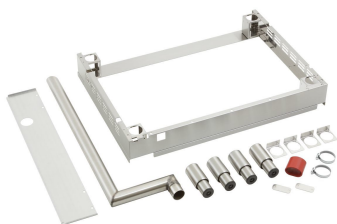


- Properties: With flame protection
With hanger
Fabric density: 640 g/m²
- Material: Cotton 100 % (exterior)
- Colour: Black
- Important information: Do not wash to maintain flame protection
- Can be washed: No

Code-No. A500512
GTIN 4015613735481

Connection kit Silversteam

STAINLESS
STEEL



- Set comprises: 1 frame
1 pipe and holding plate for vapour extraction
1 connection hose
4 feet
Attachment circlips
Screws
- Size frame: W 876 x D 622 x H 114 mm

Code-No. 116012
GTIN 4015613607078

Extractor hood Silversteam



CNS



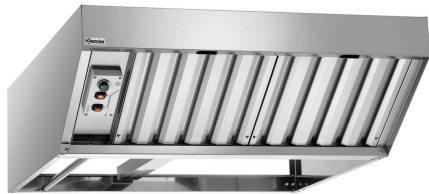
- Material: Chrome-nickel steel
- ON/OFF switch: Yes
- Motor Power: 100 m³/h to 540 m³/h
- Important information: -
- Assembly type: Top of appliance
- Fan regulation: Stepless

Code-No. 116016
GTIN 4015613620503

Combi steamer Silversteam 5111DRS

Add on Products

Condensation hood Silversteam



- ON/OFF switch: Yes
- Motor Power: 800 m3/h to 1500 m3/h
- Fan regulation: Manual
Stepless
Toggle
- Number of fan motors/exhaust air outputs: 1

Code-No. 116019
GTIN 4015613702773

Perforated tray 600x400-ALB



- Perforation: Yes
- Material: Aluminium
Non stick coating
- Material thickness: 2
- Important information: -
- Edge: 4 sides
- Silicone coating: No

Code-No. 100438
GTIN 4015613863504

Baking tray 600x400-ALB



- Material: Aluminium
Non stick coating
- Perforation: No
- Material thickness: 2
- Important information: -
- Edge: 4 sides
- Silicone coating: No

Code-No. 100439
GTIN 4015613863511