

Combi steamer Silversteam 5111M



Description

The Bartscher combi steamer from the Silversteam series has 5 shelves in 1/1 GN format – it's the ideal partner for every kitchen. The manual controls enable the easy, on-demand control of all cooking processes.

Features

- Power load: 6,3 kW | 400 V | 50 Hz
- Equipment connection: 3 NAC
- Temperature range: 50 °C to 280 °C
- Control unit: Toggle
- Functions:
 - Circulating air
 - Steam
 - Combi-steaming
 - Low temperature cooking
 - Reversing motor direction (fan wheels)
 - Steam production by means of direct injection
- Rack control: No
- Continuous operation: Yes
- Vapour extractor: Yes
- Core temperature sensor connection: Side
- USB connection: -
- Fan speed: 2 levels
- Number of cooking programs: 1

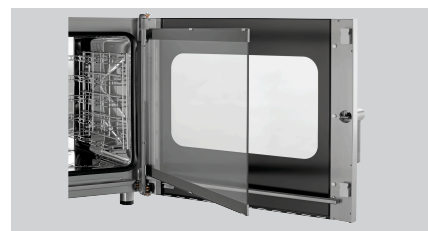
▶ Continue on the next page



▶ Up to 5 x 1/1 GN or 600 x 400 mm



▶ Easy knob operation



▶ Double door glazing, inner door can be opened easily for cleaning



▶ Vapour extractor is easy to regulate



▶ Bearing rails can be detached

Combi steamer Silversteam 5111M

- Number of cooking phases: 1
- Type of drawers: Crosswise
- Number of drawers: 5
- Distance between trays: 74 mm
- Water connection: 3/4"
- Time adjustment: 0 to 120 minutes
- Material cooking chamber: CNS 18/10
- Number of fans: 1
- Properties:
 - Rounded baking chamber
 - Bearing rails can be detached
 - Double-winged door pane
 - LED lighting in door
 - Socket (500 W) for connection of an extractor hood
- LED display:
 - Steaming
 - Core temperature
 - Temperature
 - Time
- Including:
 - 1 grille 1/1 GN
 - 1 tray 1/1 GN
 - 1 water supply hose
- Available on request: -
- Control lamp:
 - ON/OFF
 - Temperature
- Series: Silversteam
- Temperature control: Stepless
- Interior lighting: Yes
- Format drawers: 1/1 GN
- Operating mode: 600 x 400 mm
- With cleaning system: Electro
- Material: No
- Important information: CNS 18/10
- Size: From a water hardness of 5° dH upwards, we urgently recommend fitting a suitable water softener and a water pressure of maximum 3 bar
- Weight: W 890 x D 835 x H 675 mm
- Weight: 82.3 kg



Combi steamer Silversteam 5111M

Add on Products

Base unit Silversteam 110

CNS
18/10



- Number of drawers: 10
- Colour: Silver
- Format drawers: 1/1 GN
- Height-adjustable feet: Yes
- Base shelf: No
- Material: CNS 18/10
- Important information: -

Code-No. 115069
GTIN 4015613602486

Base unit Silversteam 2-110

CNS



- Type of drawers: Longitudinal
- Number of drawers: 6
- Height adjustable: 400 mm to 450 mm
- Colour: Silver
- Format drawers: 1/1 GN
- Base shelf: No
- Material: Chrome-nickel steel

Code-No. 115071
GTIN 4015613617589

Base unit Silversteam 6040

CNS
18/10



- Material: CNS 18/10
- Colour: Silver
- Type of drawers: Longitudinal
- Number of drawers: 10
- Format drawers: 1/1 GN
- Base shelf: No

Code-No. 115079
GTIN 4015613682051

Cooking basket 110

STAINLESS
STEEL



- Gastronorm: 1/1 GN
- Size basket: W 490 x D 275 x H 50 mm
- Content: 7
- Material: Stainless steel
- Important information: -
- Size: W 536 x D 326 x H 61 mm
- Weight: 1.1 kg

Code-No. 900300
GTIN 4015613788111

Combi steamer Silversteam 5111M

Add on Products

Core temperature sensor set 1KA

STAINLESS
STEEL



- Set comprises: 1 core temperature sensor
1 holder
- Length cable: 1,8
- Material temperature sensor: Stainless steel
- Important information: -
- Designed for: Combi steamers series Silversteam
- Size: W 180 x D 265 x H 25 mm

Code-No. 116009
GTIN 4015613595139

Pump set f. combi steamer



- Material: Plastic
Metal
- Important information: -

Code-No. 116011
GTIN 4015613595146

Hand shower f. combi steamer



- Length hose: 2
- Properties: Shutoff valve for fixed connection to water supply 1/2"
- Including: 1 holder
- Important information: -
- Water connection: 1/2"

Code-No. 116005
GTIN 4015613587189

Combi steamer cleaner RS-5L



- Order quantity unit: 1 canister
- Designed for: Combi steamers with an automatic dosing system
- Ph level: 14
- HACCP compliant: No
- Chlorine-free: Yes
- Phosphate-free: No

Code-No. 116299V
GTIN 4015613813042

Combi steamer Silversteam 5111M

Add on Products

Guiding rails 6040 SST5110

CNS 18/10



- Important information: -
- Material: CNS 18/10
- Number of drawers: 4
- Distance between trays: 90 mm
- Format drawers: 600 x 400 mm
- Designed for: Combi steamers 5 x 1/1 GN, series Silversteam
- Size: W 385 x D 300 x H 43 mm

Code-No. 117051
GTIN 4015613761930

Smoker-Box 1160



STAINLESS STEEL



- Material: Stainless steel
- Model: With heating coil
- Designed for: Combined steamer
- Important information: Maximum smoking temperature: 200 °C
- Comprising: Mains adapter
Smoker-Box
- Volume: 1,16

Code-No. 117712
GTIN 4015613779195

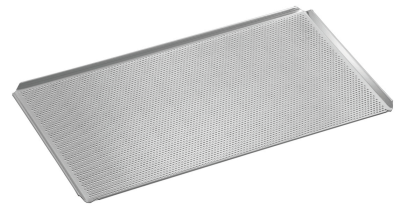
Baking tray 1/1-AL



- Gastronorm: 1/1 GN
- Edge: 4 sides, cover
- Silicone coating: No
- Material thickness: 1,5
- Perforation: No
- Temperature resistant to: 260
- Material: Aluminium

Code-No. 100426
GTIN 4015613734743

Perforated tray 1/1-AL



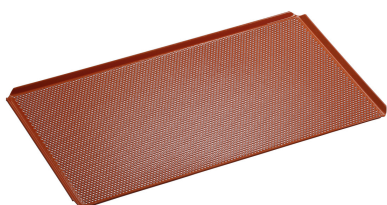
- Diameter perforation: 3
- Gastronorm: 1/1 GN
- Silicone coating: No
- Material thickness: 1,5
- Perforation: Yes
- Temperature resistant to: 260
- Material: Aluminium

Code-No. 100427
GTIN 4015613734750

Combi steamer Silversteam 5111M

Add on Products

Perforated tray 1/1-SI



- Diameter perforation: 3
- Important information: -
- Material: Aluminium
- Gastronorm: 1/1 GN
- Silicone coating: Yes
- Material thickness: 1,5
- Perforation: Yes

Code-No. 100428
GTIN 4015613734767

Cooking pergament 1/1 GN



- GN-capable: Yes
- Material: Paper
- Important information: -
- Order quantity unit: 1 box (500 sheets)
- Format per sheet: 1/1 GN, W 530 x D 325 mm
- Heat resistant to: 220
- Size: W 530 x D 325 x H 1 mm

Code-No. 150687
GTIN 4015613711423

Grill plate

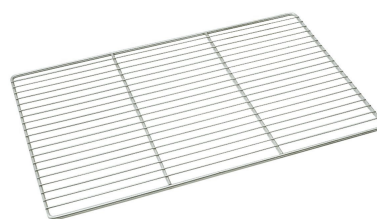


- Gastronorm: 1/1 GN
- Roasting surface design: Diamond patterned
- With juice groove: Yes
- Material: Cast aluminium
- Important information: -
- Size: W 530 x D 325 x H 15 mm
- Weight: 2.8 kg

Code-No. 106576
GTIN 4015613660783

GN grid 1/1, SS

CNS
18/10



- Material: CNS 18/10
- Important information: -
- Gastronorm: 1/1 GN
- Norm: EN 631
- Series: Top Line
- Size: W 325 x D 530 x H 10 mm
- Weight: 0.95 kg

Code-No. A101091
GTIN 4016098175250

Combi steamer Silversteam 5111M

Add on Products

Tray 1/1GN, 20 mm

CNS 18/10



- Stackable: Yes
- Design: No perforation
- Reinforced edge: Yes
- Properties: -
- Depth container: 20 mm
- Gastronorm: 1/1 GN
- Material: CNS 18/10

Code-No. A101185
GTIN 4015613271729

GN container, 1/1, D65

CNS 18/10



- Content: 9
- Stackable: Yes
- Design: No perforation
- Reinforced edge: No
- Properties: -
- Surface: High-gloss
- Depth container: 65 mm

Code-No. A121065
GTIN 4016098162755

GN container, 1/1, D100, perforated

CNS 18/10



- Content: 14
- Stackable: Yes
- Design: With perforation (holes)
- Reinforced edge: No
- Properties: -
- Surface: High-gloss
- Depth container: 100 mm

Code-No. A101100
GTIN 4016098175236

Oven gloves 420



- Properties: With flame protection
With hanger
Fabric density: 640 g/m²
- Material: Cotton 100 % (exterior)
- Colour: Black
- Important information: Do not wash to maintain flame protection
- Can be washed: No

Code-No. A500512
GTIN 4015613735481

Combi steamer Silversteam 5111M

Add on Products

Power cleaner F1L



- Order quantity unit: 1 box (6 bottles)
- Content: 6 x 1 litre
- Model: Liquid
- HACCP compliant: Yes
- Chlorine-free: Yes
- Phosphate-free: Yes

Code-No. 173278
GTIN 4015613767918

Intensive power cleaner F1L



- Order quantity unit: 1 box (6 bottles)
- Content: 6 x 1 litre
- Model: Liquid
- HACCP compliant: Yes
- Chlorine-free: Yes
- Phosphate-free: Yes

Code-No. 173280
GTIN 4015613761183

Pressure regulator

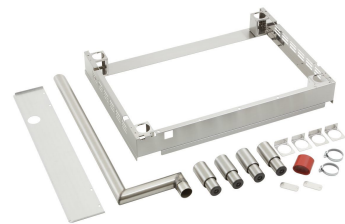


- Material: Brass
Chrome-plated
- Important information: -
- Water pressure: 1 - 6 bar (preset to 3 bar)
- Connection: 3/4"
- Operating temperature max.: 65
- Incoming pressure max.: 16

Code-No. 533051
GTIN 4015613468617

Connection kit Silversteam

STAINLESS
STEEL



- Set comprises: 1 frame
1 pipe and holding plate for vapour extraction
1 connection hose
4 feet
Attachment circlips
Screws
- Size frame: W 876 x D 622 x H 114 mm

Code-No. 116012
GTIN 4015613607078

Combi steamer Silversteam 5111M

Add on Products

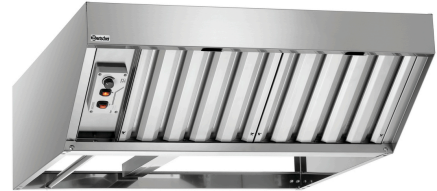
Extractor hood Silversteam



- Material: Chrome-nickel steel
- ON/OFF switch: Yes
- Motor Power: 100 m3/h to 540 m3/h
- Important information: -
- Assembly type: Top of appliance
- Fan regulation: Stepless

Code-No. 116016
GTIN 4015613620503

Condensation hood Silversteam



- ON/OFF switch: Yes
- Motor Power: 800 m3/h to 1500 m3/h
- Fan regulation: Manual
Stepless
Toggle
- Number of fan motors/exhaust air outputs: 1

Code-No. 116019
GTIN 4015613702773

Perforated tray 600x400-ALB



- Perforation: Yes
- Material: Aluminium
Non stick coating
- Material thickness: 2
- Important information: -
- Edge: 4 sides
- Silicone coating: No

Code-No. 100438
GTIN 4015613863504

Baking tray 600x400-ALB



- Material: Aluminium
Non stick coating
- Perforation: No
- Material thickness: 2
- Important information: -
- Edge: 4 sides
- Silicone coating: No

Code-No. 100439
GTIN 4015613863511