

Convection baking oven HC6040-5



Description

Steam generation perfectly tailored for the baked goods: Either via the external steam box or via direct injection - the AirFresh Box of the convection oven ensures a crispy exterior by quickly reducing the humidity. The multi-selection toggle switch with multi-coloured LED lighting enables intuitive operation with an additional visual signal.

Features

- Steam-box power: 3 kW
- Material baking chamber: Stainless steel
- Heating type: Convection
- Format drawers: 600 x 400 mm
- Type of drawers: Crosswise
- Number of drawers: 5
- Distance between trays: 90 mm
- Temperature range to: 250 °C
- Temperature control: In 1 °C steps
- Heating output: 11 kW
- Number of programs: 15 pre-installed programs
84 programmable manually adjustable program
- Number of baking phases: 6

▶ Continue on the next page



▶ 5 shelves 600 x 400 mm



- ▶ 99 programs
- ▶ 6 baking phases
- ▶ 6 parameters



- ▶ Steam generator: Choice of internal or external
 - ✓ Direct injection
 - ✓ External steam box



▶ AirFresh box

Convection baking oven HC6040-5



<ul style="list-style-type: none"> Parameters per baking phase: 	<ul style="list-style-type: none"> Baking temperature Baking time Steaming intensity Fan speed Vapour extractor Pre-heating
<ul style="list-style-type: none"> AirFresh box: Time setting: 	<ul style="list-style-type: none"> Yes 1 to 99 minutes Continuous operation Manual baking time extension
<ul style="list-style-type: none"> Automatic switch-on via timer: Automatic pre-heating: Automatic cooling: Fan speed: With cleaning system: Number of fans: Reversing motor direction: USB connection: Interior lighting: 	<ul style="list-style-type: none"> Yes Yes Yes 10 levels Yes 1 Yes Yes In the door LED
<ul style="list-style-type: none"> Display: 	<ul style="list-style-type: none"> Date and time LCD, 7 inches Programs Cleaning Timer settings
<ul style="list-style-type: none"> Equipment connection: Properties: 	<ul style="list-style-type: none"> 3 NAC Bearing rails and rear wall can be detached Double-winged door pane Consistent results when the baking chamber is full Fan stop after steaming process Programs from other devices can be imported Programs with all parameters can be copied within the menu Fast change of fan direction
<ul style="list-style-type: none"> Including: Power load: Material: Series: Steam generators: 	<ul style="list-style-type: none"> - 12,1 kW 400 V 50/60 Hz Stainless steel HC Direct injection External steam-box
<ul style="list-style-type: none"> Steaming: 	<ul style="list-style-type: none"> Set in the program Manual Manual selection of the steaming system
<ul style="list-style-type: none"> Control unit: 	<ul style="list-style-type: none"> Multi-selective toggle with LED lighting Touch
<ul style="list-style-type: none"> Estimated delivery time from our warehouse in Salzkotten, Germany is week: 	<ul style="list-style-type: none"> 31 / 2022
<ul style="list-style-type: none"> Water connection: Important information: 	<ul style="list-style-type: none"> R3/4" A pressure reducer is required from a water pressure of 3,5 bar Upstream connection of a water softener is always required The LBO20 installation kit is required for individual device operation (the corresponding installation kit must be selected for the combined device configuration)
<ul style="list-style-type: none"> Size: Weight: 	<ul style="list-style-type: none"> W 980 x D 900 x H 730 mm 158.8 kg

Convection baking oven HC6040-5 Add on Products

Oven gloves 300



- Properties: With flame protection
With hanger
Fabric density: 640 g/m²
- Material: Cotton 100 % (exterior)
- Colour: Black
- Important information: Do not wash to maintain flame protection
- Can be washed: No

Code-No. A500510
GTIN 4015613735467

Oven gloves 370



- Properties: With flame protection
With hanger
Fabric density: 640 g/m²
- Material: Cotton 100 % (exterior)
- Colour: Black
- Important information: Do not wash to maintain flame protection
- Can be washed: No

Code-No. A500511
GTIN 4015613735474

Oven gloves 420



- Properties: With flame protection
With hanger
Fabric density: 640 g/m²
- Material: Cotton 100 % (exterior)
- Colour: Black
- Important information: Do not wash to maintain flame protection
- Can be washed: No

Code-No. A500512
GTIN 4015613735481

Oven gloves 600



- Properties: With flame protection
With hanger
Fabric density: 640 g/m²
- Material: Cotton 100 % (exterior)
- Colour: Black
- Important information: Do not wash to maintain flame protection
- Can be washed: No

Code-No. A500513
GTIN 4015613735498

Convection baking oven HC6040-5

Add on Products

Installation kit LBO20



- Set comprises:
 - Condensate collection box
 - Condensate hoses
 - Installation materials
 - Water drainage hoses
 - Water supply pressure gauge
 - Water supply hoses
 - Vapour extractor

Code-No. 117923
GTIN 4015613771762

Intensive power cleaner F1L



- Order quantity unit: 1 box (6 bottles)
- Content: 6 x 1 litre
- Model: Liquid
- HACCP compliant: Yes
- Chlorine-free: Yes
- Phosphate-free: Yes

Code-No. 173280
GTIN 4015613773353

Stainl.steel polish.spray 500ml can



- Content / can: 500 ml
- Application: Remove heavy soiling such as grease residue first
Do not spray onto hot surfaces
- allow them to cool down first:

Code-No. 173031
GTIN 4015613360195

Base frame LBO6040-5

STAINLESS
STEEL



- Material: Stainless steel
- Height-adjustable feet: No
- Format drawers: 600 x 400 mm
- Base shelf: No
- Number of drawers: 5
- Important information: Designed for: Convection ovens MC, convection ovens HC, deck oven CL6040-1

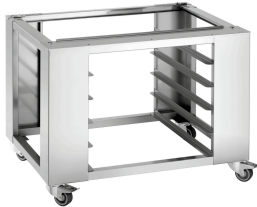
Code-No. 117930
GTIN 4015613796413

Convection baking oven HC6040-5

Add on Products

Base frame LBO6040-4

STAINLESS STEEL



- Format drawers: 600 x 400 mm
- Height-adjustable feet: No
- Material: Stainless steel
- Number of drawers: 4
- Base shelf: No
- Important information: Designed for: Convection ovens MC, convection ovens HC, deck oven CL6040-1

Code-No. 117931
GTIN 4015613769967

Base frame LBO6040-3

STAINLESS STEEL



- Format drawers: 600 x 400 mm
- Height-adjustable feet: No
- Material: Stainless steel
- Number of drawers: 3
- Base shelf: No
- Important information: Designed for: Convection ovens MC, convection ovens HC, deck oven CL6040-1

Code-No. 117932
GTIN 4015613796420

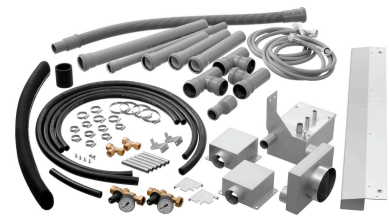
Installation kit LBO50



- Set comprises:
 - Condensate collection box
 - Condensate hoses
 - Installation materials
 - Water drainage hoses
 - Water supply pressure gauge
 - Water supply hoses
 - Vapour extractor

Code-No. 117937
GTIN 4015613796505

Installation kit LBO60



- Set comprises:
 - Condensate collection box
 - Condensate hoses
 - Installation materials
 - Water drainage hoses
 - Water supply pressure gauge
 - Water supply hoses
 - Vapour extractor

Code-No. 117938
GTIN 4015613796512

Convection baking oven HC6040-5

Add on Products

Installation kit LBO90



- Set comprises:
 - Condensate collection box
 - Condensate hoses
 - Installation materials
 - Water drainage hoses
 - Water supply pressure gauge
 - Water supply hoses
 - Vapour extractor

Code-No. 117947
GTIN 4015613796499

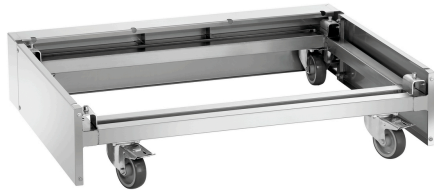
Guiding rails MCHC6040-6



- Format drawers: 600 x 400 mm
- Number of drawers: 6
- Material: Stainless steel
- Important information: -
- Estimated delivery time from our warehouse in Salzkotten, Germany is week: 31 / 2022

Code-No. 117920
GTIN 4015613796390

Rolling base MCHC2300



- Height-adjustable feet: No
- Material: Stainless steel
- Base shelf: No
- Important information: Designed for: Convection ovens MC, convection ovens HC
- Colour: Silver

Code-No. 117939
GTIN 4015613804903

Condensation hood LBO800



- Number of fan motors: 2
- Flame protection filter: No
- Number of filters: 0
- Material filter: -
- ON/OFF switch: No
- Important information: -
- Assembly type: Top of appliance

Code-No. 117940
GTIN 4015613769974

Convection baking oven HC6040-5 Add on Products

Baking tray 600x400-AL



- Bakery norm: 600 x 400 mm
- Edge: 3 sides
- Silicone coating: No
- Material thickness: 1,5 mm
- Perforation: No
- Temperature resistant to: 260 °C
- Material: Aluminium

Code-No. 100412
GTIN 4015613734699

Perforated tray 600x400-SI



- Diameter perforation: 3 mm
- Bakery norm: 600 x 400 mm
- Edge: 3 sides
- Silicone coating: Yes
- Material thickness: 1,5 mm
- Perforation: Yes
- Temperature resistant to: 260 °C

Code-No. 100416
GTIN 4015613734712

Grease drip container 600 x 400

STAINLESS
STEEL



- Bakery norm: 600 x 400 mm
- Material: Stainless steel
- Important information: -
- Size: W 605 x D 405 x H 45 mm
- Weight: 2.8 kg

Code-No. 525782
GTIN 4015613658414

Baking spray 500ml



- Content / can: 500 ml
- Material: 100 % vegetable oils
- Designed for: Greasing forms, baking trays, pans and waffle irons
- Important information: -
- Order quantity unit: 1 box of 6 cans (Minimum order quantity 2 boxes)

Code-No. 173060
GTIN 4015613498515

Convection baking oven HC6040-5

Add on Products

Perforated tray 600x400-AL



- Diameter perforation: 3 mm
- Bakery norm: 600 x 400 mm
- Edge: 3 sides
- Silicone coating: No
- Material thickness: 1,5 mm
- Perforation: Yes
- Temperature resistant to: 260 °C

Code-No. 100413
GTIN 4015613734705

Partial desalination system TKD 13400 FB



- Desalination type: Partial desalination
- Water connection: 3/4"
- Material: Plastic
Glass-fibre reinforced
- Sampling tap: Yes
- Colour: Blue
- Important information: -

Code-No. 109878
GTIN 4015613681597