

Wall-mounting shelf 1600x355x27, SS

Description

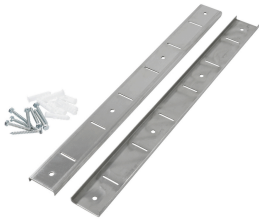
Features

- | | |
|--|--|
| • Material: | Stainless steel |
| • Important information: | - |
| • Delivery state: | Building kit (simple assembly) |
| • Number of shelves: | 1 |
| • Height-adjustable shelves: | Yes |
| • Assembly type: | Connecting system |
| • Total load-bearing capacity, max.: | 120 |
| • Design shelves: | Full-surface |
| • Including: | - |
| • Size Shelves: | W 1600 x D 355 mm |
| • Shelf type: | Wall shelf |
| • Modular kit principle - required for installation: | 1 pair of brackets (per wall shelf)
1 pair adjustment rails
Not included in delivery |
| • Properties: | - |
| • Size: | W 1,600 x D 355 x H 27 mm |
| • Weight: | 6 kg |

Wall-mounting shelf 1600x355x27, SS

Add on Products

1 pair of adjusting bars, 530 mm



- Important information: -
- Size: W 55 x D 530 x H 10 mm
- Weight: 0.92 kg

Code-No. 600061
GTIN 4015613442815

Consoles 1 pair



- Important information: -
- Size: W 355 x D 35 x H 90 mm
- Weight: 0.85 kg

Code-No. 600601
GTIN 4015613442822

Stainl.steel polish.spray 500ml can



- Content / can: 500 ml
- Application: Remove heavy soiling such as grease residue first
Do not spray onto hot surfaces
- allow them to cool down first:

Code-No. 173031
GTIN 4015613360195

Oil and grease remover F1L



- Content: 6 x 1 litre
- Model: Liquid
- HACCP compliant: Yes
- Chlorine-free: Yes
- Phosphate-free: Yes
- Including: -
- Order quantity unit: 1 box (6 bottles)

Code-No. 173276
GTIN 4015613761176