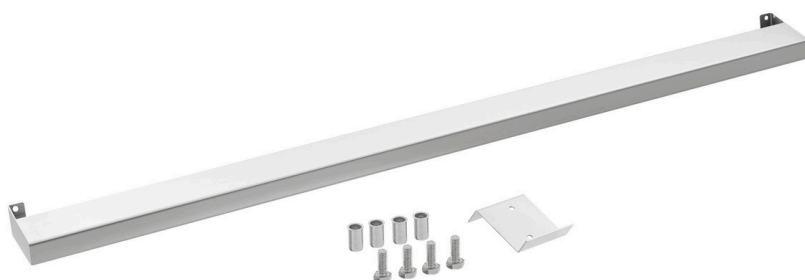


## Kitchen rail 900-1200



### Description

Fitting appliances in the 900 series with a kitchen rail gives them a stylish accessory as well as optimising safety and functionality. The placement of the rail further away from the appliance effectively reduces the risk of burns from high-temperature zones. In addition, the robust design allows for the convenient storage of pots, pans and plates while they're waiting to be used.

### Features

- Material: Stainless steel
- Load-bearing capacity max.: 15 kg
- Depth of surface: 60 mm
- Including: 1 drilling template  
Attachment material
- Important information: Building kit
- Size: W 1,190 x D 95 x H 40 mm
- Weight: 2.1 kg

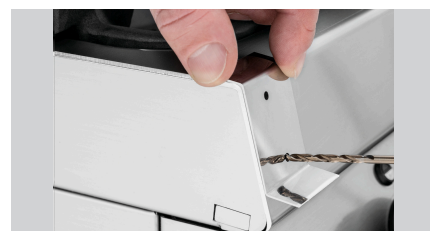


- ▶ Designed for:
  - ✓ Series 900 appliances, appliance width: 1200 mm

- ▶ Max. load-bearing capacity: 15 kg



- ▶ Depth of surface: 60 mm



- ▶ Including:
  - ✓ 1 drilling template
  - ✓ Fixation material