

Easy Black 250



190080

Bartscher GmbH
Franz-Kleine-Str. 28
D-33154 Salzkotten
Germany

Phone: +49 5258 971-0

Fax: +49 5258 971-120

Technical Support Hotline: +49 5258 971-197

www.bartscher.com



Version: 1.0

Date of preparation: 2021-03-18

Original instruction manual

1	Safety	2
1.1	Explanation of Signal Words.....	2
1.2	Safety instructions.....	3
1.3	Intended Use	6
1.4	Unintended Use	6
2	General information	7
2.1	Liability and Warranty	7
2.2	Copyright Protection	7
2.3	Declaration of Conformity	7
3	Transport, Packaging and Storage	8
3.1	Delivery Check.....	8
3.2	Packaging	8
3.3	Storage	8
4	Technical Data.....	9
4.1	Technical Specifications	9
4.2	List of Components of the Appliance	11
4.3	Functions of the Appliance.....	12
5	Installation and operation	13
5.1	Installation.....	13
5.2	Operation	14
6	Cleaning and Descaling.....	20
6.1	Safety Instructions for Cleaning	20
6.2	Cleaning.....	21
6.3	Descaling.....	24
7	Possible Malfunctions.....	26
8	Disposal.....	30



Read this instruction manual before using and keep it available at all times!

This instruction manual contains information about installation, operation and maintenance of the appliance and constitutes an important source of information and reference guide. The knowledge of all operational and safety instructions included in this manual is a prerequisite for safe and proper handling of the appliance. Additionally, accident prevention, occupational health and safety, and legal regulations in force in the area the appliance is used apply.

Before you start using the appliance, especially before turning it on, read this instruction manual in order to avoid personal injuries and property damages. Improper use may cause damage.

This instruction manual forms an integral part of the product and must be stored in an immediate vicinity of the appliance and be available at all times. The instruction manual should be transferred together with the appliance.

1 Safety

EN

This appliance has been manufactured in accordance with technical standards currently in force. However, the appliance may be a source of hazards if used improperly or contrary to its intended purpose. All persons using the appliance must consider information included in this instruction manual and observe safety instructions.

1.1 Explanation of Signal Words

Important safety instructions and warning information are indicated in this instruction manual with appropriate signal words. You must strictly follow the instructions, to prevent accidents, personal injuries and property damages.



DANGER!

The signal word **DANGER** warns against hazards that lead to severe injuries or death if the hazards are not avoided.



WARNING!

The signal word **WARNING** warns against hazards that may lead to moderate or severe injuries or death if the hazards are not avoided.



CAUTION!

The signal word **CAUTION** warns against hazards that may lead to light or moderate injuries if the hazards are not avoided.

IMPORTANT!

The signal word **IMPORTANT** indicates possible property damages, which may occur if safety instructions are not observed.

NOTE!

The symbol **NOTE** indicates subsequent information and guidelines for the user on usage of the appliance.

1.2 Safety instructions

Electrical Current

- Too high a mains voltage or incorrect installation may cause electric shock.
- The appliance may be connected only if data on the rating plate correspond with the mains voltage.
- To avoid short-circuit, the appliance should be kept dry.
- If there are malfunctions during operation, disconnect the appliance from the power supply.
- Do not touch the appliance's plug with wet hands.
- Never take hold of the appliance if it has fallen into water. Immediately disconnect the appliance from the power supply.
- Any repairs or housing opening may be carried out by professionals and relevant workshops only.
- Do not transport the appliance, holding it by the power cord.
- Do not allow the power cord to come into contact with heat sources or sharp edges.
- Do not bend, pinch nor knot the power cord.

- Always completely unwind the power cord.
- Never place the appliance or other objects on the power cord.
- Always take hold of the plug to disconnect the appliance from the power supply.

- Check the power cord regularly for damage. Do not use the appliance if the power cord is damaged. If this cable is damaged, it must be replaced by customer service or a qualified electrician in order to avoid dangers.

Flammable Materials

- Never subject the appliance to contact with high temperature sources, e.g.: oven, furnace, open flame, heat generating devices, etc.
- To avoid fire hazard, clean the appliance regularly.
- Do not cover the appliance with, e.g., aluminium foil or cloths.
- Use the appliance only with materials designated to this end and with correct temperature settings. Materials, groceries and left-overs remaining in the appliance may catch fire.
- Never use the appliance near flammable or inflammable materials, e.g.: petrol, spirit, alcohol, etc. High temperature triggers evaporation of these materials, and, as a result of contact with sources of ignition, an explosion may occur.
- In case of fire, disconnect the appliance from the power supply before attempting suitable fire-extinguishing actions.
- Never attempt to extinguish fire with water if the appliance is connected to the power supply. Following extinction of fire, ensure sufficient fresh air inflow.

Safety

Health hazard due to germs!

- The water tank must be regularly emptied and disinfected to eliminate the possibility of accumulation of harmful and dangerous germs.

Supervised Usage only

- Only supervised appliance may be used.
- Always remain in an immediate vicinity of the appliance.

Operating Personnel

- The appliance may only be operated by qualified personnel and trained specialist personnel.
- This appliance may not be operated by persons (including children) with limited physical, sensory or mental capabilities, nor by persons with limited experience and/or limited knowledge.
- Children should be supervised to ensure that they are not playing with or switching on the appliance.

Improper use

- Unintended or prohibited use may cause damage to the appliance.
- The appliance may only be used in a technically flawless condition, providing for safe use.
- The appliance may only be used with connections in a technically flawless condition, providing for safe use.
- The appliance may only be used clean.
- Use only original spare parts. Never attempt to repair the appliance on your own.
- Do not attempt to modify nor alter the appliance.

1.3 Intended Use

As described below, every use of the appliance for a purpose differing and/or diverging from its intended standard use, is prohibited and considered to be an unintended use.

The following is an intended use:

- Preparation of various types of coffee beverages, for example: coffee, cappuccino, espresso, etc.

1.4 Unintended Use

An unintended use may lead to personal injuries or property damages caused by hazardous voltage, fire or high temperature. The appliance may only be used to perform tasks described in this instruction manual.

2 General information

2.1 Liability and Warranty

All information and instructions in this instruction manual account for legal regulations in force, current level of technical engineering knowledge as well as our expertise and experience, developed over the years. If special models or additional options are ordered, or state-of-the-art technical solutions were implemented, the actual scope of delivery of the appliance may, in some circumstances, differ from descriptions and numerous drawings in this instruction manual.

The manufacturer is not liable for any damages nor faults stemming from:

- failure to observe instructions,
- unintended use,
- technical alterations introduced by the user,
- usage of unapproved spare parts.

We reserve the right to introduce technical modifications to the product, intended for improvement of the appliance and its performance.

2.2 Copyright Protection

This instruction manual, and texts, drawings and images included in it, as well as its other components are copyright protected. It is prohibited to reproduce this instruction manual (including its excerpts), in any form and by any means, and to use and/or transfer its content to third parties without manufacturer's written permission. Violation of the above results in obligation to pay compensation. We reserve the right to claim further damages.

EN

2.3 Declaration of Conformity

The appliance meets the currently applicable standards and guidelines of the European Union. We confirm the above in the EC Declaration of Conformity. We may provide relevant Declaration of Conformity upon request.

3 Transport, Packaging and Storage

3.1 Delivery Check

Immediately upon reception, check the delivery for completeness and possible shipping damage. In the case of visible transport damage refuse to accept the appliance or accept it conditionally. Mark and note the scope of damage in shipping documents/consignment list of the shipping company and lodge a complaint. Concealed damage must be reported immediately upon its discovery, as compensation claims may only be filed within applicable time limits.

If you find that parts or accessories missing, please contact our Customer Service Department.

3.2 Packaging

Do not dispose of the appliance cardboard box. It may be used to store the appliance when relocating or when shipping the appliance to our service point in the case of any damages.

The packaging and its elements are made of recyclable materials. Particularly, these are: plastic films and bags, cardboard box.

EN

When disposing of the packaging, observe applicable domestic regulations. Recyclable packaging materials should be recycled.

3.3 Storage

Leave the packaging closed until installation of the appliance; observe external indications concerning method of placing and storage. Store the packaging in the following conditions only:

- in closed rooms;
- in dry and dust-free surrounding;
- away from aggressive agents;
- in a location protected against sunlight;
- in a location protected against mechanical shocks.

In the case of extended storage (over three months), make sure you check the condition of the packaging and the parts regularly. If needed, replace the packaging with a new one.

4 Technical Data

4.1 Technical Specifications

Name:	Coffee machine Easy Black 250
Art. No.:	190080
Material:	Plastic
Grinder material:	Steel
Number of brewing unit groups:	1
Water tank volume, in l:	1,8
Coffee container volume, in g:	250
Programs:	4
Pump pressure, in bar:	19
Outlet, height regulation, from–to, in mm:	80 - 115
Dregs container volume, no. of cups, approx.:	15
Designed for cups/day:	80
Output: no. of cups of 120 ml/h, max.:	40
Minimum brewing volume, in ml:	25
Power supply:	1,4 kW 230 V 50/60 Hz
Dimensions (W x D x H), in mm:	305 x 470 x 365
Weight, in kg:	11,5

We reserve the right to implement technical modifications.

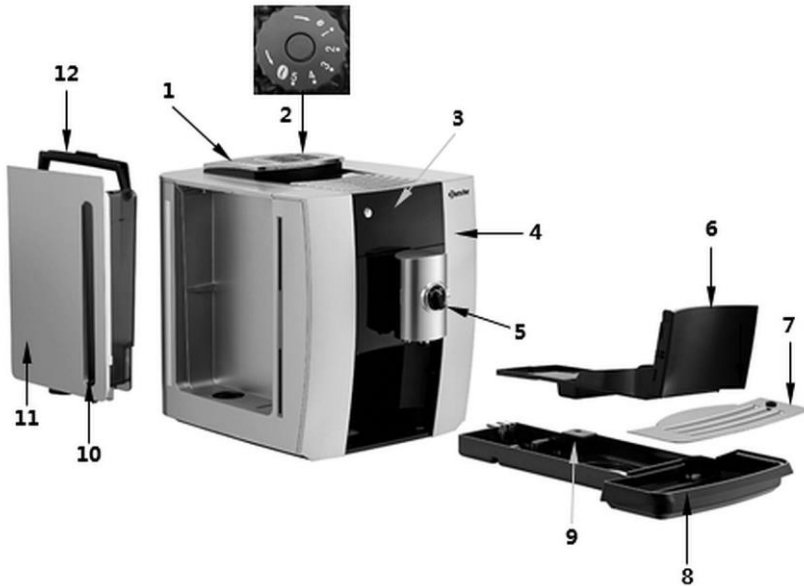
Version / Characteristics

- Fully automatic
- Control: electronic
- Settable parameters: grinding coarseness with 5-level scale, coffee dosing, amount of water, water temperature
- Programs: 4 programs, pre-programmed, parameters can be changed
- Display: programs, status, maintenance messages, error messages
- Automatic switch-off
- Grinder: conical burr grinder
- Pressure system: piston pressure
- Indicator light: ON/OFF
- Descaling signal
- Fill level indicator
- Detachable water tank
- ON/OFF switch
- Milk frother
- Cleaning program
- Dregs container is dishwasher safe
- 2 cups function
- Ground coffee options: per cups, manually, 7 g - 14 g
- Milk supply: external via a hose
- Features:
 - Cup counter (per program and total)
 - Hot milk or milk frothing selector switch

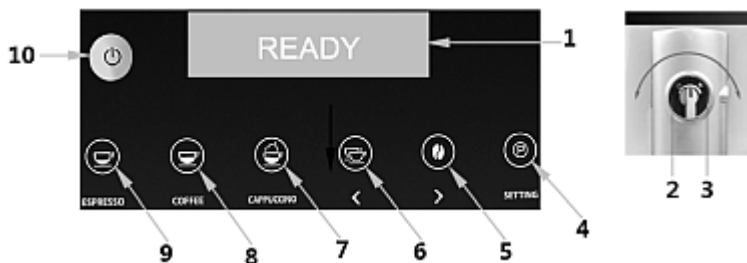
The set includes:

- 1 milk hose, 50 cm
- 1 coffee spoon

4.2 List of Components of the Appliance



- | | |
|--|--|
| 1. Coffee container with cover | 2. Grinding coarseness adjustment knob |
| 3. Control panel | 4. Housing |
| 5. Selector switch for milk/frothed milk | 6. Front cover |
| 7. Drip grid | 8. Drip tray |
| 9. Dregs container | 10. Water tank fill level indicator |
| 11. Water tank | 12. Water tank handle |



- | | |
|--|--|
| 1. Display messages | 2. Selector switch for frothed milk |
| 3. Selector switch for hot milk | 4. Selection button |
| 5. Coffee strength button / right arrow button | 6. Double cup button / left arrow button |
| 7. CAPPUCINO button | 8. COFFEE button |
| 9. ESPRESSO button | 10. ON/OFF button |

EN

4.3 Functions of the Appliance

The appliance is designed for preparing various coffee beverages, for example: coffee, espresso, cappuccino, or latte macchiato, with the use of coffee beans and cold water, and it is ideal for cafés, cafeterias and offices.

5 Installation and operation

5.1 Installation

Unpacking / Positioning

- Unpack the appliance, remove all external and internal packaging elements and shipment safeguards.



CAUTION!

Choking hazard!

Prevent children from accessing package materials, for instance: plastic bags and EPS.

- If the appliance is covered with a protective film, remove it. Remove the film slowly, so no glue residues are left. Remove any glue residues with the use of a suitable solvent.
- Be careful not to damage the rating plate and warning labels fixed on the appliance.
- **Never** place the appliance in humid or wet environment.
- Place the appliance in a way making the connections easily accessible, so that they may be quickly disconnected if such a need arises.
- The appliance should be placed on surfaces that are:
 - even, with sufficient bearing capacity, resistant to water, dry and resistant to high temperatures;
 - sufficiently large, and thus enabling usage of the appliance with no problems;
 - easily accessible;
 - well ventilated.
- Maintain sufficient clearance from table edges. The appliance might turn over and fall down.
- Mind the sufficient clearance from the walls and other flammable objects or objects that are prone to discolouration. This clearance must be at least 5 cm from the back and both sides, and 15 cm from the top. Note the fire safety provisions at the place of installation.
- When in operation, the appliance may not be installed in a cabinet.

Power supply connection

- Verify if technical data of the appliance (see rating plate) correspond with the local electric power grid specification.
- Connect the appliance to a single, properly grounded mains socket with protective contact. Do not connect the appliance to a multi-socket.
- The power cord should be laid in a way preventing anyone from threading on it or tripping against it.
- Do not use the appliance with an external timer or remote control.

5.2 Operation

Important indications

- Fill the water tank solely with fresh potable water.
- Never fill the water tank with warm/hot water, milk nor any other liquid.
- Never fill the coffee container (ground coffee container) any instant coffee, cocoa nor any other powder mixtures. The appliance might get damaged.
- Never fill the coffee container with specially prepared coffee beans (e.g. coated with cocoa or sugar), as this might cause damage to the appliance.
- The coffee container may be filled only with roasted coffee beans. Rice, soy beans, cocoa beans, nuts, sugar, spices, etc., are prohibited.
- Always store coffee beans in dry, shaded place. Humid beans may damage the grinder.
- Do not keep coffee beans in the coffee container if the appliance is not to be used for a longer period of time. Coffee beans may attract humidity and clog the grinder.

EN

Appliance Start-up

1. Plug the appliance into a suitable single socket.
2. Press the ON/OFF switch at the left side of the control panel to activate the appliance.

With first use, the coffee machine starts with heating-up and cleaning. This helps the appliance to achieve better working conditions. This process cannot be omitted.

NOTE! Risk of scalding!

During the cleaning process, hot water flows from the coffee outlet onto the drip tray.

Avoid contact with the outflowing hot water.

3. Prior the next setting, make sure the appliance is in the **'Ready'** mode.

Switching the Appliance Off

1. Press the ON/OFF switch at the left side of the control panel to deactivate the appliance.

After deactivation, the coffee machine starts the cleaning process. This helps the appliance to achieve better working conditions. This process cannot be omitted.

NOTE! Risk of scalding!

During the cleaning process, hot water flows from the coffee outlet onto the drip tray.

Avoid contact with the outflowing hot water.

Language Setting

1. If needed, set the language.
2. Press the selection button, to go to the menu.
3. Select language setting.
4. Press arrow keys until the desired language is shown.
5. Press the selection button to confirm the language.

EN

Automatic Switch-off

When 2 hours elapse, the appliance switches off automatically.

The time of automatic switch-off may be set in the range from 5 minutes to 10 hours.

1. Press the selection button, to go to the menu.
2. Select „Auto-Off“.
3. Using arrow keys set the selected time.

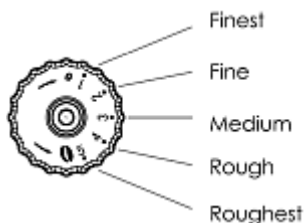
Grinding Coarseness Setting

1. The coarseness of the ground coffee must be adapted to the selected coffee beans.

NOTE: The grinding coarseness may only be set when the appliance is not preparing any beverages.

2. Open the grinder cover. It is found before the coffee container.

Use the adjustment knob to set the selected grinding coarseness from 'very fine' ('finest') to 'very coarse' ('roughest').



3. If during preparation the coffee flows very slowly or does not flow out completely, set the grinding coarseness to 4 or 5.
4. If the ground coffee is dark, we recommend the highest coarseness grinding setting.
5. If the ground coffee is light, we recommend the finest grinding setting.

The changes to the grinding coarseness will only be noticeable after 2 or more fresh cups of coffee are brewed.

EN

Coffee Preparation

1. Before starting to prepare coffee, set the selector knob to 'Frothed milk'.

READY

2. Press the coffee strength button, as soon as the display shows the 'Ready' message.

STRENGTH

3. Use the '<' or '>' button, and keep pressing it to change the coffee amount.

COFFEE

When the grinding process is finished, you cannot change the coffee amount.

COFFEE
< VOLUME 50ML >

4. Use the '<' or '>' button, and keep pressing it to change the coffee amount.



Installation and operation



5. Select the 'Double cup' button to stop the frothed milk.



6. Remove the cup, when the display shows the 'Enjoy' message.

Caffè Latte Preparation

1. Before starting to prepare coffee, set the selector knob to 'Frothed milk'.



2. Press the selection button, as soon as the display shows the 'Ready' message.



3. Press the coffee strength button, until the display shows the 'Caffè latte' message.



4. Press the selection button.
The coffee preparation is commenced.
When the grinding process is started, you cannot change the coffee amount.



The grinder starts to grind.

5. Use the '<' or '>' button, and keep pressing it to change the coffee amount.



When the grinding process is finished, you cannot change the coffee amount. The appliance starts to heat-up.



When heated up, the frothed milk is being prepared.

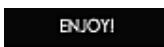
6. Use the '<' or '>' button, and keep pressing it to change the time of brewing.
7. Select the 'Double cup' button to stop the frothed milk.



When the frothed milk is ready, the subsequent preparation process takes approximately 20 seconds.



8. Use the '<' or '>' button, and keep pressing it to change the coffee amount.



9. Remove the cup, when the display shows the 'Enjoy' message.

Cappuccino Preparation

1. Before starting to prepare coffee, set the selector knob to 'Frothed milk'.



The 'Ready' message will be shown on the display.

2. Press the Cappuccino button.



The grinder starts to grind.

3. Use the '<' or '>' button, to select the coffee amount.



The appliance starts to heat-up.

When the grinding process is started, you cannot change the coffee amount.



When the heating up process is finished, the appliance starts milk frothing.

4. Adjust the amount of frothed milk with the '<' or '>' button.
5. Press the Cappuccino button to stop the frothed milk.



Installation and operation



6. Use the '<' or '>' button, and keep pressing it to set the coffee amount.

7. Press the Cappuccino button to stop the appliance.



The Cappuccino is ready.

8. Remove the cup.

Preparation of Double Beverages

The appliance may prepared a double coffee or a double espresso.



1. Press the double cup button, as soon as the display shows the 'Ready' message.



2. Select the beverage. You may select a coffee or an espresso.



3. Select the beverage strength.

The appliance is factory set to 'strong'.

Using the Milk Frother

The appliance may be used for preparing frothed milk or hot milk.

1. Connect firmly the milk hose with the milk frother and the milk container.



2. Select from amongst the frothed milk and hot milk, when the 'Ready' will be shown on the display.



3. The appliance starts to heat-up.

4. To stop the heating-up process, press the selection button.



5. Press the selection button to prepare the beverage.



6. During the process, you may control the amount of milk, using the '<' or '>' button.



7. When the 'Ready' is shown on the display, you may prepare the beverage.

Preparing Beverages with Ground Coffee Function

The coffee machine is equipped with a function that makes it possible to prepare coffee with the use of ground coffee.

NOTE:

To prepare coffee with the ground coffee function, the amount of the ground coffee used must be 7–14 g. Additionally, the coffee must be coarsely ground to avoid clogging of the brewing unit.

1. Do not let the ground coffee container to come into contact with water.

A black rectangular button with the word "READY" in white capital letters.

2. Press the selection button, as soon as the display shows the 'Ready' message, to go to the menu.

A black rectangular button with the word "CLEAN" in white capital letters, flanked by left and right arrow symbols.

3. Select the function with the use of the '<' or '>' button.

A black rectangular button with the text "<USE POWDER>" in white capital letters.

4. Press the coffee strength button, when the 'Use powder' is shown on the display, to confirm the selection.

A black rectangular button with the text "FILL POWDER" on the top line and "SELECT BEVERAGE" on the bottom line, both in white capital letters.

5. Open the grinder cover.
6. Add ground coffee.
7. Select the beverage (e.g.: Espresso, Americano, etc.).

EN

6 Cleaning and Descaling

6.1 Safety Instructions for Cleaning

- Before cleaning, disconnect the appliance from the power supply.
- Leave the appliance to cool down completely.
- Make sure water does not enter the appliance. Do not immerse the appliance in water or other liquids during cleaning. Do not clean the appliance with a pressurized water jet.
- Do not use any sharp or pointed, nor metal implements (knife, fork, etc.). Sharp or pointed implements may damage the appliance, and when in contact with live parts, they may cause electric shock.
- For cleaning, do not use any scouring agents that contain solvents nor corrosive cleaning agents. They may damage the surface.

6.2 Cleaning

1. Wipe the housing of the appliance with a soft, moist cloth, and dry at the end.
2. Execute the brewing process as described in section **'Coffee Preparation'**; do not use coffee if the appliance has not been used for a longer period of time.

Cleaning the brewing unit

- After a longer period of use some ground coffee will build up in the brewing unit.
- Clean the brewing unit thoroughly to remove the ground coffee.
- When the brewing unit is excessively contaminated, the display shows message "Clean the brewing unit".
- That message is only a reminder as all functions of the machine are still available.
- The cleaning process of the brewing unit takes approx. 10 minutes.

NEED BREW CLEAN

When the brewing unit is excessively contaminated, the display shows message "Clean the brewing unit".

READY

1. Press the settings key to go to cleaning of the brewing unit.

< MENU >

2. Press the settings key to go to the menu.

< MAINTENANCE >

3. Use "<" and ">" keys to select "Maintenance".
4. Press the settings key to confirm selection.

< BREW CLEAN >

5. Use "<" and ">" keys to select "Cleaning the brewing unit".

BREW CLEAN
< CONFIRM >

Confirm selection.

PRESS SETTING

6. Confirm selection by pressing the settings key.

CLEANING

The brewing unit is cleaned.

ADD TABLET
PRESS SETTING

7. Open the ground coffee container.
8. Put the cleaning tablet inside.
9. Close the ground coffee container.

10. Select “Cleaning” option in the menu.



The brewing unit is cleaned.



After cleaning the “Ready” message appears on the display.

Cleaning the Dregs Container and Drip Tray



After preparation of 15 cups of beverages, the display will show the 'Empty tray' message.



1. When you remove the dregs container and the drip tray, you may empty and clean both containers.
2. Clean them with warm water and gentle washing agent.



When both containers are re-installed, the 'Ready' message will be shown on the display.

EN



When the dregs container is full, the display will show the 'Empty tray' message.



When the dregs container is reinstalled, the 'Ready' message will be shown on the display.

Cleaning the Milk System

1. Clean the milk system after each use.
2. To clean the milk system, use a commercially available agent for cleaning milk systems.
3. Connect firmly the milk hose with the milk frother and the container with cleaning agent for milk systems.



4. Select from amongst the frothed milk and hot milk, when the 'Ready' will be shown on the display.



The appliance starts to heat-up.



5. To stop the cleaning process, press the selection button.
6. Press the selection button to start the cleaning.



7. During the process, you may control the amount of cleaning agent for milk systems, using the '<' or '>' button.

Cleaning and Descaling

READY

When the 'Ready' is shown on the display, the cleaning process is finished.

8. Repeat the process described above.
9. Use water instead of the cleaning agent for milk systems to remove the remains of the cleaning agent.

Cleaning the Water Tank

1. Remove the water tank.
2. Wash the water tank thoroughly each time it is filled with water.
3. Then, fill the water tank with fresh potable water and reinstall it in the appliance.
4. The water tank should always be removed very carefully; never let it fall. Should the water tank get damaged, it must be replaced immediately.



EN

Cleaning the Coffee Container

1. Remove the coffee container cover carefully.
2. Always clean the coffee container with a dry cloth or a paper towel.
3. Replace the cover.
4. Never let the cover fall from the coffee container. Should the cover get damaged, it must be replaced.

6.3 Descaling

In the course of daily use of the appliance, depending on the local water hardness, limescale may build up inside the appliance components. In order to maintain the appliance in top condition, and in order to be certain that every brewing process yields the best results, the appliance should be descaled from time to time.

1. Use only appropriate tablets for coffee machines for cleaning and descaling.
2. During descaling, always strictly observe manufacturer's indications concerning safety, found on the package of the agent.

WARNING!

If, accidentally, the descaling agent comes into contact with eyes or skin, rinse them immediately with fresh water.

3. Always execute the descaling process in full; interrupting it may cause damage to the appliance.

EN

NEED DESCALE

The display will show alternating messages: 'Need descale' and 'Ready'.

READY

1. Press the selection button, to go to the menu.

< MENU >

2. Press the '<' or '>' button, to go to the system settings program.

< MAINTENANCE >

3. Press the '<' or '>' button, to select the 'Maintenance' option.
4. Confirm the selection with the selection button.

< DESCALE >

5. Press the selection button and select the 'Descale' option.

DESCALE
< CONFIRM >

6. Confirm the setting with the selection button.

30 MINS
PRESS SETTING

Descaling starts and lasts for approximately 30 minutes.

Cleaning and Descaling

SOLVENT IN TANK
PRESS SETTING

7. Prepare a solution of the descaling agent and fresh water.
8. Follow the manufacturer's instructions.
9. Remove the water tank.
10. Fill the water tank with the solution.



DECALCIFYING

Re-insert the water tank.

11. Place a sufficiently large container under the coffee outlet.



CLEAN WATER TANK
FILL WATER TANK

12. When the first cleaning phase is finished, remove the water tank again.

13. Empty it and fill with fresh water.

PRESS SETTING

14. Re-insert the water tank.

15. Press the selection button to start the second phase of descaling.

DECALCIFYING

16. Place a sufficiently large container under the coffee outlet.

READY

When the 'Ready' is shown on the display, the descaling process is finished.

7 Possible Malfunctions

The table below contains descriptions of possible causes and solutions to malfunctions or errors during operation of the appliance. When malfunction cannot be removed, contact the technical service.

Problem	Cause	Solution
Coffee is too cold	Cup is too cold.	Rinse the cup with hot water before use.
	Much time elapsed since last used. The brewing unit is too cold.	Prepare subsequent cups.
The coffee flows from the coffee outlet in drops	The coffee was ground too finely or the ground coffee is too fine.	Select a coarser grinding level or use a coarsely ground coffee.
	Brewing unit filter clogged.	Clean the brewing unit, as described in section 6 'Cleaning'.
Not enough coffee oil content in coffee grains	Improper coffee grains are being used.	Use proper coffee grains.
The appliance is grinding coffee beans very loudly	There are foreign objects in the grinder.	Contact the service company.

Possible Malfunctions

Problem	Cause	Solution
The 'Fills the tank with water' message is shown on the display, although the water tank is full	The water tank inductor is covered.	Clean the water tank, as described in section 6 'Cleaning'.
The 'Insert the water tank' message is shown on the display, although the water tank is inserted	There are still dregs of coffee in the coffee machine	Clean the appliance
The 'Fill with coffee beans' message is shown on the display, although the coffee container is full	In the coffee container there is too high a humidity and the container is sticky.	Stir the coffee beans in the container.
		Check if the coffee beans are not roasted too excessively or if they were roasted with charcoal.
		Clean the coffee container, as described in section 6 'Cleaning'.
The 'Error' message is shown on the display	The appliance cannot start any more.	Contact the service company.

Possible Error Messages on the Display

Display Message	Cause	Solution
Empty the drip tray	The drip tray is full, and the beverage preparation functions are not operating.	Remove the drip tray, empty it and reinstall it in the appliance.
Empty the dregs container	The dregs container is full, and the beverage preparation functions are not operating.	Remove the dregs container, empty it and reinstall it in the appliance.
Fill the water tank	The water tank is empty, and the beverage preparation functions are not operating.	Fill the tank with fresh potable water.
Fill with coffee beans	The coffee container is empty, and the beverage preparation functions are not operating.	Fill the coffee container with coffee beans.
Too little of ground coffee	There is not enough of ground coffee in the container.	Fill with ground coffee, and press the 'Release' button.
Install the drip tray	The drip tray is removed, and the beverage preparation functions are not operating.	Install the drip tray in the appliance correctly.

Possible Malfunctions

Display Message	Cause	Solution
System is empty	Not enough water in the appliance water supply hose, and the beverage preparation functions are not operating.	To confirm, press the selection button.
High temperature	Temperature in the appliance is too high.	Disconnect the appliance from the power supply and wait for it to cool down. Next, restart the appliance.
Temperature is too low	The ambient temperature in installation location is too low.	Keep the ambient temperature of at least 10°C.
High pressure	The used coffee beans are too dark or the coffee is ground too finely.	Set the coarser grinding level of 4–5 or use a coarsely ground coffee.
	Brewing unit filter clogged.	Run the cleaning program for the brewing unit.
Brewing unit error	Internal component error.	Restart the appliance.

8 Disposal

Electrical Appliance



Electric appliances are marked with this symbol. Electrical appliances must be disposed of and recycled in a correct and environmentally friendly manner. You must not dispose of electric appliances with household waste. Disconnect the appliance from the power supply and remove power cord from the appliance.

Electrical appliances should be returned to designated collection points.