

## Pasta machine 5000



### Description

Homemade pasta with perfectly kneaded pasta dough. This pasta machine easily and simply produces dough and then makes it into pasta. The optional pasta moulds allow you to make a diverse range of pasta including cannelloni, fusilli and spaghetti.

### Features

- |                          |   |
|--------------------------|---|
| • Material:              | Stainless steel   |
| • Storage capacity:      | 1,5 kg  |
| • Important information: | Cap is required to close the ejected material during dough production |
| • Production max.:       | 5 kg / h  |
| • Functions:             | Dough production<br>Pasta production                                  |
| • Safety switch:         | Yes   |
| • ON/OFF switch:         | Yes   |
| • Control lamp:          | ON/OFF<br>Dough output<br>Kneading<br>Dough container                 |
| • Dishwasher-suitable:   |   |

▶ Continue on the next page

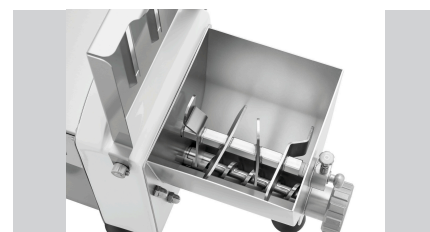


- ▶ Easy production of all kinds of pasta
  - ✓ 1. step: Dough production
  - ✓ 2. step: Dough output

- ▶ Max. production: 5 kg/hour
- ▶ Capacity: 1.5 kg



- ▶ Lid with 2 filling openings
  - ✓ 8 x 112 mm



- ▶ Easy to clean
  - ✓ Easy removal of kneading shaft and transport screw
  - ✓ Removable dough container, dishwasher-safe

[ERROR READING XHTML FRAGMENT]



- ▶ 5 stable feet

## Pasta machine 5000

- Properties:
  - Kneading shaft and transport screw can be removed
  - Lid with 2 filling openings (8 x 112 mm)
  - 5 stable feet
  - Low noise (< 70 dB)
  - Dough container can be removed
  - For kneading and rolling out 12 different types of pasta (pasta moulds available as optional extras)
- Including:
  - Assembly tool
  - Pasta moulds
  - Closing cap
- Not included in delivery:
- Power load: 0,25 kW | 230 V | 50 Hz
- Size: W 240 x D 510 x H 318 mm
- Weight: 16.1 kg



## Pasta machine 5000 Add on Products

### Sealing cap



- Important information: Cap is required to close the ejected material during dough production
- Material: Bronze
- Size: W 55 x D 55 x H 10 mm
- Weight: 0.18 kg

Code-No. 101986  
GTIN 4015613584997

### Pasta mould Caserecce 9x5 mm



- Pasta size: 9 x 5 mm
- Pasta type: Caserecce
- Important information: -
- Material: Bronze
- Size: W 55 x D 55 x H 10 mm
- Weight: 0.14 kg

Code-No. 101972  
GTIN 4015613584850

### Pasta mould Fusilli 9 mm



- Pasta size: Ø 9 mm
- Pasta type: Fusilli
- Important information: -
- Material: Bronze
- Size: W 55 x D 55 x H 10 mm
- Weight: 0.14 kg

Code-No. 101973  
GTIN 4015613584867

### Pasta mould Pappadelle 16 mm



- Pasta size: 16 mm
- Pasta type: Pappardelle
- Important information: -
- Material: Bronze
- Size: W 55 x D 55 x H 10 mm
- Weight: 0.16 kg

Code-No. 101974  
GTIN 4015613584874

## Pasta machine 5000

### Add on Products

#### Pasta mould Gnocchi 12 mm



- Pasta size: Ø 12 mm
- Pasta type: Gnocchi
- Important information: Not suitable for potatoes
- Material: Bronze
- Size: W 55 x D 55 x H 10 mm
- Weight: 0.17 kg

Code-No. 101975  
GTIN 4015613584881

#### Pasta mould Capelli d'Angelo 1 mm



- Pasta size: Ø 1 mm
- Pasta type: Capelli d'angelo
- Important information: -
- Material: Bronze
- Size: W 55 x D 55 x H 10 mm
- Weight: 0.16 kg

Code-No. 101978  
GTIN 4015613584911

#### Pasta mould Spaghetti 2 mm



- Pasta size: Ø 2 mm
- Pasta type: Spaghetti
- Important information: -
- Material: Bronze
- Size: W 55 x D 55 x H 10 mm
- Weight: 0.16 kg

Code-No. 101979  
GTIN 4015613584928

#### Pasta mould Spaghetti 2x2 mm



- Pasta size: 2 x 2 mm
- Pasta type: Spaghetti alla chitarra
- Important information: -
- Material: Bronze
- Size: W 55 x D 55 x H 10 mm
- Weight: 0.17 kg

Code-No. 101980  
GTIN 4015613584935

## Pasta machine 5000

### Add on Products

#### Pasta mould Sfoglia 135 mm



- Pasta size: 135 mm
- Pasta type: Pasta sfoglia
- Important information: -
- Material: Bronze
- Size: W 55 x D 55 x H 40 mm
- Weight: 0.4 kg

Code-No. 101983  
GTIN 4015613584966

#### Pasta mould Cannellone 25 mm



- Pasta size: Ø 25 mm
- Pasta type: Cannelloni
- Important information: -
- Material: Bronze
- Size: W 55 x D 55 x H 10 mm
- Weight: 0.15 kg

Code-No. 101984  
GTIN 4015613584973

#### Pasta mould Bigoli 3 mm



- Pasta size: Ø 3 mm
- Pasta type: Bigoli
- Important information: -
- Material: Bronze
- Size: W 55 x D 55 x H 10 mm
- Weight: 0.16 kg

Code-No. 101985  
GTIN 4015613584980

#### Pasta mould Fettuccine 8 mm



- Pasta size: 8 mm
- Pasta type: Fettuccine
- Material: Bronze
- Important information: -
- Size: W 55 x D 55 x H 10 mm
- Weight: 0.15 kg

Code-No. 101988  
GTIN 4015613761527

## Pasta machine 5000 Add on Products

### Pasta mould Tagliolini 3 mm



- Pasta size: 3 mm
- Pasta type: Tagliolini
- Material: Bronze
- Important information: -
- Size: W 55 x D 55 x H 10 mm
- Weight: 0.15 kg

Code-No. 101989  
GTIN 4015613761534