

Deck oven CL6080-1



Description

Baked goods from a traditional bakestone made of fireclay with separately adjustable upper and lower heat. The deck oven has an impressively low temperature loss even with steaming. External steam generation and firebrick ensure an almost constant temperature in the baking chamber.

Features

- Material baking chamber: Refractory clay baking stone
Stainless steel
- Number of baking chambers: 1
- Shelf height: 140 mm
- Temperature range to: 300 °C
- Temperature control: In 1 °C steps
- Heating type: Upper / lower heat
- Upper / lower heat can be controlled separately: Yes
- Steam generators: External steam-box
- Steam-box power: 1,5 kW
- Steaming: Set in the program
Manual
- Number of programs: 15 pre-installed programs
84 programmable
manually adjustable program
- Number of baking phases: 6
- Parameters per baking phase: Baking time

▶ Continue on the next page

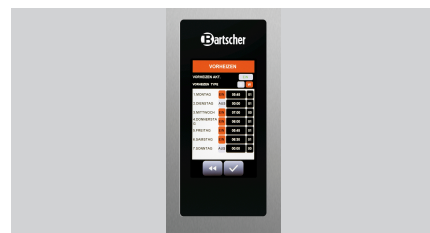


- ▶ 1 baking chamber
- Capacity: 1 x 600 x 800 mm or 2 x 600 x 400 mm

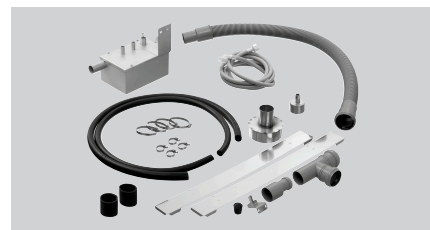


- ▶ 99 programs
- ▶ 6 baking phases
- ▶ 5 parameters

- ▶ Steam generator: External steam box



- ▶ Automatic switch-on via timer



- ▶ Required for appliance operation
 - ✓ Installation kit LBO100
- ▶ The appropriate installation kit must be selected for the combined appliance setup.
- ▶ Upstream connection of a water softener is always required.
- ▶ A pressure reducer is required from a water pressure of 3.5 bar.

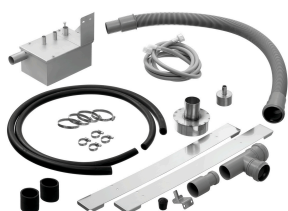
Deck oven CL6080-1

- Parameters per baking phase:
 - Steaming intensity
 - Top and bottom heat
 - Vapour extractor
 - Pre-heating
- Time setting:
 - 1 to 99 minutes
 - Manual baking time extension
- Automatic switch-on via timer: Yes
- Automatic pre-heating: Yes
- Automatic cooling: No
- USB connection: Yes
- Water connection: R3/4"
- Water intake temperature: 10 °C to 40 °C
- Interior lighting: LED
- Control unit: Touch
- Display:
 - Date and time
 - LCD, 7 inches
 - Programs
 - Timer settings
- Series: CL
- Equipment connection: 3 NAC
- Properties:
 - Programs from other devices can be imported
 - Programs with all parameters can be copied within the menu
- Including: -
- Power load: 6,5 kW | 400 V | 50/60 Hz
- Material: Stainless steel
- Important information:
 - A pressure reducer is required from a water pressure of 3,5 bar
 - Upstream connection of a water softener is always required
 - The LBO100 installation kit is required for individual device operation (the corresponding installation kit must be selected for the combined device configuration)
- Estimated delivery time from our warehouse in Salzkotten, Germany is week: 31 / 2022
- Capacity:
 - 1 x 600 x 800 mm
 - 2 x 600 x 400 mm
- Heating output: 4,8 kW
- Oven dimensions: W 680 x D 840 x H 160 mm
- Size: W 980 x D 1,330 x H 400 mm
- Weight: 131 kg



Deck oven CL6080-1 Add on Products

Installation kit LBO100



- Important information: -
- Material:
 - Stainless steel
 - Rubber
 - Plastic
- Set comprises:
 - Condensate collection box
 - Condensate hoses
 - Installation materials

Code-No. 117948
GTIN 4015613805139

Oven gloves 300



- Colour: Black
- Can be washed: No
- Heat resistant to: 250 °C
- Length: 300 mm
- Properties:
 - With flame protection
 - With hanger
 - Fabric density: 640 g/m²

Code-No. A500510
GTIN 4015613735467

Oven gloves 370



- Properties:
 - With flame protection
 - With hanger
 - Fabric density: 640 g/m²
- Colour: Black
- Can be washed: No
- Heat resistant to: 250 °C
- Length: 370 mm

Code-No. A500511
GTIN 4015613735474

Oven gloves 420



- Properties:
 - With flame protection
 - With hanger
 - Fabric density: 640 g/m²
- Colour: Black
- Can be washed: No
- Heat resistant to: 250 °C
- Length: 420 mm

Code-No. A500512
GTIN 4015613735481

Deck oven CL6080-1 Add on Products

Oven gloves 600



- Properties: With flame protection
With hanger
Fabric density: 640 g/m²
- Colour: Black
- Can be washed: No
- Heat resistant to: 250 °C
- Length: 600 mm

Code-No. A500513
GTIN 4015613735498

Power cleaner F1L, set of 2



- Designed for: Stubborn dirt, especially in kitchens
Grill and combi steamer cleaning (without cleaning system)
- Content: 2 x 1 litre
- Model: Liquid
High concentrate
- Ph level: 13,5

Code-No. 173078
GTIN 4015613731926

Intensive power cleaner F1L



- Order quantity unit: 1 box (6 bottles)
- Content: 6 x 1 litre
- Model: Liquid
- HACCP compliant: Yes
- Chlorine-free: Yes
- Phosphate-free: Yes
- Designed for: Use in kitchens and food processing areas

Code-No. 173280
GTIN 4015613761183

Stainl.steel polish.spray 500ml can



- Content / can: 500 ml
- Application: Remove heavy soiling such as grease residue first
Do not spray onto hot surfaces
- allow them to cool down first:
- Application: Before use, bring the can to room temperature and shake well

Code-No. 173031
GTIN 4015613360195

Deck oven CL6080-1 Add on Products

Base frame CL6040-12

STAINLESS
STEEL

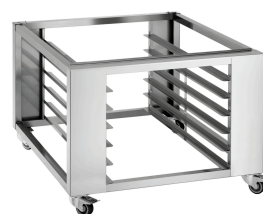


- Format drawers: 600 x 400 mm
- Number of drawers: 6, 2 trays each
- Type of drawers: Crosswise
- Swivel casters: 2 casters, 2 swivel casters with brakes
- Diameter casters: 100 mm
- Height-adjustable feet: No
- Base shelf: No

Code-No. 117933
GTIN 4015613770031

Base frame CL6040-10

STAINLESS
STEEL



- Format drawers: 600 x 400 mm
- Number of drawers: 5, 2 trays each
- Type of drawers: Crosswise
- Swivel casters: 2 casters, 2 swivel casters with brakes
- Diameter casters: 80 mm
- Base shelf: No
- Height-adjustable feet: No

Code-No. 117934
GTIN 4015613796437

Condensation hood LBO800



STAINLESS
STEEL



- Number of fan motors: 2
- Flame protection filter: No
- Number of filters: 0
- Material filter: -
- ON/OFF switch: No
- Important information: -
- Assembly type: Top of appliance

Code-No. 117940
GTIN 4015613769974

Partial desalination system TKD 13400 FB



- Desalination type: Partial desalination
- Water connection: 3/4"
- Material: Plastic
Glass-fibre reinforced
- Sampling tap: Yes
- Colour: Blue
- Important information: -

Code-No. 109878
GTIN 4015613681597