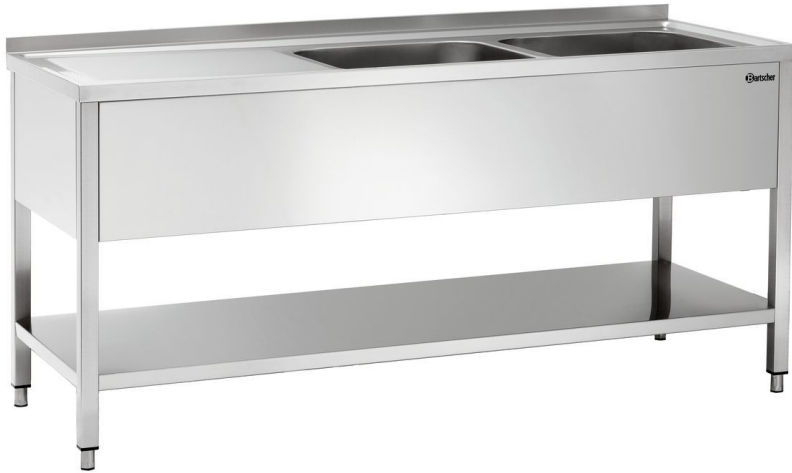


## Sink centre, 700, W1800, 2 basins R



### Description

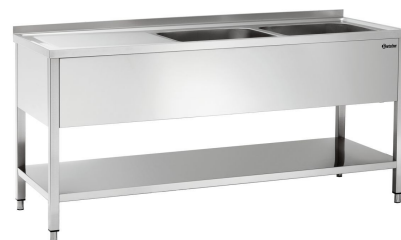
### Features

- Number of tanks: 2
- Material: Stainless steel
- Size basin: W 500 x D 500 x H 250 mm
- Important information: -
- Beaker capacity: 62 litre(s)
- Draining board: Left
- Tilting: 40 mm
- Splash protection: No
- Sink tap: None
- Water outlet: 1 1/2"
- Series: -
- Type: Upright unit
- Properties: 40 mm edges turned down  
Feet in square tubing 40 x 40 mm  
Scotch-Brite sanding
- Available on request: Model with a construction depth of 600 mm
- Including: -

▶ Continue on the next page

## Sink centre, 700, W1800, 2 basins R

- Height-adjustable feet: Yes
- Height adjustable: 850 mm to 900 mm
- Base shelf: Yes
- Size: W 1,800 x D 700 x H 850 mm
- Weight: 54 kg



## Sink centre, 700, W1800, 2 basins R

### Add on Products

#### Power cleaner F1L, set of 2



- Designed for: Stubborn dirt, especially in kitchens  
Grill and combi steamer cleaning (without cleaning system)
- Content: 2 x 1 litre
- Model: Liquid  
High concentrate
- Ph level: 13,5

Code-No. 173078  
GTIN 4015613731926

#### Standpipe 44/247



- Material: Stainless steel
- Important information: -
- Size: W 44 x D 44 x H 247 mm
- Weight: 0.24 kg

Code-No. 306552  
GTIN 4015613721354