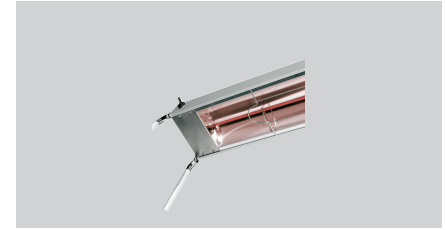


Food warmer IHR1250



► Thermal bridge width: 1370 mm



Description

Infrared thermal bridge - variable, as stand-alone unit or suspended to ceiling

Features

- | | |
|-----------------------------|--|
| • Not included in delivery: | Feet, chain |
| • Power load: | 1,25 kW 230 V 50/60 Hz |
| • Height-adjustable feet: | No |
| • Control lamp: | - |
| • Germ guard: | No |
| • Delivery state: | Permanently mounted |
| • Heat source type: | Infrared heated tube(s) |
| • Properties: | Prepared for the assembly of feet or a chain |
| • Design: | Can be mounted |
| • Including: | - |
| • Important information: | - |
| • Number of heated tubes: | 1 |
| • Output per heated tube: | 1,25 kW |
| • ON/OFF switch: | Yes |
| • Material: | Aluminium
Stainless steel |
| • Clear height: | 360 mm |

► Continue on the next page



Food warmer IHR1250

- Size: W 1,370 x D 225 x H 65 mm
- Weight: 4.3 kg



Food warmer IHR1250 Add on Products

Food warmer feet, pair



- Important information: -
- Size: W 270 x D 25 x H 425 mm
- Weight: 0.72 kg

Code-No. 114000
GTIN 4015613452258