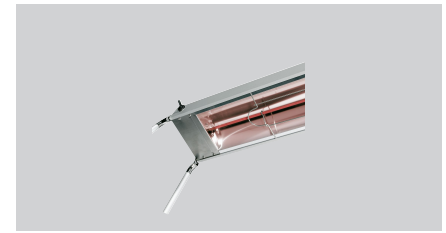


## Food warmer IHR800



► Thermal bridge width: 920 mm



### Description

Infrared thermal bridge - variable, as stand-alone unit or suspended to ceiling

### Features

• Not included in delivery:	Feet, chain
• Power load:	0,8 kW   230 V   50/60 Hz
• Height-adjustable feet:	No
• Control lamp:	-
• Germ guard:	No
• Delivery state:	Permanently mounted
• Heat source type:	Infrared heated tube(s)
• Properties:	Prepared for the assembly of feet or a chain
• Design:	Can be mounted
• Including:	-
• Important information:	-
• Number of heated tubes:	1
• Output per heated tube:	0,8 kW
• ON/OFF switch:	Yes
• Clear height:	360 mm
• Material:	Aluminium Stainless steel

► Continue on the next page



## Food warmer IHR800

- Size: W 920 x D 225 x H 65 mm
- Weight: 3.3 kg



## Food warmer IHR800 Add on Products

### Food warmer feet, pair



- Important information: -
- Size: W 270 x D 25 x H 425 mm
- Weight: 0.72 kg

Code-No. 114000  
GTIN 4015613452258