

Chafing dish 6.2L Flexible



Description

Induction or glass ceramic: This round chafing dish can be used flexibly on a built-in hob – in buffets, at canteens and in front cooking areas. The removable lid with soft-close mechanism means that it's really easy to take food out and to replace the container.

Features

• GN-capable:	No
• Content:	6,2
• Heating type:	External, via level induction or glass ceramic installed hob
• Stackable:	No
• Colour:	Silver
• Material handle(s):	Stainless steel Chrome-plated
• Functions:	Keeping warm
• Material:	Stainless steel
• Important information:	An external hob is required to use the device
• With handle(s):	Yes
• Diameter inner container:	390
• Lid properties:	With window Soft-Close mechanism (hydraulic lid hinge) Detachable, with handle
• Properties:	Heat control via external hob Lift-up device for containers

▶ Continue on the next page



- ▶ Infinite possibilities
 - ✓ The chafing dish can be used in combination with an external hob.
 - ✓ Volume: 6.2 litres
 - ✓ 1 container, Ø 390 mm, 65 mm deep



- ▶ For an induction or glass ceramic hob
 - ✓ Possible heat control via the external built-in hob



- ▶ Soft-close mechanism
 - ✓ Removable lid with window



- ▶ Lift-up device
 - ✓ Easy removal of container

Chafing dish 6.2L Flexible

- Material lid: Stainless steel
Chrome-plated
Glass
- Including: 1 container, Ø 390 mm, 65 mm deep, Stainless steel
- Size: W 435 x D 490 x H 205 mm
- Weight: 5.36 kg



Chafing dish 6.2L Flexible Add on Products

Induction warming plate IW10



- Power load: 1 kW | 230 V | 50 Hz
- Equipment connection: Pluggable
- Temperature range: 50 °C to 100 °C
- Control unit: Toggle
- Control lamp: -
- Overheating protection: Yes
- Timer: No

Code-No. 114366
GTIN 4015613714806

Induction warming plate IW10-EBBF



- Warming station diameter: 280
- Power load: 1 kW | 230 V | 50 Hz
- Equipment connection: Pluggable
- Temperature range: 50 °C to 100 °C
- Control unit: Electronic
- Control lamp: Operational

Code-No. 105996
GTIN 4015613715421

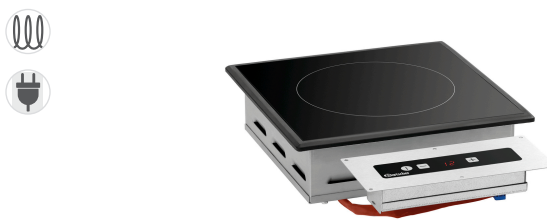
Induction warming plate IW3



- Power load: 0,3 kW | 230 V | 50-60 Hz
- Equipment connection: Pluggable
- Temperature range: 40 °C to 95 °C
- Control unit: Electronic
- Control lamp: Touch
- Control lamp: -
- Size ceramic surface: W 390 x D 390 mm

Code-No. 105865
GTIN 4015613746838

Induction warming plate IW3-EBBF



- Warming station diameter: 195
- Power load: 0,3 kW | 230 V | 50 Hz
- Equipment connection: Pluggable
- Temperature range: 40 °C to 95 °C
- Control lamp: -
- Size ceramic surface: W 280 x D 280 mm
- Overheating protection: Yes

Code-No. 105864
GTIN 4015613746821

Chafing dish 6.2L Flexible Add on Products

Induction warming plate IW3-SW



- Power load: 0,3 kW | 230 V | 50-60 Hz
- Material: Steel
- Important information: -
- Equipment connection: Pluggable
- Temperature range: 40 °C to 95 °C
- Control unit: Electronic
Touch

Code-No. 105867
GTIN 4015613773117