

Popcorn machine V150



Description

This vintage-style popcorn machine has an appealing appearance. The aroma of fresh popcorn simply invites customers to enjoy a crispy snack. The power and volume of this appliance are intended for professional use – for popcorn at funfairs, the cinema and at events. It's impressively easy to use and clean.

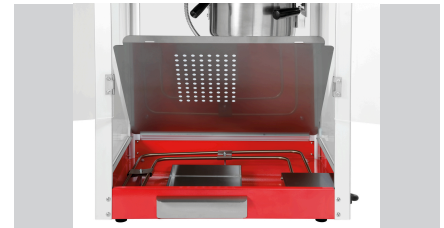
Features

- Material: Glass
Plexiglas
Aluminium
- Swivelling pot: Yes
- Material: Painted
- Important information: -
- Pot material: Non-stick coating on inside
Stainless steel on the outside
- Max. filling quantity of pot: 227 g of popcorn kernels
- Removable pot: Yes
- Control of pot: Heating and agitator can be turned on/off using rocker switch
- Output / hour max.: 1,5 kg
- Production time/cycle: 300 sec.
- Dimensions of popcorn chamber: W 485 x D 390 x H 505 mm
- Design of popcorn chamber floor: Stainless steel
Can be removed
- Heatable popcorn chamber: Floor (rocker switch)

▶ Continue on the next page



- ▶ Powerful
 - ✓ 1.5 kg / hour
 - ✓ Production time / cycle: 300 seconds



- ▶ Always warm and crispy
 - ✓ Heated chamber floor



- ▶ Practical
 - ✓ Popcorn dispensing flap on operator side



- ▶ Draws attention to your popcorn
 - ✓ Interior lighting



Popcorn machine V150

- Popcorn removal flap: Operator side
- Temperature range to: 200 °C
- Interior lighting: Yes
- Type of door: Door with magnetic lock
- Crumb drawer(s): Double-leaf
- Crumb drawer(s): 1
- Safety thermostat: Can be removed
- Control unit: Yes
- Including: Rocket switch
- Power load: 1 popcorn scoop
- Size: 1,5 kW | 230 V | 50-60 Hz
- Weight: W 518 x D 418 x H 672 mm
- Weight: 18.6 kg

