

Griddle plate 700, W400 smooth



Description

Features

• Sub-counter unit type:	Open
• Type:	Upright unit
• Material:	CNS 18/10
• Operating mode:	Electro
• Important information:	-
• Material roasting surface:	Stainless steel
• Roasting surface design:	Smooth
• Size heating surface:	W 320 x D 445 mm
• Height-adjustable feet:	Yes
• Height adjustable:	850 mm to 900 mm
• Number of heating zones:	1
• Safety thermostat:	Yes
• Series:	700
• Including:	-
• Power load:	5 kW 400 V 50/60 Hz
• Equipment connection:	3 NAC

► Continue on the next page

Griddle plate 700, W400 smooth

- Control lamp: Heat up
ON/OFF
- Size: W 400 x D 700 x H 850 mm
- Weight: 44.2 kg

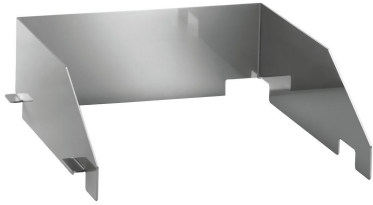


Griddle plate 700, W400 smooth

Add on Products

Splash guard 740

STAINLESS
STEEL



- Storage grille: No
- Material: Stainless steel
- Important information: -
- Size: W 354 x D 470 x H 120 mm
- Weight: 2.9 kg

Code-No. 285071
GTIN 4015613638263

Sealing plug



- Colour: White
- Material: Plastic
- Important information: -
- Diameter: 60 mm
- Size: W 60 x D 60 x H 60 mm
- Weight: 0.3 kg

Code-No. 286099
GTIN 4015613626802

Combi-Scraper



- Properties: Replaceable blade
- Designed for: Steel plates
Grilles
- Important information: -
- Material: Plastic
Aluminium
- Size: W 110 x D 210 x H 30 mm

Code-No. 529712
GTIN 4015613605500

Door 700 40/80LR

CNS
18/10



- Door hinge side can be changed: Yes
- Door hinge side: Left / right
- Material: CNS 18/10
- Important information: -
- Size: W 395 x D 80 x H 460 mm
- Weight: 3.4 kg

Code-No. 285050
GTIN 4015613486604