



190153 / 1190



190154 / 2190

Gebrauchsanleitung
Kaffeestation **D/A/CH**

Instruction manual
Coffee station **GB/UK**

Mode d'emploi
Présentoir à café **F/B/CH**

Manuale di utilizzo
Stazione caffè **I/CH**

Instrucciones de uso
Estación de café **E**

Manual de instruções
Estação de café **P**

Gebruiksaanwijzing
Koffiestation **NL/B**

Bedieningshandleiding
Kaffestation **DK**

Инструкция по эксплуатации
Кофестанция **RUS**

Kullanma kılavuzu
Kahve istasyonu **TR**

Instrukcja obsługi
Podstawa serwisowa do kawy **PL**

Návod k obsluze
Kavova stanice **CZ**

Upute za upotrebu
Stanica za pripremu kave **HR**

Használati útmutató
Kavekinalo **H**

Οι οδηγίες χρήσης
Σταθμός καφέ **GR**

Technical information

Description	Coffee Station 1190 for 1 thermo jug
Code-no.:	190153
Material:	Plastic
Dimensions:	W 440 x D 340 x H 145 mm
Weight:	1.15 kg
Accessories:	<ul style="list-style-type: none"> ▪ 1 removable plastic insert for a thermo jug, with 3-level height adjustment ▪ 1 drip tray with a lid

Description	Coffee station 2190 for 2 thermo jugs
Code-no.:	190154
Material:	Plastic
Dimensions:	W 660 x D 340 x H 145 mm
Weight:	1.8 kg
Accessories:	<ul style="list-style-type: none"> ▪ 2 removable plastic inserts for a thermo jug, with 3-level height adjustment ▪ 2 drip trays with a lid

Properties and design

The **coffee Station** is an ideal solution for an efficient buffet serving coffee or tea and suitable for all thermo jugs with a diameter up to 19 cm.

The following equipment is **within the scope of delivery**:

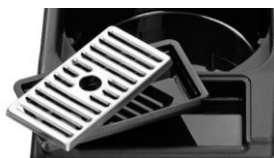


Removable plastic inserts, with 3-level height adjustment, so that every jug may be used for different cap sizes (figure below)





5 compartments (delivered without accessories) it ensures a lot of space for caps, spoons / stirrers, milk and sugar



Removable drip trays with a lid

Cleaning and maintenance

- Regularly empty the drip trays. Clean them with warm water and mild cleaning agent.
- The coffee station should be cleaned regularly with a moist, soft cloth, using a mild cleaning agent, if necessary.
- **Never** use abrasive cleaning agents which may scratch the surface.
- **Never** use caustic disinfectants.
- Never wash the coffee station in a dishwasher

Bartscher GmbH
Franz-Kleine-Str. 28
D-33154 Salzkotten
Germany

phone: +49 5258 971-0
fax: +49 5258 971-120
Service-Hotline: +49 5258 971-197
www.bartscher.com