

Chafing dish 2/3 Flexible



Description

Induction or glass ceramic – a GN 2/3 chafing dish for flexible use on a built-in hob. The removable lid makes it easy to change the GN container in buffets, canteens and front-cooking areas.

Features

- Depth GN container max.: 65 mm
- Content: 5,2 litre(s)
- Heating type: External, via level induction or glass ceramic installed hob
- Stackable: No
- Colour: Silver
- With handle(s): Yes
- GN-capable: Yes
- Functions: Keeping warm
- Properties: Heat control via external hob
Lift-up device for GN containers
- Material: Stainless steel
- Lid properties: With window
Soft-Close mechanism (hydraulic lid hinge)
Detachable, with handle
- Gastronorm: 2/3 GN
- Material handle(s): Stainless steel
Chrome-plated

▶ Continue on the next page



- ▶ Infinite possibilities
 - ✓ The chafing dish can be used in combination with an external hob.
 - ✓ Volume: 5.2 litres
 - ✓ 1 GN 2/3 container, 65 mm deep



- ▶ For an induction or glass ceramic hob
 - ✓ Possible heat control via the external built-in hob



- ▶ Soft-close mechanism
 - ✓ Removable lid with window



- ▶ Lift-up device
 - ✓ Easy removal of GN container

Chafing dish 2/3 Flexible

- Important information: An external hob is required to use the device
- Material lid: Stainless steel
Chrome-plated
Glass
- Including: 1 GN 2/3 container, 65 mm deep, Stainless steel
- Size: W 400 x D 425 x H 202 mm
- Weight: 5.45 kg



Chafing dish 2/3 Flexible Add on Products

Induction warming plate IW10



- Power load: 1 kW | 230 V | 50 Hz
- Equipment connection: Pluggable
- Temperature range: 50 °C to 100 °C
- Control unit: Toggle
- Control lamp: -
- Overheating protection: Yes
- Timer: No

Code-No. 114366
GTIN 4015613714806

Induction warming plate IW10-EBBF



- Warming station diameter: 280 mm
- Power load: 1 kW | 230 V | 50 Hz
- Equipment connection: Pluggable
- Temperature range: 50 °C to 100 °C
- Control unit: Electronic
- Control lamp: Touch
- Control lamp: Operational

Code-No. 105996
GTIN 4015613715421

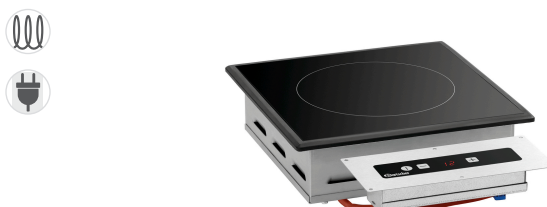
Induction warming plate IW10-EB



- Power load: 1 kW | 230 V | 50 Hz
- Material: Stainless steel
- Important information: -
- Equipment connection: Pluggable
- Temperature range: 40 °C to 100 °C
- Control unit: Electronic
- Control unit: Touch

Code-No. 114367
GTIN 4015613715704

Induction warming plate IW3-EBBF



- Warming station diameter: 195 mm
- Power load: 0,3 kW | 230 V | 50 Hz
- Equipment connection: Pluggable
- Temperature range: 40 °C to 95 °C
- Control lamp: -
- Size cerane surface: W 280 x D 280 mm
- Overheating protection: Yes

Code-No. 105864
GTIN 4015613746821

Chafing dish 2/3 Flexible

Add on Products

Induction warming plate IW3



- Power load: 0,3 kW | 230 V | 50-60 Hz
- Equipment connection: Pluggable
- Temperature range: 40 °C to 95 °C
- Control unit: Electronic
Touch
- Control lamp: -
- Size cerane surface: W 390 x D 390 mm

Code-No. 105865
GTIN 4015613746838

Induction warming plate IW3-SW



- Power load: 0,3 kW | 230 V | 50-60 Hz
- Material: Steel
- Important information: -
- Equipment connection: Pluggable
- Temperature range: 40 °C to 95 °C
- Control unit: Electronic
Touch

Code-No. 105867
GTIN 4015613773117