

## Buffet trolley, cold, 4x 1/1 GN



▶ Designed for:

- ✓ 4 x GN 1/1
- ✓ Max. depth of GN containers: 150 mm



▶ Prepared for attachment of matching tray chute on both sides

### Description

Cold food perfectly presented.  
The buffet cart is optimally equipped with integrated lighting, sneeze guard with shelf function and wheels for convenient transport.

### Features

• Cooling:	Static
• Coolant:	R290 / 0,060 kg
• Power load:	0,507 kW   230 V   50 Hz
• Number of tanks:	1
• Temperature range:	2 °C to 10 °C
• Basin size, GN format:	4 x 1/1 GN
• Control lamp:	ON/OFF
• Drain cock:	No
• Germ guard:	Yes
• Lighting:	On the germ guard
• Delivery state:	Building kit (simple assembly)
• Swivel casters:	4 swivel casters, 2 with brake
• Properties:	Work surface made of Granit Rosa Porrino Stainless steel sink
• Colour:	Teak
• Not included in delivery:	GN containers
• Depth GN container max.:	150 mm

▶ Continue on the next page

## Buffet trolley, cold, 4x 1/1 GN

- Material: Wood
- Important information: -
- Size: W 1,590 x D 880 x H 1,370 mm
- Weight: 148.2 kg



## Buffet trolley, cold, 4x 1/1 GN Add on Products

### GN-container, 1/1GN,D150, Basic Line

CNS



- Content: 21 litre(s)
- Stackable: Yes
- Design: No perforation
- Reinforced edge: No
- Surface: Silk matt
- Depth container: 150 mm
- Gastronorm: 1/1 GN

Code-No. 711150  
GTIN 4015613695600

### GN-container, 1/2GN,D150, Basic Line

CNS



- Content: 9,5 litre(s)
- Stackable: Yes
- Design: No perforation
- Reinforced edge: No
- Surface: Silk matt
- Depth container: 150 mm
- Gastronorm: 1/2 GN

Code-No. 712150  
GTIN 4015613695723

### GN-container, 1/3GN,D150, Basic Line

CNS



- Content: 5,75 litre(s)
- Stackable: Yes
- Design: No perforation
- Reinforced edge: No
- Surface: Silk matt
- Depth container: 150 mm
- Gastronorm: 1/3 GN

Code-No. 713150  
GTIN 4015613695792

### GN container, 1/1, D150

CNS  
18/10



- Content: 21 litre(s)
- Stackable: Yes
- Design: No perforation
- Reinforced edge: No
- Properties: -
- Surface: High-gloss
- Depth container: 150 mm

Code-No. A120610  
GTIN 4016098101204

## Buffet trolley, cold, 4x 1/1 GN Add on Products

### GN container, 1/2, 150mm, 9,5 L

CNS  
18/10



- Content: 9,5 litre(s)
- Stackable: Yes
- Design: No perforation
- Reinforced edge: No
- Properties: -
- Surface: High-gloss
- Depth container: 150 mm

Code-No. A120620  
GTIN 4015613278988

### GN container, 2/4, D150

CNS  
18/10



- Content: 9 litre(s)
- Stackable: Yes
- Design: No perforation
- Reinforced edge: No
- Properties: -
- Surface: High-gloss
- Depth container: 150 mm

Code-No. A128150  
GTIN 4015613271156

### GN container, 1/3, D150

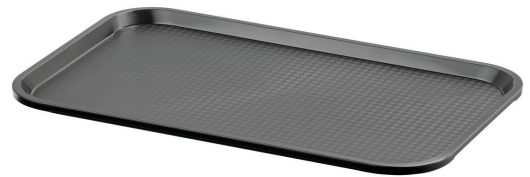
CNS  
18/10



- Content: 5,75 litre(s)
- Stackable: Yes
- Design: No perforation
- Reinforced edge: No
- Properties: -
- Surface: High-gloss
- Depth container: 150 mm

Code-No. A123150  
GTIN 4016098101266

### Tray GN110-S



- Colour: Black
- Important information: -
- Dishwasher safe: Yes
- Stackable: Yes
- Dimensions surface: W 495 x D 290 mm
- Worktop surface: Structured
- Norm format: 1/1 GN

Code-No. 701053  
GTIN 4015613695303

## Buffet trolley, cold, 4x 1/1 GN Add on Products

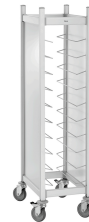
### Tray KN45350-HG



- Colour: Light grey
- Worktop surface: Structured
- Stackable: Yes
- Dishwasher safe: Yes
- Properties: -
- Material: Plastic (polypropylene)
- Important information: -

Code-No. 701054  
GTIN 4015613695310

### Tray trolley AT1000-GN



- Can be loaded from both sides: Yes
- Designed for: Fast-Food trays  
Serving trays
- Worktop surface: No
- Properties: -
- Including: -
- Model: Tray holders

Code-No. 300149  
GTIN 4015613709185

### Tray slide, 1 piece, 4x 1/1 GN



Abbildung ähnlich

- Material: Stainless steel
- Important information: -
- Size: W 1,500 x D 310 x H 120 mm
- Weight: 4 kg

Code-No. 125503  
GTIN 4015613570846