

Mini cold room 1240L



Description

Features

- Power load: 0,571 kW | 230 V | 50 Hz
- Temperature range: 2 °C to 10 °C
- Temperature control: Digital
- Control unit: Electronic
- Knob: Knob
- Content: 1240 litre(s)
- Size inside: W 820 x D 860 x H 1760 mm
- Door hinge side can be changed: Yes
- Control lamp: yes
- Door hinge side: Right
- Climate class: 4
- Cooling: Compressor
- Digital display: Yes
- Interior lighting: No
- Insulation: Polyurethane, 60 mm
- Delivery state: Permanently mounted
- Type of door: Leaf door(s)

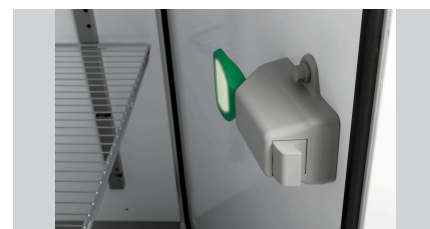
▶ Continue on the next page



- ▶ Cold store
 - ✓ Content: 1240 litres
 - ✓ Dimensions: W 855 x D 900 x H 1760 mm



- ▶ Prepared for:
 - ✓ Bearing rails
 - ✓ Grilles
 - ✓ Suspension device
 - ✓ Access ramp



- ▶ Door
 - ✓ With a panic lock
 - ✓ Lockable
 - ✓ Door hinge side can be changed

- ▶ Design
 - ✓ Fully assembled

Mini cold room 1240L

• Automatic defrosting function:	Yes
• Drip water evaporation:	Yes
• ON/OFF switch:	Yes
• Lockable:	Yes
• Properties:	Panic lock Prepared for bearing rails, grilles, suspension device, access ramp
• Ambient temperature:	16 °C to 38 °C
• Thermostat:	Yes
• Not included in delivery:	Bearing rails, grilles, suspension device, access ramp
• Material inside:	Aluminium Stainless steel base
• Material:	Steel plate PVC coated
• Important information:	-
• Coolant:	R290 / 0,130 kg
• Size:	W 980 x D 1,040 x H 2,200 mm
• Weight:	158.2 kg

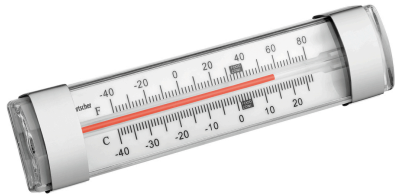


Mini cold room 1240L

Add on Products

Thermometer A250

STAINLESS
STEEL



- Important information: -
- Including: -
- Material: Stainless steel
Plastic
- Colour: White
Silver
- Design: Analogue

Code-No. 292043
GTIN 4015613664279

Thermometer A500



- Application area: Canteens
Refrigeration cell
Freezer cell
Refrigerated rooms
- Temperature range: -30 °C to 50 °C
- Designed for: Room temperature measurements
Refrigerators / upright freezers

Code-No. 292049
GTIN 4015613664286

Thermometer A300

STAINLESS
STEEL



- Control unit: -
- Application area: Canteens
Refrigeration cell
Freezer cell
Refrigeration cell
- Temperature range: -30 °C to 30 °C
- Design: Analogue

Code-No. 292048
GTIN 4015613664262