

Ice-cream cabinet 300L



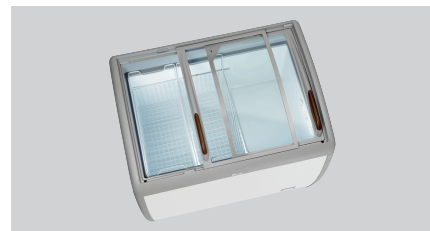
Description

Everyone will want an ice-cream! Perfectly positioned near the till in supermarkets, service stations, and at kiosks, this ice-cream cabinet with its LED lighting and 300-litre volume will grab the attention of any ice-cream lover.

Features

• Colour:	White
• Material:	Steel plate Painted Plastic
• Material inside:	Plastic
• Important information:	-
• Dimensions inside:	W 845 x D 525 x H 480-300 mm
• Content:	300 litre(s)
• Useful content:	185 litre(s)
• Number of baskets:	2
• Size basket:	W 250 x D 520 x H 200 mm
• Temperature range:	-22 °C to -18 °C
• Temperature control:	Thermostatic Stepless
• Temperature display:	Analogue
• Cooling:	Static
• Coolant:	R290 / 0,064 kg

▶ Continue on the next page



▶ Content: 300 litres



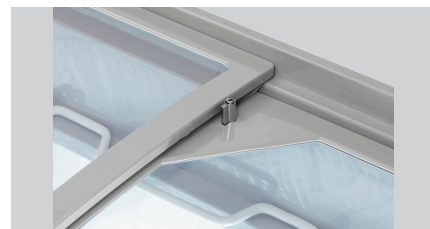
▶ 2 sliding glass lids:
✓ Single-glazed, double-tempered
✓ Safety glass

▶ LED lighting

▶ 4 swivel casters
✓ 2 with brake



▶ Safe temperature adjustment
✓ Only possible with tool



▶ Lockable

Ice-cream cabinet 300L

- GWP: 3
- Climate class: 4
- Ambient temperature: to 30 °C
- Energy efficiency class: F (EU No. 2019 / 2018)
- Energy consumption: 934 kWh / an
- Sliding glass lids: 2
- Safety glass: Single-glazed, double-tempered
- Insulation: Yes
- Automatic defrosting function: Cyclopentane C5H10, 70 mm
- Drip water evaporation: No
- Thermostat: Yes
- Lighting: LED
- Lockable: Yes
- Swivel casters: 4 swivel casters, 2 with brake
- Control unit: Setting screw
- Control lamp: ON/OFF
- ON/OFF switch: In operation
- Including: Yes
- Power load: Cooling active
- Size: 2 baskets
- Weight: 0,164 kW | 230 V | 50 Hz
- Weight: W 1,000 x D 710 x H 850 mm
- Weight: 51.2 kg

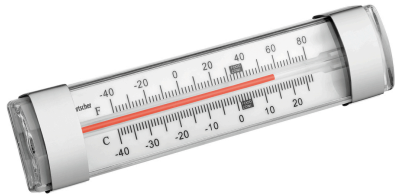


Ice-cream cabinet 300L

Add on Products

Thermometer A250

STAINLESS
STEEL



- Important information: -
- Including: -
- Material: Stainless steel
Plastic
- Colour: White
Silver
- Design: Analogue

Code-No. 292043
GTIN 4015613664279

Thermometer A300

STAINLESS
STEEL



- Control unit: -
- Application area: Canteens
Refrigeration cell
Freezer cell
Refrigeration cell
- Temperature range: -30 °C to 30 °C
- Design: Analogue

Code-No. 292048
GTIN 4015613664262