

## Combination fridge/freezer KTK1-122



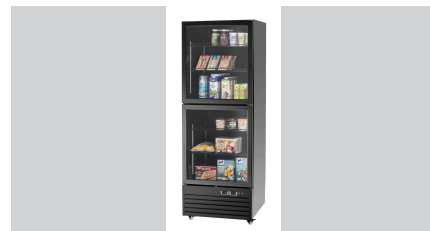
### Description

Combination of refrigerator and freezer in an all-black elegant design. Glass door allow a direct view of the food, which can be illuminated perfectly with the LED lighting that can be separately switched.

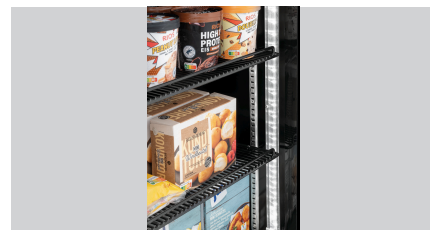
### Features

• Colour:	Black
• Front pane:	Framed
• Material:	Steel, painted
• Important information:	-
• Type of glass:	Double glazing
• Material inside:	Plastic, black
• Safety glass:	No
• Useful content:	430 litre(s)
• Number of intermediate shelves:	4
• Type of intermediate shelves:	Grate, painted
• Dimensions of intermediate shelves:	W 565 x D 475 mm
• Height-adjustable intermediate shelves:	Yes
• Distance between trays:	15 mm
• Cooling:	Circulating air Compressor
• Temperature range:	-18 °C to -22 °C 0 °C to 10 °C

▶ Continue on the next page



▶ Usable volume: 430 litres



▶ 2 intermediate shelves in each cooling compartment

✓ Dimensions: W 565 x D 475 mm

▶ Fridge at top | Freezer on bottom



▶ Digital display

▶ LED lighting, separately switchable



▶ 4 swivel casters

✓ 2 with brakes

▶ Energy efficiency class: C



## Combination fridge/freezer KTK1-122



- Temperature control: In 1 °C steps
- Thermostat: Yes
- Ambient temperature: 16 °C to 25 °C
- Energy efficiency class: C (EU No. 2019 / 2018)
- Energy consumption: 3650 kWh / an
- Climate class: 3
- Coolant: R290 / 0,100 kg
- Automatic defrosting function: Yes
- Drip water evaporation: Yes
- Number of doors: 2
- Type of door: Leaf door, glass
- Door hinge side: Right
- Door hinge side can be changed: No
- Insulation: Cyclopentan 60 mm
- Digital display: Yes
- Interior lighting: Yes
- Lockable: No
- Height-adjustable feet: No
- Control unit: Electronic
- ON/OFF switch: No
- Control lamp: -
- Properties: Fridge at top | Freezer at bottom  
4 swivel casters, 2 with brake  
LED lighting, separately switchable  
Heating unit to prevent condensation
- Power load: 0,767 kW | 230 V | 50 Hz
- Size: W 700 x D 780 x H 2,000 mm
- Weight: 121.4 kg



## Combination fridge/freezer KTK1-122

### Add on Products

#### Thermometer A500

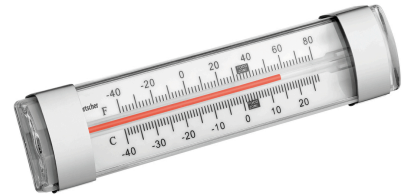


- Application area: Canteens  
Refrigeration cell  
Freezer cell  
Refrigerated rooms
- Temperature range: -30 °C to 50 °C

Code-No. 292049  
GTIN 4015613664286

#### Thermometer A250

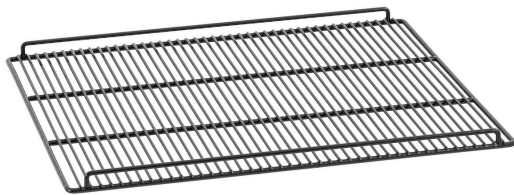
STAINLESS  
STEEL



- Important information: -
- Including: -
- Material: Stainless steel  
Plastic
- Colour: White  
Silver
- Design: Analogue

Code-No. 292043  
GTIN 4015613664279

#### Insert grate KTK1-122



- Material: Steel  
Plastic coated
- Important information: Colour black
- Load-bearing capacity max.: 25 kg
- Size: W 565 x D 472 x H 37 mm
- Weight: 2.13 kg

Code-No.  
GTIN 4015613865508