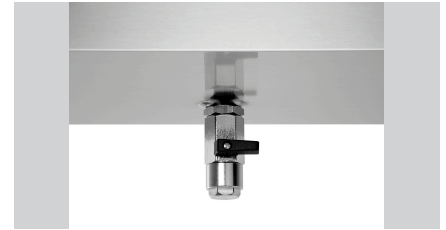


Wall-mounted hood 900, W1600



Description

Features

- Material: CNS 18/10
- Operating mode: Exhaust air
- Important information: -
- Assembly type: Wall
- With motor: No
- Flame protection filter: Type A
- Number of filters: 3
- Material filter: CNS 18/10
- Protection class: IP44
- Lighting: yes
- Lamps (number + watt): 1 x 36 W
- Available on request: Ceiling hood
Wall hood series 1100
Other sizes
- Properties: Blare-free light installed with grease protection cover
Filter carrier with additional grease collection channel
- Including: -

▶ Continue on the next page

Wall-mounted hood 900, W1600

- Power load: 0,036 kW | 230 V | 50-60 Hz
- Size: W 1,600 x D 900 x H 450 mm
- Weight: 35 kg



Wall-mounted hood 900, W1600

Add on Products

Control, steplessly variable



- Important information: -
- Material: Plastic
- Designed for: Extractor hoods with 1 phase
- Protection class: IP54
- Control unit: Toggle
- ON/OFF switch: Yes
- Light switch: Yes

Code-No. 220110
GTIN 4015613603056