

Glass-doored refrigerator 300L



Description

Black, slim, elegant: A special design that immediately catches the eye. Food and drinks are more appealing and appear higher-value in this refrigerator with its glass door and LED lighting.

Features

• Front pane:	Framed
• Dimensions of intermediate shelves:	W 355 x D 450 mm
• Material:	Steel
	Coated
	Glass
	Plastic ABS
• Safety glass:	Yes
• Material inside:	Steel
	Coated
• Important information:	-
• Type of glass:	Double glazing
• Colour:	Black
• Including:	-
• Content:	300 litre(s)
• Useful content:	281 litre(s)
• Cooling:	Circulating air
• Temperature range:	2 °C to 8 °C

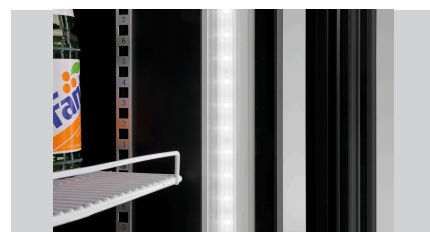
► Continue on the next page



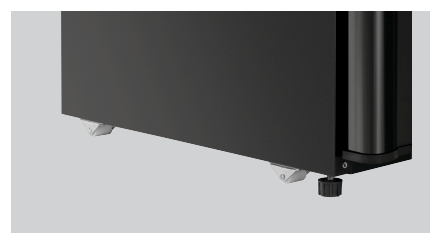
► Content: 300 litres

► Climate class: 4

► 4 height-adjustable intermediate shelves
✓ W 355 x D 450 mm



► LED lighting with separate on/off switch



► 4 casters, 2 adjustable feet

Glass-doored refrigerator 300L



• Temperature control:	Mechanical
• Thermostat:	Stepless
• Insulation:	Yes
• Advertising display:	Cyclopentane C5H10, 43 mm
• Coolant:	-
• GWP:	R600a / 0,09 kg
• Climate class:	3
• Ambient temperature:	CC3
• Drip water evaporation:	Up to 40 °C
• Energy efficiency class:	Yes
• Energy consumption:	F (EU No. 2019 / 2018)
• Automatic defrosting function:	953 kWh / an
• Type of intermediate shelves:	No
• Number of intermediate shelves:	Grille, plastic coated
• Height-adjustable intermediate shelves:	4
• With price strips:	Yes
• Lockable:	No
• Interior lighting:	No
• Digital display:	Yes
• Control unit:	No
• Type of door:	Knob
	Leaf door, glass
	Self-closing
• Number of doors:	1
• Door hinge side:	Right
• Door hinge side can be changed:	No
• Height-adjustable feet:	No
• ON/OFF switch:	No
• Control lamp:	-
• Properties:	1 fan
	LED lighting, separately switchable
	4 casters, 2 adjustable feet
• Power load:	0,3 kW 230 V 50 Hz
• Size:	W 440 x D 708 x H 1,840 mm
• Weight:	78 kg

Glass-doored refrigerator 300L

Add on Products

Thermometer A300

STAINLESS
STEEL



- Control unit: -
- Application area: Canteens
Refrigeration cell
Freezer cell
Refrigeration cell
- Temperature range: -30 °C to 30 °C
- Design: Analogue

Code-No. 292048
GTIN 4015613664262

Thermometer A500

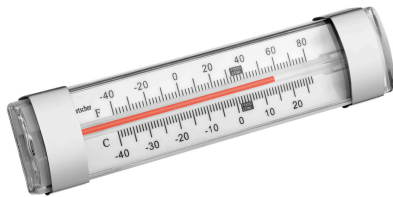


- Application area: Canteens
Refrigeration cell
Freezer cell
Refrigerated rooms
- Temperature range: -30 °C to 50 °C
- Designed for: Room temperature measurements
Refrigerators / upright freezers

Code-No. 292049
GTIN 4015613664286

Thermometer A250

STAINLESS
STEEL



- Important information: -
- Including: -
- Material: Stainless steel
Plastic
- Colour: White
Silver
- Design: Analogue

Code-No. 292043
GTIN 4015613664279