

Buffet trolley, hot, 4x 1/1GN



- ▶ Designed for
 - ✓ 4 x 1/1 GN
 - ✓ Depth GN container max: 150 mm
- ▶ Prepared for attachment of the matching tray chute on both sides

Description

Hot food perfectly presented. The buffet cart is optimally equipped with integrated lighting, sneeze guard with shelf function and wheels for convenient transport.

Features

• Power load:	3 kW 230 V 50/60 Hz
• Number of tanks:	1
• Temperature range:	30 °C to 90 °C
• Basin size, GN format:	4 x 1/1 GN
• Control lamp:	ON/OFF
• Drain cock:	Yes
• Germ guard:	Yes
• Lighting:	On the germ guard
• Delivery state:	Building kit (simple assembly)
• Swivel casters:	4 swivel casters, 2 with brake
• Properties:	Work surface made of Granit Rosa Porrino Stainless steel sink
• Colour:	Teak
• Not included in delivery:	GN containers
• Depth GN container max.:	150 mm
• Material:	Wood
• Important information:	-

▶ Continue on the next page

Buffet trolley, hot, 4x 1/1GN

- Size:
- Weight:

W 1,490 x D 880 x H 1,370 mm
136 kg



Buffet trolley, hot, 4x 1/1GN Add on Products

GN-container, 1/1GN,D150, Basic Line

CNS



- Content: 21 litre(s)
- Stackable: Yes
- Design: No perforation
- Reinforced edge: No
- Surface: Silk matt
- Depth container: 150 mm
- Gastronorm: 1/1 GN

Code-No. 711150
GTIN 4015613695600

GN-container, 1/2GN,D150, Basic Line

CNS



- Content: 9,5 litre(s)
- Stackable: Yes
- Design: No perforation
- Reinforced edge: No
- Surface: Silk matt
- Depth container: 150 mm
- Gastronorm: 1/2 GN

Code-No. 712150
GTIN 4015613695723

GN-container, 1/3GN,D150, Basic Line

CNS



- Content: 5,75 litre(s)
- Stackable: Yes
- Design: No perforation
- Reinforced edge: No
- Surface: Silk matt
- Depth container: 150 mm
- Gastronorm: 1/3 GN

Code-No. 713150
GTIN 4015613695792

GN container, 1/1, D150

CNS
18/10



- Content: 21 litre(s)
- Stackable: Yes
- Design: No perforation
- Reinforced edge: No
- Properties: -
- Surface: High-gloss
- Depth container: 150 mm

Code-No. A120610
GTIN 4016098101204

Buffet trolley, hot, 4x 1/1GN Add on Products

GN container, 1/2, 150mm, 9,5 L

CNS
18/10



- Content: 9,5 litre(s)
- Stackable: Yes
- Design: No perforation
- Reinforced edge: No
- Properties: -
- Surface: High-gloss
- Depth container: 150 mm

Code-No. A120620
GTIN 4015613278988

GN container, 2/4, D150

CNS
18/10



- Content: 9 litre(s)
- Stackable: Yes
- Design: No perforation
- Reinforced edge: No
- Properties: -
- Surface: High-gloss
- Depth container: 150 mm

Code-No. A128150
GTIN 4015613271156

GN container, 1/3, D150

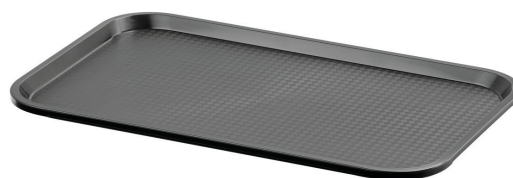
CNS
18/10



- Content: 5,75 litre(s)
- Stackable: Yes
- Design: No perforation
- Reinforced edge: No
- Properties: -
- Surface: High-gloss
- Depth container: 150 mm

Code-No. A123150
GTIN 4016098101266

Tray GN110-S



- Colour: Black
- Important information: -
- Dishwasher safe: Yes
- Stackable: Yes
- Dimensions surface: W 495 x D 290 mm
- Worktop surface: Structured
- Norm format: 1/1 GN

Code-No. 701053
GTIN 4015613695303

Buffet trolley, hot, 4x 1/1GN Add on Products

Tray KN45350-HG



- Colour: Light grey
- Worktop surface: Structured
- Stackable: Yes
- Dishwasher safe: Yes
- Properties: -
- Material: Plastic (polypropylene)
- Important information: -

Code-No. 701054
GTIN 4015613695310

Tray trolley TT1600



- Can be loaded from both sides: Yes
- Worktop surface: Yes, with railing
- Delivery state: Building kit (simple assembly)
- Swivel casters: 4 swivel casters, 2 with brake
- Diameter casters: 125 mm
- With handle(s): Yes
- Material: Chrome-nickel steel

Code-No. 300083
GTIN 4015613587615