

Candy floss machine B5000



Description

Even small amounts of sugar can be made into fluffy candy floss with the candy floss machine B5000. This powerful model enables continuous candy floss production at a top professional level.

Features

- Material: Stainless steel
Painted
- Tub: Ø inside 500 mm
Stainless steel
Dishwasher-suitable
Detachable
- Important information: -
- Production time: 30 - 60 seconds / pc
- Motor: Rocket switch
Can be switched separately
- Temperature control: Rocket switch
Can be switched separately
- Voltage display: Yes
- Fuse: Yes
- Integrated drawer: 3 compartments
yes
- Not included in delivery: Sugar

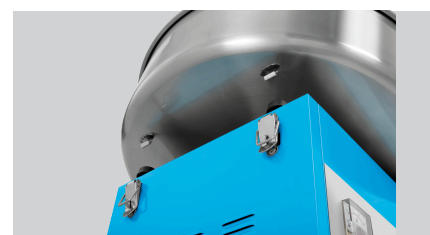
▶ Continue on the next page



- ▶ Fast preparation
- ✓ Production time: 30 - 60 sec./unit



- ▶ Sophisticated
- ✓ Separate controls for temperature and rotation



- ▶ Easy cleaning: Removable tub
- ✓ Inner Ø 500 mm
- ✓ Dishwasher-safe



- ▶ Practical and tidy
- ✓ 3-part drawer for sugar, sticks, food dyes and flavourings

Candy floss machine B5000

- Not included in delivery:
- Including:
- Power load:
- Size:
- Weight:

Wooden sticks
Spare toothed belt
Measuring spoon (12 -18 g)
1,2 kW | 230 | 50/60 Hz
W 520 x D 520 x H 480 mm
11.11 kg



Candy floss machine B5000

Add on Products

Protective Cover B5000



- Material: PMMA plastic
- Designed for: Candy floss machine B5000
- Important information: -
- Size: W 531 x D 531 x H 360 mm
- Weight: 1.2 kg

Code-No. 137202
GTIN 4015613842547