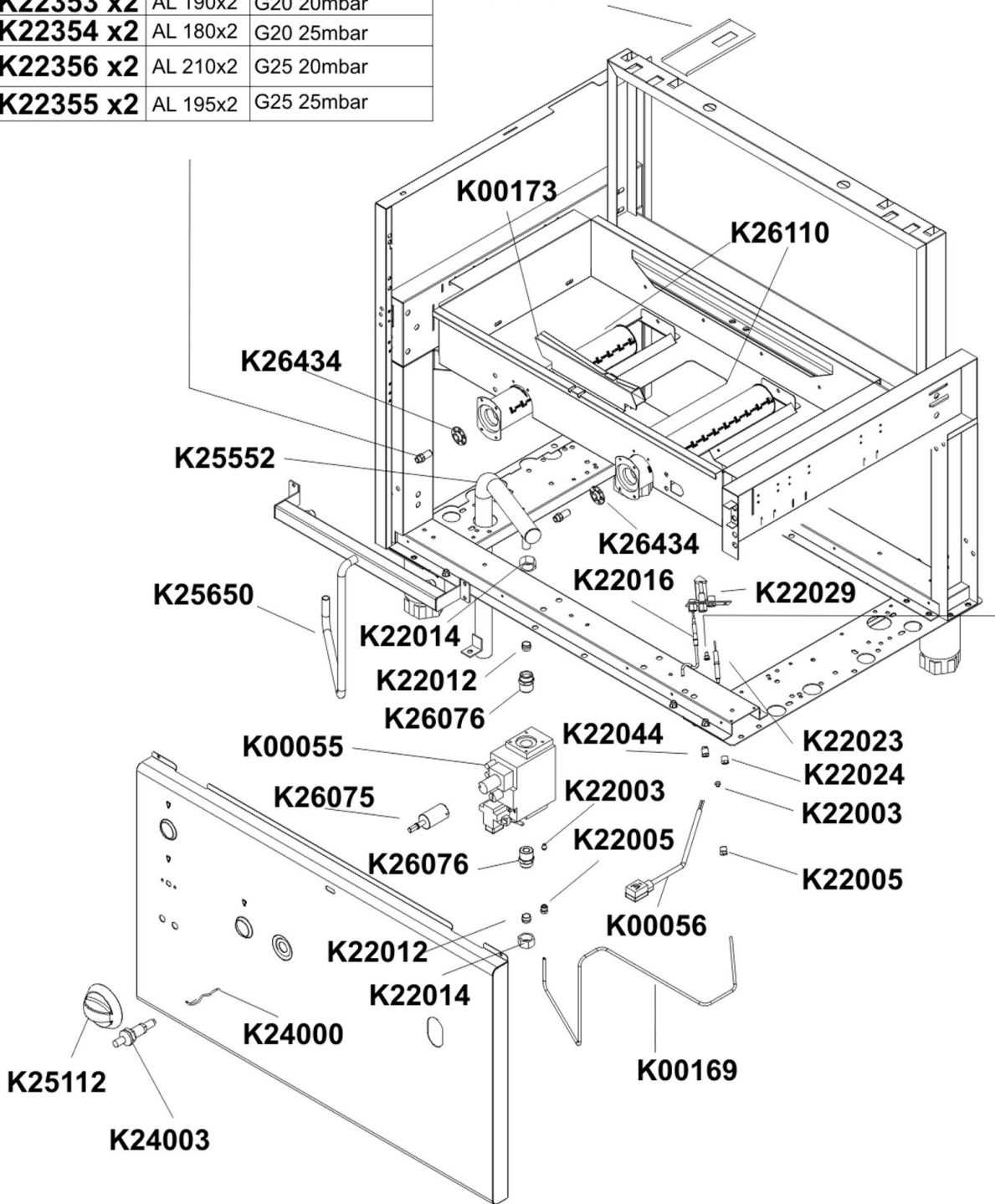
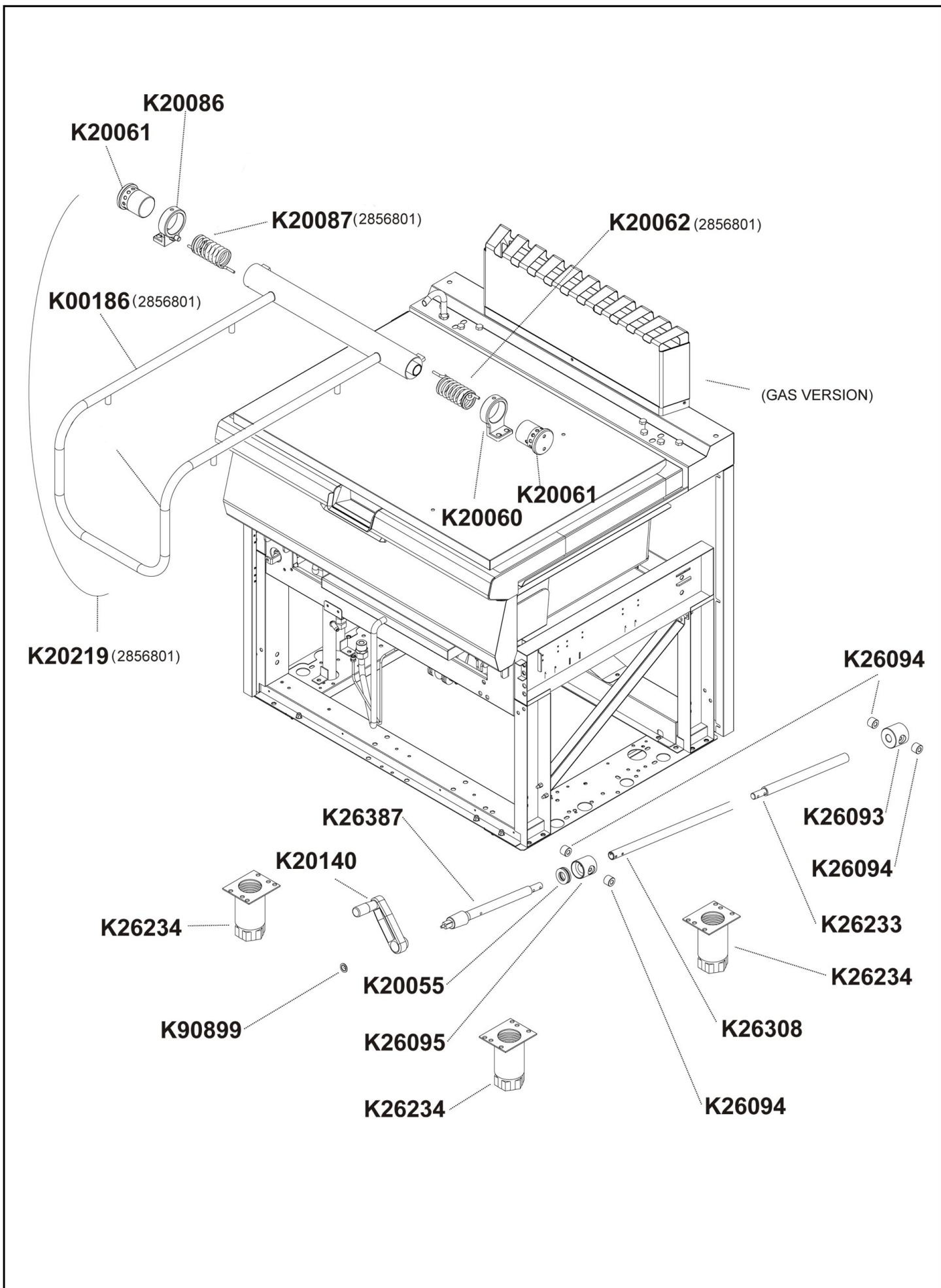


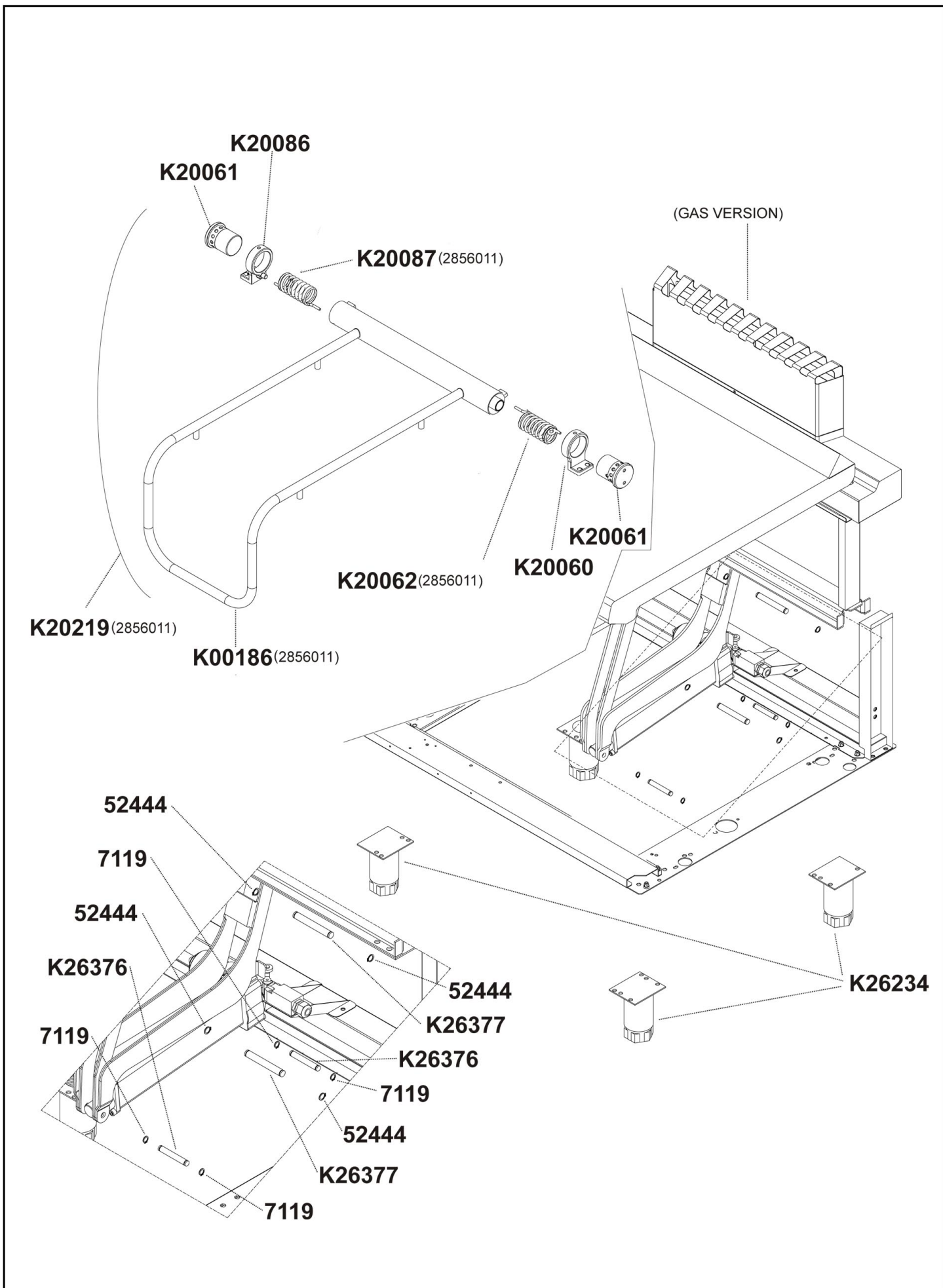
COD.	Φ	GAS
K22351 x2	AL 125x2	G30/31 28..37mbar
K22352 x2	AL105Rx2	G30/31 50mbar
K22353 x2	AL 190x2	G20 20mbar
K22354 x2	AL 180x2	G20 25mbar
K22356 x2	AL 210x2	G25 20mbar
K22355 x2	AL 195x2	G25 25mbar

K70486 (2856801)
K70664 (2856011)

COD.	Φ	GAS
K22030	16.2	G30/31 28..37mbar G30/31 50mbar
K22130	27.2	G20 20mbar G25 25mbar G25 20mbar







Pos.	Artikelbeschreibung	Description of item	Artikel Nr./Item No.
7119	Sicherungsring D 12	Locking ring D 12	049910
52444	Sicherungsring	Locking ring	049911
K00055	Gasarmatur	Gas fittings	E01871200
K00056	Anschluss z. Novasitventil	Connection Novasit valve	049402
K00169	Rohr z. Zündbrenner	Pipe f. ignition burner	054354
K00173	Überzündbrücke	Ignition bridge	054355
K00186	Griff	Handle	051002
K20029	Kugelhahn 1/2 Zoll	Ball valve 1/2"	049044
K20030	Bügel	Clamp	049650
K20031 + K25649 + K25533 + K20032	Rohr komplett, unten	Pipe complete, lower	049386
K20032	Bogen 1/2 Zoll x 12	Bow 1/2" x 12	049873
K20034	Rohr oben	Upper pipe	=> Pos. K25729
K20037	Verbindungsstück, 1/2 Zoll, D 12	Connecting piece, 1/2", D 12	049874
K20055	Tangentiallager SKF 51104	Bearing SKF 51104	049382
K20060	Träger rechts f. Scharnier	Right support f. hinge	049374
K20061	Zapfen links/rechts f. Scharnier	Left/right pintle f. hinge	049370
K20062	Feder-Set, links u. rechts	Spring set, left and right	E02050005
K20086	Träger links f. Scharnier	Left support f. hinge	049371
K20087	Feder-Set, links u. rechts	Spring set, left and right	E02050005
K20140	Kurbel, Vierkantaufnahme	Crank	052332
K20219	Scharnier	Hinge	051003
K22003	Schneidring	Cutting ring	0MA673600
K22005	Muffennippel, Messing	Bush nipple, brass	024540
K22012	Doppelkegelring D 12 mm	Double taper seal D 12 mm	024543
K22014	Mutter D 12 mm, 20 x 1,5 mm	Nut D 12 mm, 20 x 1,5 mm	024542
K22016	Thermoelement 450 mm	Thermocouple 450 mm	049608
K22023	Zündkerze	Ignition plug	01888300
K22024	Anschluss z. Zündkerze	Connection f. ignition plug	054361
K22029	Zündbrenner	Ignition burner	049073
K22030	Zünddüse, Propan, D 16	Ignition nozzle, propane, D 16	016136
K22044	Verschraubung z. Thermoelement	Screw connection f. thermocouple	020219
K22130	Zünddüse, Erdgas, D 27	Ignition nozzle, natural gas, D 27	016137
K22352	Düse, Propan D105R	Nozzle, propane D105R	051018
K22353	Düse, Erdgas H D190	Nozzle, natural gas H D190	051019
K22356	Düse, Erdgas L D210	Nozzle, natural gas L D210	051020
K24000	Zündkabel 450 mm	Ignition cable 450 mm	049311
K24003	Piezozünder D 18 mm	Piezo igniter D 18 mm	049069
K25101	Knebel z. Wassereinlauf, 10 x 8	Knob f. water intake, 10 x 8	049045
K25112	Knebel 8 x 6,5	Knob 8 x 6,5	049399
K25533	Rohr, 1/2 x 1/2 Zoll	Pipe, 1/2 x 1/2"	049875
K25552	Gasrampe	Gas ramp	049957
K25649	Rohr komplett, unten	Pipe complete, lower	=> Pos. K20031
K25650 + K26076 + K22037 + K22012 + K22014	Düsenrohr komplett	Complete pipe	0494033
K25729	Rohr oben	Upper pipe	049915
K26070	Rohr oben	Upper pipe	=> Pos. K25729
K26075	Verlängerung z. Knebel	Knob extension	049397
K26076	Düsenrohr komplett	Complete pipe	=> Pos. K25650
K26093	Mutter	Nut	049377
K26094	Buchse	Socket	049376

