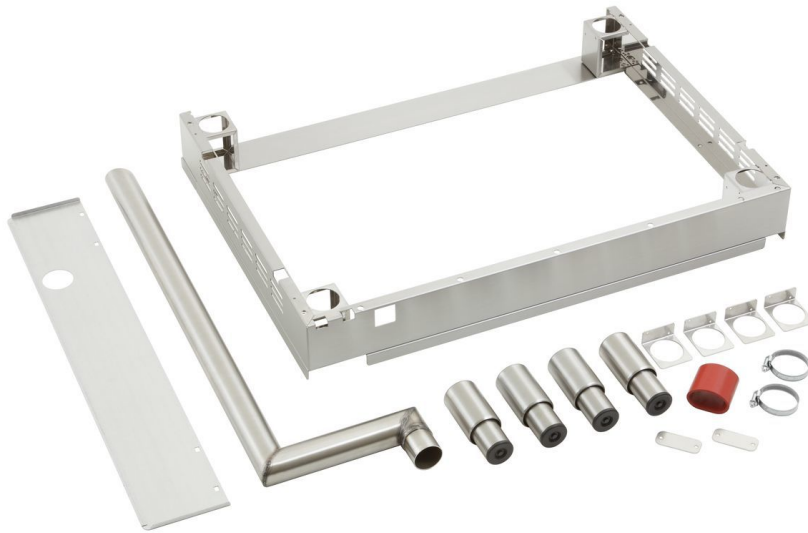


Connection kit Silversteam

► Designed for the electrical GN 1/1 combi-steamers in the Silversteam series



Description

The space-saving solution: The connection kit allows 2 electrical GN 1/1 combi-steamers in the Silversteam range to be stacked.

Features

- Material: Stainless steel
- Designed for: Electric 1/1 GN combi-steamers from the Silversteam series
- Combination possibilities:
 - 5 x 1/1 GN to 5 x 1/1 GN
 - 5 x 1/1 GN to 7 x 1/1 GN
- Important information: -
- Size frame: W 876 x D 622 x H 114 mm
- Set comprises:
 - 1 frame
 - 1 pipe and holding plate for vapour extraction
 - 1 connection hose
 - 4 feet
 - Attachment circlips
 - Screws
- Size: W 876 x D 622 x H 114 mm
- Weight: 9.2 kg