

Core temperature sensor set 1KA



Description

Core temperature sensor set as an ideal supplement to the Bartscher combi-steamers. The magnetic retention mechanism allows easy attachment to these all-round units.

Features

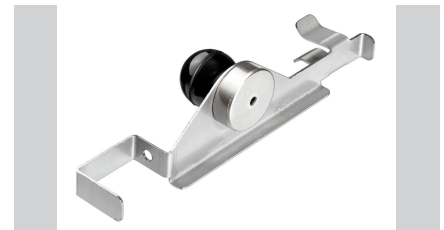
- Designed for: Combi steamers series Silversteam
- Material temperature sensor: Stainless steel
- Important information: -
- Number of measuring points: 1
- Length cable: 1,8 m
- Set comprises: 1 core temperature sensor
1 holder
- Size: W 180 x D 265 x H 25 mm
- Weight: 0.57 kg



- ▶ Designed for the combi-steamers in the Silversteam



- ▶ Cable length of core temperature sensor: 1.8 m



Retention: Magnetic