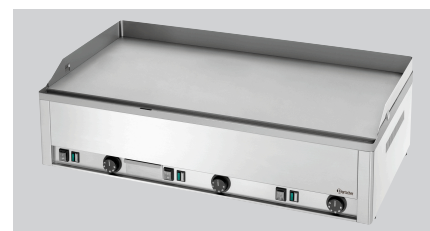


Griddle plate GDP 980E-G



- ▶ Roasting surface design
 - ✓ Steel, smooth
 - ✓ Dimensions: W 980 x D 480 mm



- ▶ Heating zones:
 - ✓ 3
 - ✓ Can be switched separately

Description

Features

- Heating zones can be controlled separately: Yes
- Power load: 9 kW | 400 V | 50 Hz
- Equipment connection: 3 NAC
- Type: Table-top unit
- Temperature range: 50 °C to 300 °C
- Material roasting surface: Steel
- Size heating surface: W 980 x D 480 mm
- Roasting surface design: Smooth
- Including: 1 cleaning scraper
- Operating mode: Electro
- Number of heating zones: 3
- Material: CNS 18/10
- Important information: -
- Series: GDP
- Properties: Grease collection tank
Backsplash welded on
Operational
- Control lamp:

▶ Continue on the next page

Griddle plate GDP 980E-G

- Safety thermostat: No
- Size: W 990 x D 580 x H 310 mm
- Weight: 68.6 kg



Griddle plate GDP 980E-G Add on Products

Power cleaner F1L, set of 2



- Designed for: Stubborn dirt, especially in kitchens
Grill and combi steamer cleaning (without cleaning system)
- Content: 2 x 1 litre
- Model: Liquid
High concentrate
- Ph level: 13,5

Code-No. 173078
GTIN 4015613731926

Intensive power cleaner F1L, set of 2



- Order quantity unit: 1 box (2 bottles)
- Content: 2 x 1 litre
- Ph level: 14
- HACCP compliant: Yes
- Chlorine-free: Yes
- Phosphate-free: Yes
- Including: 1 spray head

Code-No. 173080
GTIN 4015613731933