

Electric pasta cooker, 1 basin



Description

The 900 Master series and its high-quality and solid stainless steel version in CNS 18/10 is the ideal choice for modern professional kitchens with high standards. First-rate, flexible and high-performance.

Features

• Sub-counter unit type:	Leaf door
• Number of tanks:	1
• Material:	CNS 18/10
• Beaker capacity:	40 litre(s)
• Important information:	-
• Height adjustable:	900 mm to 950 mm
• Basin size, GN format:	1/1 GN
• Number of baskets:	-
• Height-adjustable feet:	Yes
• Properties:	Water supply and drain cock installed
• Type:	Upright unit
• Series:	900
• Operating mode:	Electro
• Not included in delivery:	Baskets
• Power load:	9,6 kW 400 V 50/60 Hz
• Equipment connection:	3 NAC
• Size:	W 400 x D 900 x H 900 mm

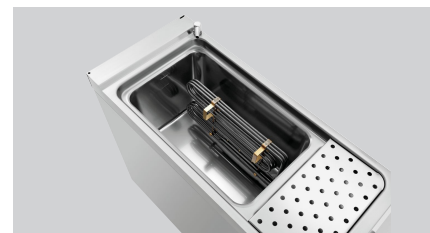
▶ Continue on the next page



- ▶ 1 tank
- ✓ Content: 40 litres



- ▶ Water supply
- ▶ Water outlet



- ▶ Simple operation: very large toggles with a good grip and legible labels

Electric pasta cooker, 1 basin

- Weight: 45.2 kg



Electric pasta cooker, 1 basin

Add on Products

Pasta basket 1/3 GN, length

CNS 18/10



- Size basket: W 145 x D 290 x H 205 mm
- Material: CNS 18/10 Plastic
- Important information: -
- Gastronorm: 1/3 GN
- Size: W 145 x D 510 x H 340 mm
- Weight: 1.2 kg

Code-No. 284124
GTIN 4015613677057

Pasta basket 1/3 GN

CNS 18/10



- Gastronorm: 1/3 GN
- Size basket: W 160 x D 290 x H 205 mm
- Material: CNS 18/10 Plastic
- Important information: -
- Size: W 160 x D 510 x H 335 mm
- Weight: 1.1 kg

Code-No. 284114
GTIN 4015613677064

Pasta basket 1/6 GN

CNS 18/10



- Gastronorm: 1/6 GN
- Size basket: W 140 x D 140 x H 205 mm
- Material: CNS 18/10 Plastic
- Important information: -
- Size: W 260 x D 260 x H 305 mm
- Weight: 0.73 kg

Code-No. 284117
GTIN 4015613677071

Swivel castors 4S900



- Swivel castors: 4 swivel castors, 2 with brake
- Diameter castors: 125 mm
- Load-bearing capacity max., each: 100 kg
- Material: Plastic Rubber coated
- Important information: -

Code-No. 295088
GTIN 4015613680804

Electric pasta cooker, 1 basin

Add on Products

Oil and grease remover F1L



- Content: 6 x 1 litre
- Model: Liquid
- HACCP compliant: Yes
- Chlorine-free: Yes
- Phosphate-free: Yes
- Including: -
- Order quantity unit: 1 box (6 bottles)

Code-No. 173276
GTIN 4015613761176

Kitchen rail 900-400

STAINLESS
STEEL



- Material: Stainless steel
- Load-bearing capacity max.: 15 kg
- Depth of surface: 60 mm
- Including: 1 drilling template
Attachment material
- Important information: Building kit
- Size: W 390 x D 95 x H 40 mm

Code-No. 295200
GTIN 4015613850252