

## KV1 Classic



**190052**

Bartscher GmbH  
Franz-Kleine-Str. 28  
D-33154 Salzkotten  
Germany

Phone: +49 5258 971-0

Fax: +49 5258 971-120

**Technical Support Hotline:** +49 5258 971-197

[www.bartscher.com](http://www.bartscher.com)



Version: 4.0

Date of preparation: 2020-05-12

---

## Original instruction manual

1	Safety .....	2
1.1	Explanation of Signal Words.....	2
1.2	Safety instructions.....	3
1.3	Intended Use .....	5
1.4	Unintended Use .....	6
2	General information .....	6
2.1	Liability and Warranty .....	6
2.2	Copyright Protection .....	7
2.3	Declaration of Conformity .....	7
3	Transport, Packaging and Storage .....	8
3.1	Delivery Check.....	8
3.2	Packaging .....	8
3.3	Storage .....	8
4	Technical Data.....	9
4.1	Technical Specifications .....	9
4.2	List of Components of the Appliance .....	11
4.3	Functions of the Appliance.....	13
5	Installation and operation .....	14
5.1	Installation.....	14
5.2	Operation .....	17
6	Cleaning and Descaling.....	25
6.1	Safety Instructions for Cleaning .....	25
6.2	Cleaning.....	25
6.3	Descaling.....	36
7	Possible Malfunctions.....	41
8	Disposal.....	42



**Read this instruction manual before using and keep it available at all times!**

This instruction manual contains information about installation, operation and maintenance of the appliance and constitutes an important source of information and reference guide. The knowledge of all operational and safety instructions included in this manual is a prerequisite for safe and proper handling of the appliance. Additionally, accident prevention, occupational health and safety, and legal regulations in force in the area the appliance is used apply.

Before you start using the appliance, especially before turning it on, read this instruction manual in order to avoid personal injuries and property damages. Improper use may cause damage.

This instruction manual forms an integral part of the product and must be stored in an immediate vicinity of the appliance and be available at all times. The instruction manual should be transferred together with the appliance.

## 1 Safety

EN

This appliance has been manufactured in accordance with technical standards currently in force. However, the appliance may be a source of hazards if used improperly or contrary to its intended purpose. All persons using the appliance must consider information included in this instruction manual and observe safety instructions.

### 1.1 Explanation of Signal Words

Important safety instructions and warning information are indicated in this instruction manual with appropriate signal words. You must strictly follow the instructions, to prevent accidents, personal injuries and property damages.



**DANGER!**

The signal word **DANGER** warns against hazards that lead to severe injuries or death if the hazards are not avoided.



### **WARNING!**

The signal word **WARNING** warns against hazards that may lead to moderate or severe injuries or death if the hazards are not avoided.



### **CAUTION!**

The signal word **CAUTION** warns against hazards that may lead to light or moderate injuries if the hazards are not avoided.

### **IMPORTANT!**

The signal word **IMPORTANT** indicates possible property damages, which may occur if safety instructions are not observed.

### **NOTE!**

The symbol **NOTE** indicates subsequent information and guidelines for the user on usage of the appliance.

## 1.2 Safety instructions

### Electrical Current

- Too high a mains voltage or incorrect installation may cause electric shock.
- The appliance may be connected only if data on the rating plate correspond with the mains voltage.
- To avoid short-circuit, the appliance should be kept dry.
- If there are malfunctions during operation, disconnect the appliance from the power supply.
- Do not touch the appliance's plug with wet hands.
- Never take hold of the appliance if it has fallen into water. Immediately disconnect the appliance from the power supply.
- Any repairs or housing opening may be carried out by professionals and relevant workshops only.
- Do not transport the appliance, holding it by the power cord.
- Do not allow the power cord to come into contact with heat sources or sharp edges.
- Do not bend, pinch nor knot the power cord.

- Always completely unwind the power cord.
- Never place the appliance or other objects on the power cord.
- Always take hold of the plug to disconnect the appliance from the power supply.

## Flammable Materials

- Never subject the appliance to contact with high temperature sources, e.g.: oven, furnace, open flame, heat generating devices, etc.
- To avoid fire hazard, clean the appliance regularly.
- Do not cover the appliance with, e.g., aluminium foil or cloths.
- Use the appliance only with materials designated to this end and with correct temperature settings. Materials, groceries and left-overs remaining in the appliance may catch fire.
- Never use the appliance near flammable or inflammable materials, e.g.: petrol, spirit, alcohol, etc. High temperature triggers evaporation of these materials, and, as a result of contact with sources of ignition, an explosion may occur.
- In case of fire, disconnect the appliance from the power supply before attempting suitable fire-extinguishing actions.
- Never attempt to extinguish fire with water if the appliance is connected to the power supply. Following extinction of fire, ensure sufficient fresh air inflow.

EN

## Hot Surfaces

- Surfaces of the appliance become hot during operation. Burning hazard! High temperature remains for some time after switching the appliance off.
- Do not touch any hot surfaces of the appliance. Use the provided handling elements and holders.
- You may transport and clean the appliance after it cools down entirely.
- It is prohibited to sprinkle hot surfaces with cold water or flammable liquids.

## Safety

---

### Health hazard due to germs!

- The water tank must be regularly emptied and disinfected to eliminate the possibility of accumulation of harmful and dangerous germs.

### Supervised Usage only

- Only supervised appliance may be used.
- Always remain in an immediate vicinity of the appliance.

### Operating Personnel

- The appliance may only be operated by qualified personnel and trained specialist personnel.
- This appliance may not be operated by persons (including children) with limited physical, sensory or mental capabilities, nor by persons with limited experience and/or limited knowledge.
- Children should be supervised to ensure that they are not playing with or switching on the appliance.

### Improper use

- Unintended or prohibited use may cause damage to the appliance.
- The appliance may only be used in a technically flawless condition, providing for safe use.
- The appliance may only be used with connections in a technically flawless condition, providing for safe use.
- The appliance may only be used clean.
- Use only original spare parts. Never attempt to repair the appliance on your own.
- Do not attempt to modify nor alter the appliance.

EN

## 1.3 Intended Use

As described below, every use of the appliance for a purpose differing and/or diverging from its intended standard use, is prohibited and considered to be an unintended use.

The following is an intended use:

- Preparation of various types of coffee beverages, for example: coffee, cappuccino, espresso, etc.

## 1.4 Unintended Use

An unintended use may lead to personal injuries or property damages caused by hazardous voltage, fire or high temperature. The appliance may only be used to perform tasks described in this instruction manual.

## 2 General information

### 2.1 Liability and Warranty

All information and instructions in this instruction manual account for legal regulations in force, current level of technical engineering knowledge as well as our expertise and experience, developed over the years. If special models or additional options are ordered, or state-of-the-art technical solutions were implemented, the actual scope of delivery of the appliance may, in some circumstances, differ from descriptions and numerous drawings in this instruction manual.

The manufacturer is not liable for any damages nor faults stemming from:

- failure to observe instructions,
- unintended use,
- technical alterations introduced by the user,
- usage of unapproved spare parts.

We reserve the right to introduce technical modifications to the product, intended for improvement of the appliance and its performance.

Our coffee makers are constructed with components that are subject to wear and tear. As a rule, with correct maintenance of coffee makers, the following components that are subject to wear and tear sustain dispensing of the following amounts of beverages:

- pumps: 12.000 dispensing instances
- drain valve: 15.000 dispensing instances
- brewing unit, grinder and seals: 20.000 dispensing instances

Failures of these components that are subject to wear and tear after their reaching reference dispensing amounts are not considered to be coffee maker flaw.



## 2.2 Copyright Protection

This instruction manual, and texts, drawings and images included in it, as well as its other components are copyright protected. It is prohibited to reproduce this instruction manual (including its excerpts), in any form and by any means, and to use and/or transfer its content to third parties without manufacturer's written permission. Violation of the above results in obligation to pay compensation. We reserve the right to claim further damages.

## 2.3 Declaration of Conformity

The appliance meets the currently applicable standards and guidelines of the European Union. We confirm the above in the EC Declaration of Conformity. We may provide relevant Declaration of Conformity upon request.

### 3 Transport, Packaging and Storage

#### 3.1 Delivery Check

Immediately upon reception, check the delivery for completeness and possible shipping damage. In the case of visible transport damage refuse to accept the appliance or accept it conditionally. Mark and note the scope of damage in shipping documents/consignment list of the shipping company and lodge a complaint.

Concealed damage must be reported immediately upon its discovery, as compensation claims may only be filed within applicable time limits.

If you find that parts or accessories missing, please contact our Customer Service Department.

#### 3.2 Packaging

Do not dispose of the appliance cardboard box. It may be used to store the appliance when relocating or when shipping the appliance to our service point in the case of any damages.

The packaging and its elements are made of recyclable materials. Particularly, these are: plastic films and bags, cardboard box.

EN

When disposing of the packaging, observe applicable domestic regulations. Recyclable packaging materials should be recycled.

#### 3.3 Storage

Leave the packaging closed until installation of the appliance; observe external indications concerning method of placing and storage. Store the packaging in the following conditions only:

- in closed rooms;
- in dry and dust-free surrounding;
- away from aggressive agents;
- in a location protected against sunlight;
- in a location protected against mechanical shocks.

In the case of extended storage (over three months), make sure you check the condition of the packaging and the parts regularly. If needed, replace the packaging with a new one.

## 4 Technical Data

### 4.1 Technical Specifications

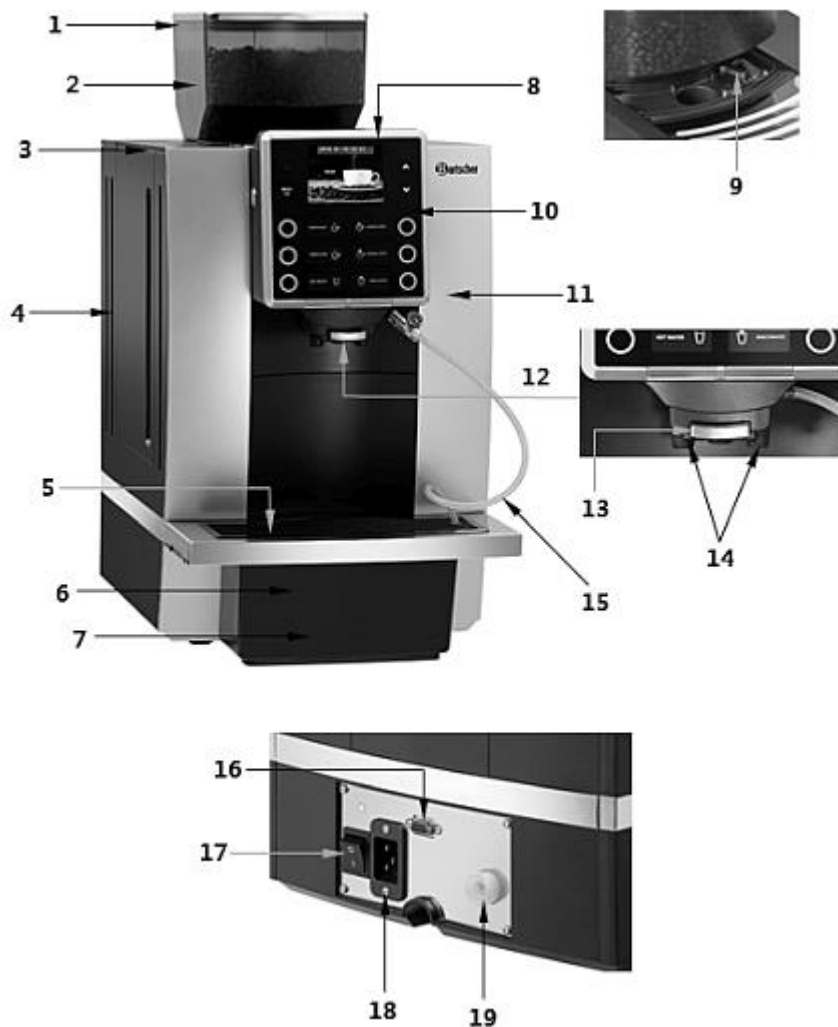
<b>Name:</b>	<b>Automatic coffee machine KV1 Classic</b>
Item No.:	<b>190052</b>
Material:	Plastic
Grinder material:	Steel
Number of brewing unit groups:	1
Water tank volume, in l:	1,8
Coffee container volume, in g:	1.000
Programs:	6
Pump pressure, in bar:	19
Outlet, height regulation, from – to, in mm:	100 - 160
Dregs container volume, no. of cups, approx.:	35
Designed for cups/day:	80
No. of cups of 120 ml/h, max.:	40
Minimum brewing volume, in ml:	25
Power supply:	2,7 kW / 230 V / 50-60 Hz
Dimensions (W x D x H) in mm:	305 x 330 x 580
Weight in kg:	17,4

We reserve the right to implement technical modifications!

## Version / Characteristics

- Fully automatic
- Control: electronic
- Descaling signal
- Fill level indicator
- ON/OFF switch
- Indicator light: ON/OFF
- Settable parameters: grinding coarseness with 5-level scale, coffee dosing, amount of water, water temperature
- Water supply: 2 options
  - Water tank
  - Fixed water supply ½"
- Detachable water tank
- Hot water function
- Hot milk function
- Grinder: conical burr grinder
- Pressure system: piston pressure
- Milk frother
- Cleaning program
- Programs: 6 with the possibility of individual settings
- Display: programs, status, error messages, maintenance messages
- Automatic switch-off
- Dregs container is dishwasher safe
- Ground coffee options: per cups, manually, 5–14 g
- 2 cups function
- Milk supply:
  - external via a hose
  - controlled flow rate (temperature regulation)
- Cup counter (per program and total)
- Base plate with a cut-out for automatic residue removal (in combination with KV1 dregs container with discharge opening — available as an option)
- The set includes: 1 milk hose, 50 cm; 1 milk hose with flow controller, 50 cm; 1 water supply hose, 150 cm

## 4.2 List of Components of the Appliance



EN

## Description of components

1. Coffee container cover
2. Coffee container
3. Water tank cover
4. Water tank
5. Drip grate
6. Dregs container
7. Drip tray
8. Grinder cover
9. Grinding coarseness adjustment knob
10. Control panel
11. Housing
12. Brewing unit
13. Hot water outlet
14. Coffee outlet
15. Milk hose with flow controller
16. Interface
17. Mains switch
18. Power cord socket
19. Water connection

## Control Panel

EN



1. ON/OFF button
2. 'Back' button
3. 'Menu / OK' button
4. ESPRESSO button
5. AMERICANO button
6. HOT WATER button
7. 'Up' button
8. 'Down' button
9. Display
10. CAPPUCCINO button
11. COFFEE LATTE button
12. MACCHIATO button

### Auxiliary equipment (not included in the delivery!)

	Description	Art. no.:
	<p><b>KV1 dregs container with discharge opening</b></p> <p>Designed for Bartscher KV1 Classic and KV1 Comfort automatic coffee machines</p> <p>Disposing of dregs directly into a waste bin</p> <p>Material: plastic</p> <p>Dimensions: W 80 x D 155 x H 160 mm</p> <p>Weight: 0.09 kg</p>	<p><b>190060</b></p>
	<p><b>KV1 water drain hose</b></p> <p>Designed for Bartscher KV1 Classic and KV1 Comfort automatic coffee machines</p> <p>Length 1.5 m</p> <p>Features: for use with dregs container and KV1 dregs container with discharge opening.</p> <p>Dimensions: W 35 x D 1,500 x H 40 mm</p> <p>Weight: 0.37 kg</p>	<p><b>190068</b></p>

### 4.3 Functions of the Appliance

The appliance is designed for preparing various coffee beverages, for example: coffee, espresso, cappuccino, or latte macchiato, with the use of coffee beans and cold water, and it is ideal for cafés, cafeterias and offices.

## 5 Installation and operation

### 5.1 Installation

#### Unpacking / Positioning

- Unpack the appliance, remove all external and internal packaging elements and shipment safeguards.



#### CAUTION!

##### Choking hazard!

Prevent children from accessing package materials, for instance: plastic bags and EPS.

- If the appliance is covered with a protective film, remove it. Remove the film slowly, so no glue residues are left. Remove any glue residues with the use of a suitable solvent.
- Be careful not to damage the rating plate and warning labels fixed on the appliance.
- **Never** place the appliance in humid or wet environment.
- Place the appliance in a way making the connections easily accessible, so that they may be quickly disconnected if such a need arises.
- The appliance should be placed on surfaces that are:
  - even, with sufficient bearing capacity, resistant to water, dry and resistant to high temperatures;
  - sufficiently large, and thus enabling usage of the appliance with no problems;
  - easily accessible;
  - well ventilated.
- Maintain sufficient clearance from table edges. The appliance might turn over and fall down.
- Mind the sufficient clearance from the walls and other flammable objects or objects that are prone to discolouration. This clearance must be at least 5 cm from the back and both sides, and 15 cm from the top. Note the fire safety provisions at the place of installation.
- When in operation, the appliance may not be installed in a cabinet.



## Installation and operation

---

### Power supply connection

- Verify if technical data of the appliance (see rating plate) correspond with the local electric power grid specification.
- Connect the appliance to a single, properly grounded mains socket with protective contact. Do not connect the appliance to a multi-socket.
- The power cord should be laid in a way preventing anyone from threading on it or tripping against it.
- Do not use the appliance with an external timer or remote control.

### Water connection

For the water supply, the appliance comes with a factory-installed water tank. Should such a need arise, the appliance can be connected to mains piping. In order to utilise the connection, consider the following information:

- max. input water pressure is 3 bar
- min. input water pressure is 1 bar

#### **Important Indication:**

**Starting with water hardness of 5° dH (German degrees), a water softening device should be installed. We recommend the following products from our range:**

- Water filtering system for coffee makers, art. No. **109881**
- Water softening device, WEH1350, art. No. **109878**

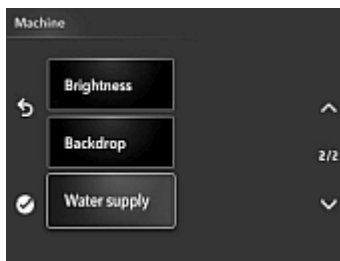
To supply the appliance from water mains system, perform the following steps:

### Step 1: Connecting the water hose



1. Connect one end of the delivered water supply hose (with 1/4" thread) to the water connection stub at the back face of the appliance, and the second end (with 1/2" thread) with the water mains system connection.

### Step 2: Setting the water supply mode



1. Press the 'MENU / OK' button and hold it for 3 seconds, and with the '^' and 'v' setting buttons select the 'Machine' option. Confirm the selection with 'MENU / OK' button.
2. Using the '^' and 'v' setting buttons, select 'Water supply'.
3. Confirm the selection with 'MENU / OK' button.



4. Select the 'Tap water' option.
5. To end with and save the settings, press the 'MENU / OK' button.
6. Then, press the 'Back' button, to leave the menu.

### Step 3: Open the water mains system tap

## 5.2 Operation

### Important indications

- Fill the water tank solely with fresh potable water.
- Never fill the water tank with warm/hot water, milk nor any other liquid.
- Never fill the coffee container (ground coffee container) any instant coffee, cocoa nor any other powder mixtures. The appliance might get damaged.
- Never fill the coffee container with specially prepared coffee beans (e.g. coated with cocoa or sugar), as this might cause damage to the appliance.
- The coffee container may be filled only with roasted coffee beans. Rice, soy beans, cocoa beans, nuts, sugar, spices, etc., are prohibited.
- Always store coffee beans in dry, shaded place. Humid beans may damage the grinder.
- Do not keep coffee beans in the coffee container if the appliance is not to be used for a longer period of time. Coffee beans may attract humidity and clog the grinder.

### Preparation of the appliance

1. Before use, clean the appliance, observing instructions in section '**Cleaning**'.
2. To safely start up the appliance, read the following indications carefully.
3. Fill the water tank with fresh drinking water.
4. Mind the filling level. It may not exceed the MAX marking.
5. Fill the coffee container with coffee beans.

### Appliance start-up

1. Plug the appliance into a suitable single socket.
2. Set the mains switch at the back of the appliance to 'I'.
3. Press the ON/OFF switch at the left side of the control panel to activate the appliance.

With first use, the coffee machine performs an auto-test and cleaning. This helps the appliance to achieve better working conditions. This process cannot be omitted.

#### **WARNING! Risk of burns!**

**During the cleaning process, hot water flows from the coffee outlet onto the drip tray.**

Avoid contact with the outflowing hot water.

4. Prior the next operation, make sure the appliance is in the **'Ready'** mode.

### Program setting

1. Make sure the 'Ready' message is shown on the display, and then press and hold the 'MENU / OK' button for 3 seconds.



2. Then, select the program setting menu.
3. Use the '^' and 'v' setting buttons, and keep them pressing to select from amongst various setting options:
  - maintenance settings;
  - beverage settings;
  - appliance settings, etc.
4. To save a setting, press 'MENU / OK' button.
5. Then, press the 'Back' button, to leave the menu.

## Installation and operation

### Language setting

1. If needed, set the language.
2. Press and hold the 'Menu / OK' button for 3 seconds to move to the program menu.



3. In the program menu, use '∧' and '∨' setting buttons, and keep pressing them to select 'Machine' option and use 'MENU / OK' button to confirm the selection.
4. Use '∧' and '∨' setting buttons, and keep pressing them to select 'Language' option and use 'MENU / OK' button to confirm the selection.



5. Now, use '∧' and '∨' setting buttons, and keep pressing them to select the language and use 'MENU / OK' button to confirm the selection.
6. Then, press the 'Back' button, to leave the menu. The appliances switches to the 'Ready' mode.

### Water hardness setting



1. Press the 'MENU / OK' button and hold it for 3 seconds, and with the '^' and 'v' setting buttons select the 'Machine' option. Confirm the selection with 'MENU / OK' button.
2. Use '^' and 'v' setting buttons, and keep pressing them to select 'Water hardness' option and use 'MENU / OK' button to confirm the selection.



3. Now, use '^' and 'v' setting buttons, and keep pressing them to select the water hardness level in the local water mains system and use 'MENU / OK' button to confirm the selection.
4. Then, press the 'Back' button, to leave the menu.

EN

### Grinding coarseness setting

1. The coarseness of the ground coffee must be adapted to the selected coffee beans.

**NOTE: The grinding coarseness may only be set when the appliance is not preparing any beverages.**

2. Open the grinder cover. It is found before the coffee container.

Use the adjustment knob to set the selected grinding coarseness from 'fine' (grinding level 1) to 'coarse' (grinding level 5). The grinder is factory-set to level 3.



3. If during preparation the coffee flows very slowly or does not flow out completely, set the grinding coarseness to 4 or 5.
4. If the ground coffee is dark, we recommend higher coarseness settings: 4 or 5.

The changes to the grinding coarseness will only be noticeable after 2 or more fresh cups of coffee are brewed.

### Preparing beverages

The appliance may still contain coffee ground during factory testing, hence the first 2–3 cups after start-up should not be drunk.



1. Select the beverage by pressing the button with the required symbol.
2. Use the '∧' and '∨' setting buttons to select subsequent options, e.g. amount per cup, etc.

This setting is not stored.

3. Press the 'Back' button, to interrupt the beverage preparation.

### Appliance parameters settings



1. Press the 'MENU / OK' button and hold it for 3 seconds, and with the '^' and 'v' setting buttons select the 'Beverage' option.
2. Confirm the selection with 'MENU / OK' button.



3. Then, using the '^' and 'v' setting buttons, select 'Parameter'.
4. Confirm the selection with 'MENU / OK' button.

The following beverage parameters may be set or changed:

- Coffee strength
- Coffee amount
- Coffee temperature
- Pre-brewing
- Hot water volume
- Hot water temperature
- Milk time in seconds
- Cream time in seconds
- Simultaneously poured coffee + milk / frothed milk



5. Change the required parameters and confirm with the 'MENU / OK' button.



### Preparation of Cappuccino / Coffee Latte / Macchiato



1. Connect firmly the milk hose with the milk frother and the milk container.
2. Place a cup under the coffee outlet and press, for example, the 'CAPPUCCINO' symbol to prepare the selected beverage.

When the 'Beverage ready' message is displayed, it means that cappuccino is ready.

### Multi cups / milk / cream



1. Press the 'A' setting button to select one of the options: 'Multi Cups', 'Hot milk/cream'.
2. Using the 'A' and 'V' setting buttons, select the number of cups.
3. Select the type of the beverage: 'Milk' or 'Cream'.

When the beverage is ready, the 'Beverage ready' message is shown on the display.

Finally, the 'Ready' message appears at the display.

EN

### Milk temperature control

The milk temperature for coffee beverages with milk may be adjusted with the use of milk hose, by increasing or decreasing the flow rate.

1. Depending on the required milk temperature, set the knob on the milk hose by turning it between L (low) and H (high) position.



### Preparing beverages with ground coffee function

The coffee machine is equipped with a function that makes it possible to prepare coffee with the use of ground coffee.

#### NOTE:

**To prepare coffee with the ground coffee function, the amount of the ground coffee used must be 5 - 14 g. Additionally, the coffee must be coarsely ground to avoid clogging of the brewing unit.**



1. Press the 'V' setting button on the control panel as long as the 'Use powder' message appears on the display.
2. Confirm the selection with 'MENU / OK' button.



3. Open the grinder cover.
4. Fill the basin with the required amount of coarsely ground coffee.
5. Then press the 'MENU / OK' button.



The display shows the 'Select coffee' message.



6. Select the beverage by pressing the button with the required symbol.

## 6 Cleaning and Descaling

### 6.1 Safety Instructions for Cleaning

- Before cleaning, disconnect the appliance from the power supply.
- Leave the appliance to cool down completely.
- Make sure water does not enter the appliance. Do not immerse the appliance in water or other liquids during cleaning. Do not clean the appliance with a pressurized water jet.
- Do not use any sharp or pointed, nor metal implements (knife, fork, etc.). Sharp or pointed implements may damage the appliance, and when in contact with live parts, they may cause electric shock.
- For cleaning, do not use any scouring agents that contain solvents nor corrosive cleaning agents. They may damage the surface.

EN

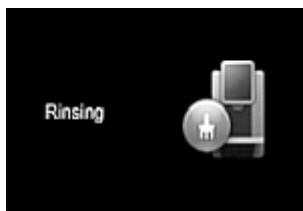
### 6.2 Cleaning

As a rule, continuous hygiene in everyday work may be guaranteed only when the appliance is cleaned daily.

We recommend performing complete cleaning after approx. 180 brewing process or after 80 rinsing cycles. Also, the dregs container and the drip tray should be cleaned regularly.

Both rinsing functions specified below are used for fast superficial cleaning of the appliance, lasting 30 seconds. For thorough cleaning, we recommend using cleaning programs that are available in 'Maintenance' menu.

### Rinsing of the brewing unit



1. Press and hold the 'MENU / OK' button for 3 seconds.
2. Use '^' and 'v' setting buttons, and keep pressing them to select 'Rinse brew unit' option and use 'MENU / OK' button to confirm the selection.

The rinsing of the brewing unit lasts for approx. 30 seconds.

EN

### Rinsing of the milk system



1. Use '^' and 'v' setting buttons, and keep pressing them to select 'Rinse milk system' option and use 'MENU / OK' button to confirm the selection.

The rinsing of the milk system lasts for approx. 30 seconds.

## Cleaning and Descaling

### Cleaning the brewing unit

After a longer period of use, some ground coffee will build up in the brewing unit. Remove the remaining ground coffee, cleaning the brewing unit thoroughly. Use the right cleaning tablets to clean the brewing unit. The cleaning process of the brewing unit lasts approx. 20 minutes.



1. Press and hold the 'Menu / OK' button for 3 seconds to move to the program menu. Use '^' and 'v' setting buttons, and keep pressing them to select 'Maintenance' option and use 'MENU / OK' button to confirm the selection.
2. Use '^' and 'v' setting buttons, and keep pressing them to select 'Brew unit' option and use 'MENU / OK' button to confirm the selection.



- Right after pressing of the 'Brew unit' option, there is information displayed.
3. Press the 'MENU / OK' button to start cleaning.

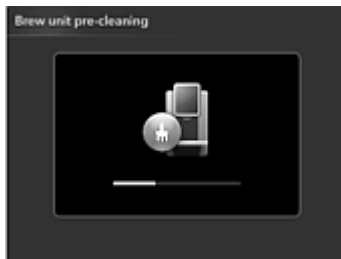
4. Remove the drip tray and empty it.



5. Reinsert the drip tray in the appliance.



6. Press the 'MENU / OK' button to continue.



The 'Pre-cleaning' message will appear on the display.



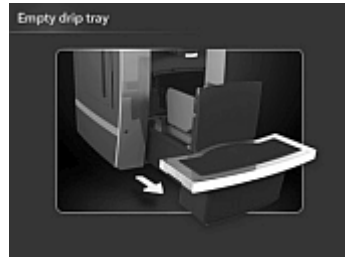
7. Open the grinder cover and insert cleaning tablets.
8. Close the cover and press 'MENU / OK' button to confirm.

When the brewing unit cleaning process is finished, the appliance switches to the 'Ready' mode.

## Cleaning and Descaling



The brewing unit cleaning process is executed.



9. Remove the drip tray and empty it.



10. Reinsert the drip tray in the appliance.



The brewing unit cleaning process is finished.



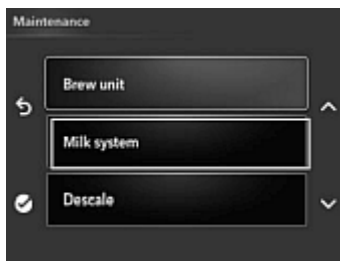
The appliance is re-heated.



When the brewing unit cleaning process is finished and the appliance is re-heated, it switches to the 'Ready' mode.

### Cleaning the milk system

1. In a separate container, prepare a solution of water and commercially available cleaning agent for milk systems/milk frothers. Observe indications on the packaging of the agent.
2. Remove the milk hose from the water container or from the milk hose opening in the drip grate and introduce it to the container with milk system cleaning agent solution.



3. Press and hold the 'Menu / OK' button for 3 seconds to move to the program menu.
4. Use '^' and 'v' setting buttons, and keep pressing them to select 'Maintenance' option and use 'MENU / OK' button to confirm the selection.
5. Use '^' and 'v' setting buttons, and keep pressing them to select 'Clean milk system' option and use 'MENU / OK' button to confirm the selection.

EN



The display will show the above information.

6. Press the 'MENU / OK' button to start the milk system cleaning.

7. Press again the 'MENU / OK' button to continue cleaning.



## Cleaning and Descaling



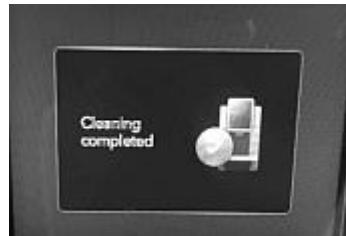
8. The milk system cleaning is executed.



9. Fill the container with fresh potable water and press the 'MENU / OK' button to continue rinsing.



The milk system is rinsed.



The milk system cleaning is finished.



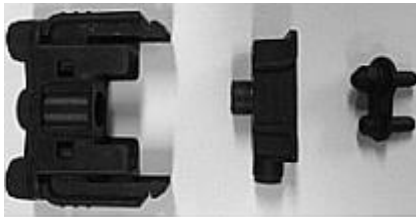
10. Remove the milk hose from the rinse water container and introduce it into the opening in the drip grate. When the milk system cleaning process is finished, the appliance switches to the 'Ready' mode.

### Cleaning the milk frother



1. The milk frother should be cleaned daily.
2. Press it simultaneously at both sides and carefully remove from the appliance.
3. Remove the milk hose from the milk frother.

EN



4. Disassemble the milk frother as indicated in the picture above.
5. Components of the milk frother should be washed under warm running water.

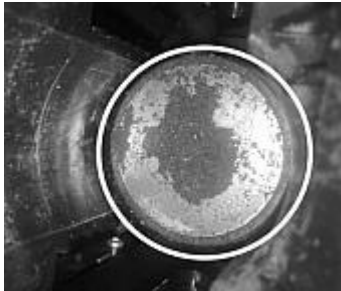


6. Wash the milk hose carefully under running water, allowing water to run also through the milk hose.
7. Reassemble the milk frother and reinstall it in the appliance.
8. Secure the milk hose on the milk frother.

### Cleaning the metal filter

**NOTE:**

**In order to secure full cleaning, we recommend to clean the metal filter, when all other cleaning processes are executed.**



After a longer period of use, the residues of ground coffee may remain in the metal filter of the brewing unit. They should be removed regularly.

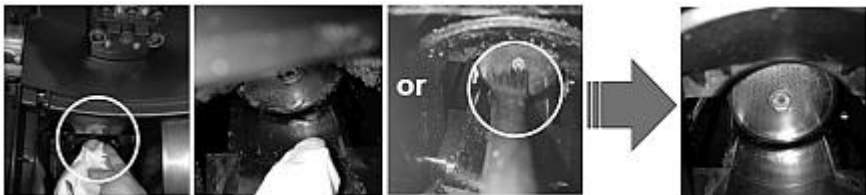
If these residues are not removed on time, this may lead to build up of too high a pressure.

EN

1. Switch the appliance off and disconnect it from the power supply.

**NOTE:**

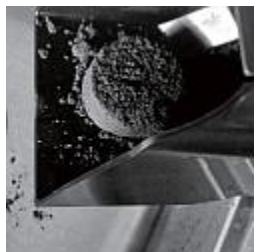
**Remove the drip tray and the dregs container from the appliance.**



2. Clean the metal filter manually, using a soft cloth or a soft brush and inserting it carefully through the front opening.
3. When the filter is clean, reinsert the drip tray and the dregs container into the appliance.
4. Restart the appliance, observing indications in 'Starting the Appliance' sections.

### Cleaning the drip tray and the dregs container

- Do not use chemical solutions neither caustic cleaning agents nor alcohol to clean the dregs container and the drip tray.
- Do not use any metal objects to remove soilings or dregs, to avoid damaging the dregs container and the drip tray.
- If the need to clean the dregs container arises, the cleaning process must be executed, as otherwise the appliance may be damaged.
- Proceed the following way during cleaning:



EN

After preparation of 35 cups of coffee, the display will show the 'Empty the dregs container' message.

1. Remove the drip tray.
2. The dregs container may be removed for cleaning as shown in the picture to the right.
3. Empty the dregs container and the drip tray.
4. Wash both containers with warm water and reinsert them in the appliance.

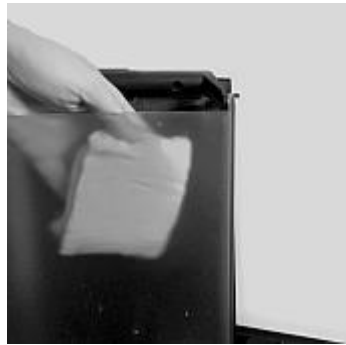
When the drip tray is full, the display shows the 'Drip tray full' and 'Empty the drip tray' messages.

7. Remove the drip tray and empty it.
8. Wash the drip tray and drip grate with warm water.
9. Reinstall the removed elements after cleaning.

## Cleaning and Descaling

### Cleaning the water tank

1. Remove the water tank.
2. Wash the water tank thoroughly each time it is filled with water.
3. Then, fill the water tank with fresh potable water and reinstall it in the appliance.
4. The water tank should always be removed very carefully; never let it fall. Should the water tank get damaged, it must be replaced immediately.



### Cleaning the Coffee Container

1. Remove the coffee container cover carefully.
2. Always clean the coffee container with a dry cloth or a paper towel.
3. Reinsert the cover.
4. Never allow the coffee container cover to fall. Should the cover get damaged, it must be replaced.



### 6.3 Descaling

In the course of daily use of the appliance, depending on the local water hardness, limescale may build up inside the appliance components. In order to maintain the appliance in top condition, and in order to be certain that every brewing process yields the best results, the appliance should be descaled from time to time.

1. Use only appropriate tablets for coffee machines for cleaning and descaling.
2. During descaling, always strictly observe manufacturer's indications concerning safety, found on the package of the agent.

#### **WARNING!**

**If, accidentally, the descaling agent comes into contact with eyes or skin, rinse them immediately with fresh water.**

3. Always execute the descaling process in full; interrupting it may cause damage to the appliance.

The entire descaling process lasts approx. 40 minutes.

EN



If after a certain period of time, a certain level of deposits is reached, the display will start showing, alternately, the following messages: 'Run descale' or 'Press rinse'.

4. In the program menu, select 'Maintenance'.

5. Select the 'Descale' option and confirm with 'MENU / OK' button.
6. Press the 'MENU / OK' button again to commence descaling.

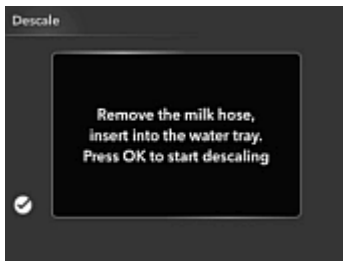
## Cleaning and Descaling



7. Remove the drip tray and empty it.



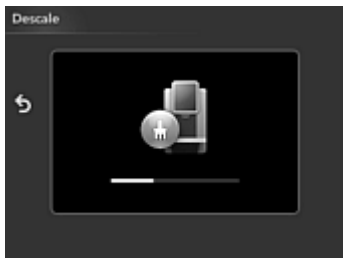
8. Reinsert the drip tray in the appliance.



9. Remove the milk hose from the drip grate. Press the 'MENU / OK' button to commence descaling.



10. Dissolve the descaling agent completely in 1,000 ml of clean water, pour the solution in the water tank and reinstall the water tank.



The descaling is executed.



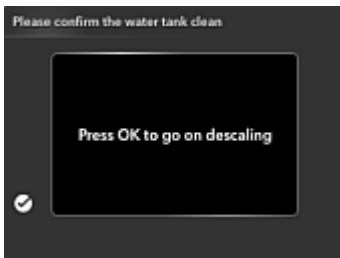
11. Remove the drip tray and empty it.



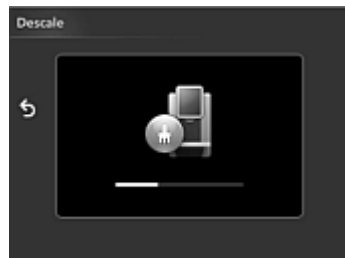
12. Reinsert the drip tray in the appliance.



13. Remove the water tank and clean it thoroughly.  
14. Fill the water tank with fresh potable water and reinstall it in the appliance.



15. Press the 'MENU / OK' button to continue descaling.



The descaling is continued.



The descaling is finished.



The appliances switches to the 'Ready' mode.



### Transporting the appliance

1. Keep the packaging of the coffee machine for subsequent transportation.
2. Make sure the water is removed from the appliance before transporting it to prevent damage to the appliance.

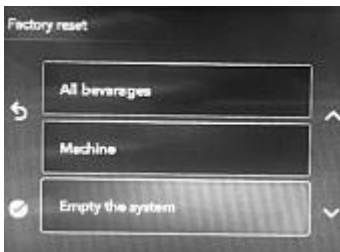
#### **WARNING! Risk of burns!**

**When emptying the water supply hose, hot water may flow from the coffee outlet onto the drip tray.**

Avoid contact with the outflowing hot water.



3. Press and hold the 'MENU / OK' button for 3 seconds.
4. Use '∧' and '∨' setting buttons, and keep pressing them to select 'Machine' option and use 'MENU / OK' button to confirm the selection.
5. Use '∧' and '∨' setting buttons, and keep pressing them to select 'Factory reset' option and use 'MENU / OK' button to confirm the selection.



6. Use '∧' and '∨' setting buttons, and keep pressing them to select 'Empty the system' option and use 'MENU / OK' button to confirm the selection.
7. Close the mains water system supply (close the water tap) or remove the water tank from the unit.



8. Press the 'MENU / OK' button.

The water system is emptied.

Then, the appliance begins automatically to clean the water supply hose. After the water system is emptied, the appliance switches off automatically.

9. After it switches off, remove the drip tray, and then empty and clean it.

10. After the water supply hose is cleaned, wipe the appliance carefully.

11. When re-starting the appliance, perform all the steps described in sections 'Preparation of the appliance' and 'Starting the appliance'.

## 7 Possible Malfunctions


The table below contains descriptions of possible causes and solutions to malfunctions or errors during operation of the appliance. When malfunction cannot be removed, contact the technical service.

<b>Display Message</b>	<b>Cause</b>	<b>Solution</b>
<b>Empty the drip tray</b>	The drip tray is full, and the beverage preparation functions are not operating	Remove the drip tray, empty it and reinstall it in the appliance
<b>Empty the dregs container</b>	The dregs container is full, and the beverage preparation functions are not operating	Remove the dregs container, empty it and reinstall it in the appliance
<b>Fill the water tank</b>	The water tank is empty, and the beverage preparation functions are not operating	Fill the tank with fresh potable water
<b>Fill with coffee beans</b>	The coffee container is empty, and the beverage preparation functions are not operating	Fill the coffee container with coffee beans
<b>Install the drip tray</b>	The drip tray is removed, and the beverage preparation functions are not operating	Install the drip tray in the appliance correctly
<b>System empty</b>	Not enough water in the appliance water supply hose, and the beverage preparation functions are not operating	Press the 'OK' button, to confirm

Display Message	Cause	Solution
<b>Error codes 1–7</b>	Errors cannot be defined	Switch the appliance off and switch it back on If the problem persists, pull the plug out and contact the service company
<b>High pressure</b>	The used coffee beans are too dark or the coffee is ground too finely	Set the coarser grinding level of 4–5 or use a coarsely ground coffee
	Brewing unit filter clogged	Run the cleaning program for the brewing unit
<b>Brewing unit error</b>	Internal component error	Restart the appliance

## 8 Disposal

### Electrical Appliance

	<p>Electric appliances are marked with this symbol. Electrical appliances must be disposed of and recycled in a correct and environmentally friendly manner. You must not dispose of electric appliances with household waste. Disconnect the appliance from the power supply and remove power cord from the appliance.</p>
--	---

Electrical appliances should be returned to designated collection points.