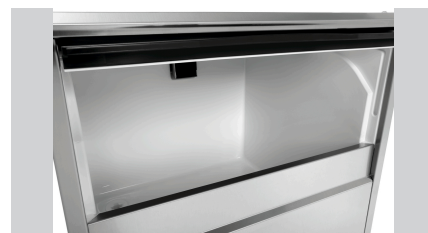


## Ice-Flake Maker F 130



- ▶ Ice flake production: 130 kg / 24 hours
- ▶ Storage tank: 18 kg

### Description

The high-performance ice flake maker is ideal for presenting food on fresh food counters or buffets.

### Features

• Water outlet:	Ø 20 mm
• Power load:	0,49 kW   230 V   50 Hz
• Properties:	-
• Control lamp:	yes
• ON/OFF switch:	Yes
• Can be fitted below the counter:	Yes
• Can be installed:	Yes
• Water connection:	3/4"
• Climate class:	T
• Coolant:	R290 / 0,070 kg
• Cooling:	Air cooled
• Filling level sensor:	Yes
• Storage container capacity:	18 kg
• Production max.:	130 kg / 24 h
• Including:	1 ice shovel
• Important information:	Clearance to all sides at least 15 cm
• Height-adjustable feet:	Yes

▶ Continue on the next page

## Ice-Flake Maker F 130

- Height adjustable: 794 mm to 814 mm
- Material: CNS 18/10  
Plastic  
Steel  
Galvanised
- Colour: Silver  
Grey
- Production by means of: Vertical evaporator system
- Control unit: Touch
- Size: W 500 x D 600 x H 695 mm
- Weight: 52.5 kg



## Ice-Flake Maker F 130 Add on Products

### Stainl.steel polish.spray 500ml can



- Content / can: 500 ml
- Application: Remove heavy soiling such as grease residue first  
Do not spray onto hot surfaces
- allow them to cool down first:

Code-No. 173031  
GTIN 4015613360195

### Partial desalination system TKD 13400 FB



- Desalination type: Partial desalination
- Water connection: 3/4"
- Material: Plastic  
Glass-fibre reinforced
- Sampling tap: Yes
- Colour: Blue
- Important information: -

Code-No. 109878  
GTIN 4015613681597