

Cutting board PRO 32x26 R-R



Description

A focus on hygiene with the chopping board series PRO in 32 x 26 cm format – differently coloured chopping boards for the different food groups. This HACCP-compliant red chopping board is designed for chopping red meat such as beef, pork and game.

Features

• Juice groove:	yes
• Colour:	Red
• Material:	Polyethylene
• Stopper edge:	No
• Properties:	Taste and smell-neutral Gentle on blades Food-safe Dishwasher-suitable HACCP compliant Shock and cut-proof 4 rubber feet, anti-slip
• Important information:	-
• Cutting surface:	290 x 225 mm
• Including:	-
• Board thickness:	20 mm
• Size:	W 325 x D 265 x H 25 mm
• Weight:	1.59 kg



▶ A focus on hygiene – chopping board series PRO

✓ Chopping boards in different colours to indicate the different food groups



▶ Red chopping board

✓ For red meat such as beef, pork and game

✓ Chopping surface: 290 x 225 mm



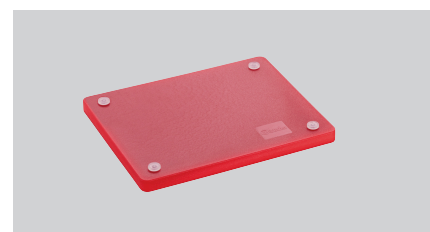
▶ Board thickness: 20 mm

✓ Dishwasher-safe

▶ With juice rim

✓ Food-safe

✓ HACCP-compliant



▶ Four rubber feet

✓ Anti-slip

