

Convection baking oven MC6040-8



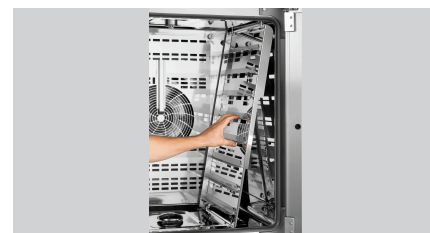
Description

Ideal cooking space climate in the convection oven: The crispy, freshly baked goods are particularly successful thanks to the optimal air circulation created by the really rapid fan direction change in the baking chamber. 99 programs, 6 baking phases and 6 parameters ensure a time-saving and uncomplicated workflow.

Features

- Material baking chamber: Stainless steel
- Material: Stainless steel
- Heating type: Convection
- Important information: The LBO10 installation kit is required for individual device operation (the corresponding installation kit must be selected for the combined device configuration)
Upstream connection of a water softener is always required
A pressure reducer is required from a water pressure of 3,5 bar
- Format drawers: 600 x 400 mm
- Type of drawers: Crosswise
- Number of drawers: 8
- Distance between trays: 90 mm
- Temperature range to: 250 °C
- Temperature control: In 1 °C steps
- Heating output: 15 kW
- Number of programs: 15 pre-installed programs
84 programmable
manually adjustable program

▶ Continue on the next page



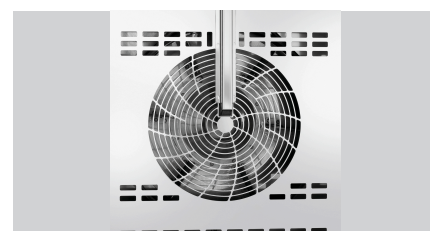
▶ 8 shelves 600 x 400 mm



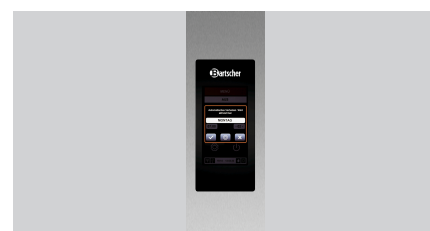
- ▶ 99 programs
- ▶ 6 baking phases
- ▶ 6 parameters



▶ Steam generators: Direct injection



- ▶ Fan speed
- ✓ 10 stages



▶ Automatic switch-on via timer

▶ With cleaning system

Convection baking oven MC6040-8



- Number of baking phases: 6
- Parameters per baking phase:
 - Baking temperature
 - Baking time
 - Steaming intensity
 - Fan speed
 - Vapour extractor
 - Pre-heating
- Steaming:
 - Set in the program
 - Manual
 - Direct injection
- Steam generators: No
- AirFresh box: No
- Time setting: 1 to 99 minutes
- Automatic switch-on via timer: Continuous operation
- Automatic pre-heating: Manual baking time extension
- Automatic cooling: Yes
- Fan speed: Yes
- With cleaning system: 10 levels
- Number of fans: Yes
- Reversing motor direction: 1
- USB connection: Yes
- Water connection: Yes
- Interior lighting: R3/4"
- Control unit: In the door
- Display: LED
- Series: Touch
- Equipment connection: Date and time
- Properties: LCD, 7 inches
- Including: Programs
- Power load: Cleaning
- Size: Timer settings
- Weight: MC
- Including: 3 NAC
- Power load: Bearing rails and rear wall can be detached
- Size: Double-winged door pane
- Weight: Consistent results when the baking chamber is full
- Including: Fan stop after steaming process
- Power load: Programs from other devices can be imported
- Size: Programs with all parameters can be copied within the menu
- Weight: Fast change of fan direction
- Including: -
- Power load: 15,9 kW | 400 V | 50/60 Hz
- Size: W 980 x D 840 x H 1,025 mm
- Weight: 152 kg

Convection baking oven MC6040-8

Add on Products

Oven gloves 300



- Properties: With flame protection
With hanger
Fabric density: 640 g/m²
- Material: Cotton 100 % (exterior)
- Colour: Black
- Important information: Do not wash to maintain flame protection
- Can be washed: No

Code-No. A500510
GTIN 4015613735467

Oven gloves 370



- Properties: With flame protection
With hanger
Fabric density: 640 g/m²
- Material: Cotton 100 % (exterior)
- Colour: Black
- Important information: Do not wash to maintain flame protection
- Can be washed: No

Code-No. A500511
GTIN 4015613735474

Oven gloves 420



- Properties: With flame protection
With hanger
Fabric density: 640 g/m²
- Material: Cotton 100 % (exterior)
- Colour: Black
- Important information: Do not wash to maintain flame protection
- Can be washed: No

Code-No. A500512
GTIN 4015613735481

Oven gloves 600



- Properties: With flame protection
With hanger
Fabric density: 640 g/m²
- Material: Cotton 100 % (exterior)
- Colour: Black
- Important information: Do not wash to maintain flame protection
- Can be washed: No

Code-No. A500513
GTIN 4015613735498

Convection baking oven MC6040-8

Add on Products

Installation kit LBO10



- Material: Stainless steel
Rubber
Plastic
- Important information: -

Code-No. 117922
GTIN 4015613771755

Power cleaner F1L, set of 2



- Designed for: Stubborn dirt, especially in kitchens
Grill and combi steamer cleaning (without cleaning system)
- Content: 2 x 1 litre
- Model: Liquid
High concentrate
- Ph level: 13,5

Code-No. 173078
GTIN 4015613731926

Intensive power cleaner F1L



- Order quantity unit: 1 box (6 bottles)
- Content: 6 x 1 litre
- Model: Liquid
- HACCP compliant: Yes
- Chlorine-free: Yes
- Phosphate-free: Yes

Code-No. 173280
GTIN 4015613761183

Stainl.steel polish.spray 500ml can



- Content / can: 500 ml
- Application: Remove heavy soiling such as grease residue first
Do not spray onto hot surfaces
- allow them to cool down first:

Code-No. 173031
GTIN 4015613360195

Convection baking oven MC6040-8

Add on Products

Base frame LBO6040-5

STAINLESS
STEEL

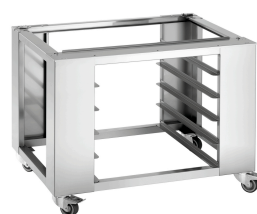


- Material: Stainless steel
- Height-adjustable feet: No
- Format drawers: 600 x 400 mm
- Base shelf: No
- Number of drawers: 5
- Important information: Designed for: Convection ovens MC, convection ovens HC, deck oven CL6040-1

Code-No. 117930
GTIN 4015613796413

Base frame LBO6040-4

STAINLESS
STEEL

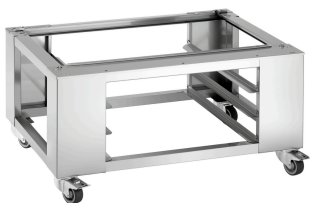


- Format drawers: 600 x 400 mm
- Height-adjustable feet: No
- Material: Stainless steel
- Number of drawers: 4
- Base shelf: No
- Important information: Designed for: Convection ovens MC, convection ovens HC, deck oven CL6040-1

Code-No. 117931
GTIN 4015613769967

Base frame LBO6040-3

STAINLESS
STEEL



- Format drawers: 600 x 400 mm
- Height-adjustable feet: No
- Material: Stainless steel
- Number of drawers: 3
- Base shelf: No
- Important information: Designed for: Convection ovens MC, convection ovens HC, deck oven CL6040-1

Code-No. 117932
GTIN 4015613796420

Installation kit LBO30



- Material: Stainless steel
Rubber
Plastic
- Important information: -
- Estimated delivery time from our warehouse in Salzkotten, Germany is week: 31 / 2022

Code-No. 117935
GTIN 4015613796406

Convection baking oven MC6040-8

Add on Products

Guiding rails MCHC6040-10

STAINLESS
STEEL



- Format drawers: 600 x 400 mm
- Number of drawers: 10
- Material: Stainless steel
- Important information: -
- Estimated delivery time from our warehouse in Salzkotten, Germany is week: 31 / 2022

Code-No. 117921
GTIN 4015613769943

Rolling base MCHC2300

STAINLESS
STEEL



- Height-adjustable feet: No
- Material: Stainless steel
- Base shelf: No
- Important information: Designed for: Convection ovens MC, convection ovens HC
- Colour: Silver

Code-No. 117939
GTIN 4015613804903

Condensation hood LBO800



STAINLESS
STEEL



- Number of fan motors: 2
- Flame protection filter: No
- Number of filters: 0
- Material filter: -
- ON/OFF switch: No
- Important information: -
- Assembly type: Top of appliance

Code-No. 117940
GTIN 4015613769974

Baking tray 600x400-AL



- Bakery norm: 600 x 400 mm
- Edge: 3 sides
- Silicone coating: No
- Material thickness: 1,5 mm
- Perforation: No
- Temperature resistant to: 260 °C
- Material: Aluminium

Code-No. 100412
GTIN 4015613734699

Convection baking oven MC6040-8

Add on Products

Perforated tray 600x400-AL



- Diameter perforation: 3 mm
- Bakery norm: 600 x 400 mm
- Edge: 3 sides
- Silicone coating: No
- Material thickness: 1,5 mm
- Perforation: Yes
- Temperature resistant to: 260 °C

Code-No. 100413
GTIN 4015613734705

Perforated tray 600x400-SI



- Diameter perforation: 3 mm
- Bakery norm: 600 x 400 mm
- Edge: 3 sides
- Silicone coating: Yes
- Material thickness: 1,5 mm
- Perforation: Yes
- Temperature resistant to: 260 °C

Code-No. 100416
GTIN 4015613734712

Grease drip container 600 x 400

STAINLESS
STEEL



- Bakery norm: 600 x 400 mm
- Material: Stainless steel
- Important information: -
- Size: W 605 x D 405 x H 45 mm
- Weight: 2.8 kg

Code-No. 525782
GTIN 4015613658414

Baking spray 500ml



- Content / can: 500 ml
- Material: 100 % vegetable oils
- Designed for: Greasing forms, baking trays, pans and waffle irons
- Important information: -
- Order quantity unit: 1 box of 6 cans (Minimum order quantity 2 boxes)

Code-No. 173060
GTIN 4015613498508

Convection baking oven MC6040-8

Add on Products

Partial desalination system TKD 13400 FB



- Desalination type: Partial desalination
- Water connection: 3/4"
- Material: Plastic
Glass-fibre reinforced
- Sampling tap: Yes
- Colour: Blue
- Important information: -

Code-No. 109878
GTIN 4015613681597

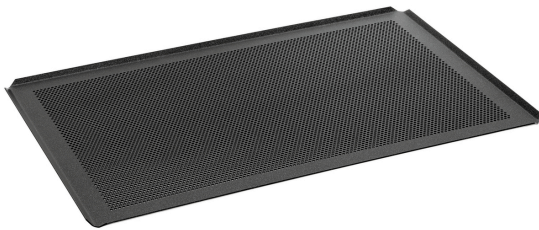
Baking tray 600x400-ALB



- Material: Non stick coating
Aluminium
- Perforation: No
- Material thickness: 2 mm
- Important information: -
- Edge: 4 sides
- Silicone coating: No

Code-No. 100439
GTIN 4015613863511

Perforated tray 600x400-ALB



- Perforation: Yes
- Material: Aluminium
Non stick coating
- Material thickness: 2 mm
- Important information: -
- Edge: 4 sides
- Silicone coating: No

Code-No. 100438
GTIN 4015613863504