

590LW



700800

ENGLISH

Table of contents

1. Safety 26
1.1 Safety instructions 26
1.2 Key to symbols 29
1.3 Proper use 30

2. General information 31
2.1 Liability and Warrantees 31
2.2 Copyright protection 31
2.3 Declaration of conformity 31

3. Transport, packaging and storage 32
3.1 Delivery check 32
3.2 Packaging 32
3.3 Storage 32

4. Technical data 33
4.1 Overview of parts 33
4.2 Technical specification 34

5. Installation and operation 34
5.1 Installation 34
5.2 Reversing the door 36
5.3 Operation 40

6. Cleaning and care 45

7. Possible Malfunctions 46

8. Waste disposal 48

Bartscher GmbH
Franz-Kleine-Str. 28
D-33154 Salzkotten
Germany

phone: +49 (0) 5258 971-0
fax: +49 (0) 5258 971-120



Read these instructions before using and keep them available at all times!

This instruction manual contains information about the installation, operation and maintenance of the device and should be consulted as an important source of information and reference guide.

Awareness of the safety instructions and instructions for use in this manual will ensure the safe and correct use of the device.

In addition to the information given here, you should comply with any local Health and safety Controls and generally applicable safety regulations.

The instruction manual forms part of the product and should be kept near the device and easily accessible for anyone carrying out the installation, servicing, maintenance or cleaning.

Please keep these instructions and give them to future owners of the device.

1.Safety

This device is designed in accordance with the presently applicable technological standards. However, the device can pose a danger if handled improperly and inappropriately.

All persons using the device must follow the recommendations and instructions in this manual.

1.1 Safety instructions

- The device is not intended for use by individuals (including children) with physical or mental disabilities, insufficient experience, and/or insufficient knowledge unless such persons are under the care of a person responsible for their safety or have received instructions regarding appropriate use of the device.
- Children should be observed to ensure that they are not playing with the device.
- Only use the device indoors.
- The device is not adapted for use with an external timer or remote control.

- Prevent access of children to the package materials like plastic bags and foamed polystyrene elements. **Suffocation hazard!**
- This device may only be operated in technically proper and safe condition.
- Only a qualified technician and using original spare parts and accessories should carry out repairs and maintenance of the device. **Do not attempt to repair the device yourself.**
- Do not use any accessory or spare parts that have not been recommended by the manufacturer. These can be dangerous for the user or lead to damages of the device or personal injury, and further, the warranty expires.
- To prevent hazards and to ensure optimum efficiency, no modifications or alterations to the device that are not explicitly approved by the manufacturer may be undertaken.



DANGER! Electric shock hazard!

To avoid the hazard results please follow the safety instructions below.

- Never allow the power cable to come into contact with heat sources or sharp edges. The power cable should not hang over the side of the working surface. Ensure that no one can step on or trip over the cable.
- The power cable must not be folded, bent or tangled, and must always remain fully unrolled. Never place the device or other objects on the power cable.
- Do not lay the power cable over carpets or other inflammable materials. Do not cover the cable. Keep away the cable from operating range and do not immerse it into water.
- Check the power cord regularly for damage. Do not use the device if the power cord is damaged. If this cable is damaged, it must be replaced by customer service or a qualified electrician in order to avoid dangers.

- The supply cable must be disconnected from the socket only by pulling the plug.
- Never carry or lift the device by the supply cable.
- In any case do not open the device housing. In case of electrical or mechanical modifications the **electric shock hazard** will occur.
- Never submerge the power cord and the plug in water or other liquids; never wash the device using jet water.
- Do not use any acid agents and make sure no water ingresses the device.
- **Never** operate the device with moist hands or standing on wet floor.
- Remove the plug from its socket:
 - when the device is not used,
 - in case of anomalies during operation,
 - before cleaning.



WARNING! Fire or explosion hazard!

To avoid the hazard results please follow the safety instructions below.

- Do not place any electrical devices, such as microwave ovens, hair dryer, irons, boiling pot, etc, on the top of the refrigerator. There is a risk of fire ignition to the plastic elements.
- Do not store the flammable or explosive substances in the device, like ether, kerosene, or glues.
- Do not clean the device with use of flammable liquids. The released vapours may cause fire or explosion.
- Do not store gasoline or other flammable substances in the vicinity of the device. The vapours may cause fire or explosion.
- Do not store the explosive objects in the device, like cans with explosive work substances.
- Do not allow for the cooling circuit damages.

1.2 Key to symbols

In this manual, symbols are used to highlight important safety instructions and any advice relating to the device. The instructions should be followed very carefully to avoid any risk of accident, personal injury or material damage.



WARNING!

This symbol highlights hazards which could lead to injury.



WARNING!

This symbol highlights dangerous situations which could lead to injury or death.



CAUTION!

This symbol highlights dangerous situations which could lead to light injuries, or damage, malfunction, and/or destruction of the device.



NOTE!

This symbol highlights recommendations and information aimed for effective and trouble-free device operation.

1.3 Proper use

The operational safety of the device is assured only in case of proper use, according to the operation manual.

All technical activities like installation and maintenance must be performed by the qualified service personnel only.

The refrigerator is designed only for cooling and storing relevant food and beverages.



CAUTION!

Any use going beyond the intended purpose and/or any different use of the device is forbidden and is not considered as conventional.

Any claims against the manufacturer or his authorized representative as a consequence of experiencing damages resulting from unconventional use are impossible.

The operator is liable for all damages resulting from inappropriate use.

2. General information

2.1 Liability and Warrantees

All the information and instructions in this manual take into account standard safety regulations, current levels of technical engineering as well as the expertise and experience we have developed over the years.

The instruction manual was translated with all due care and attention. However, we do not accept liability for any translation errors. The German version of this instruction manual is definitive.

If the delivery consists of a special model, the actual scope of delivery may differ from the descriptions and illustrations in this manual. This is also the case for special orders or when the device has been modified in line with new technology.



CAUTION!

Read this manual carefully and thoroughly before any operation of the device, and especially before turning it on!

Manufacturer **is not liable** for any damages or faults caused by:

- violation of advice concerning operation and cleaning;
- use other than designed;
- alterations made by user;
- use of inadequate spare parts.

We reserve the right to make technical changes for purposes of developing and improving the useful properties.

2.2 Copyright protection

The instruction manual including any texts, drawings, images or other illustrations is copyright. No part of this publication may be reproduced, transmitted or used in any form or by any means without permission in writing from the manufacturer. Any person who commits any unauthorized act in relation to this publication shall be liable to claims for damages. All rights reserved.



NOTE!

The contents, texts, drawings, pictures and any other illustrations are copyright and subject to other protection rights. Any person unlawfully using this publication is liable to criminal prosecution.

2.3 Declaration of conformity



The device complies with the current standards and directives of the EU. We certify this in the EC declaration of conformity. If required we will be glad to send you the according declaration of conformity.

3. Transport, packaging and storage

3.1 Delivery check

Please check the delivery upon completeness and transport damage immediately after receipt. In case of visible damage do not accept or accept the delivery with reservation only.

Note the extent of damage on the carrier's bill of delivery. Trigger off the complaint.

Hidden damages should be reclaimed immediately after notice, as claims for damages can only be asserted within the effective period for complaints.

3.2 Packaging

Please do not throw away the covering carton of your device as it might be useful for storage purposes, when moving or, in case of damages, when the device must be sent back to a repair center. The outer and inner packing material should be removed completely from the device before installation.



NOTE!

If you liked to dispose the packing, consider the regulations applicable in your country. Supply re-usable packing materials to the recycling.

Please inspect the device upon completeness. In case any part is missing please contact our customer service center immediately.

3.3 Storage

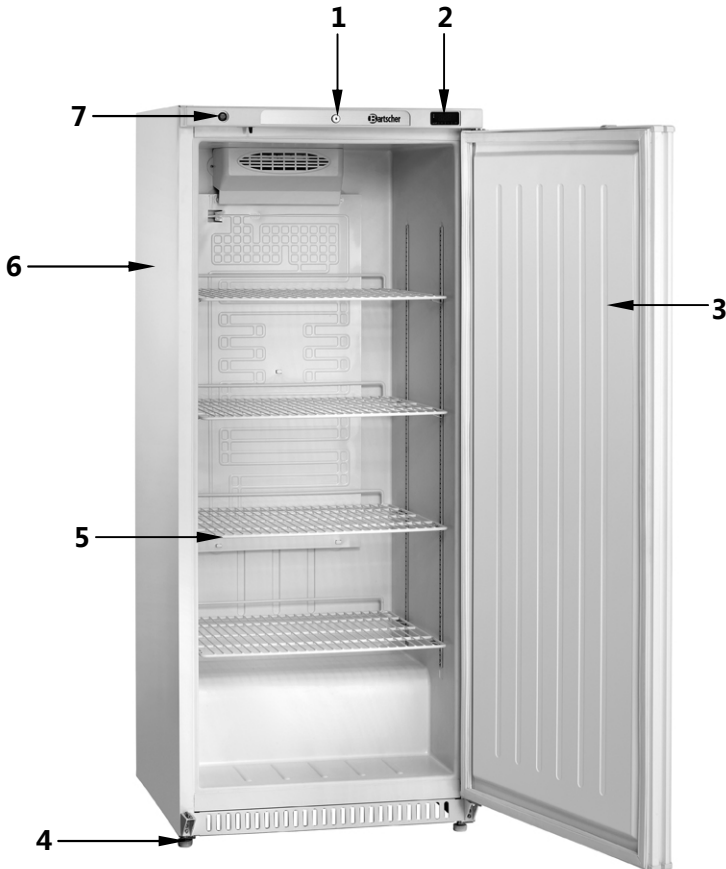
Keep the package closed until installation and under consideration of the outside indicated positioning- and storage markings.

Packages should be stored under consideration of the following:

- Do not store outdoors.
- Keep it dry and dust-free.
- Do not expose it to aggressive media.
- Do not expose it to direct sunlight.
- Avoid mechanical shocks and vibration.
- In case of longer storage (> 3 months) make sure you check the state of the packaging and the parts regularly.
If required refresh or renew.

4. Technical data

4.1 Overview of parts



- 1** Lock
- 2** Digital temperature control
- 3** Door
- 4** Feet (4), height adjustable
- 5** Grid trays (4)
- 6** Exterior
- 7** ON/OFF switch

4.2 Technical specification

Name	Refrigerator 590LW
Code-no.:	700800
Material:	exterior lacquered steel, interior ABS plastic
Equipment:	<ul style="list-style-type: none">• colour: white• forced-air cooling• digital control• automatic defrost function• for ambient temperatures up to max. 30°C• ON/OFF switch with indicator light• door self-closing, lockable• changeable door hinge
Capacity:	590 liters
Coolant:	R600a
Climate class:	4
Temperature range:	0 °C to 8 °C
Power:	0.26 kW / 220-240 V 50 Hz
Size:	W 735 x D 770 x H 1 910 mm
Weight:	101 kg
Includes:	4 height adjustable grid trays 2/1 GN made of steel, plastic coated

We reserve the right to make technical changes!

5. Installation and operation

5.1 Installation

Positioning

- Unpack the device and remove the packing materials.



CAUTION!

- **Never** remove the identification plate or warning signs from the device.
- Position the device in a safe place of a carrying capacity enough to support the weight of the device and its contents.
- **Never** place the device on a flammable surface.

- To avoid damage of the condenser during positioning or transportation, do not lean the device at angle more than 45°.
- **Do not** place the device close to open fire, electric stoves, heating stoves or other sources of heat such as sunshine. High temperature may damage the surface of the device and have adverse impact on cooling capacity or energy consumption.
- When positioning the device remember that the ambient temperature should not exceed max. 30 °C.
- Place the device in the way so that the relevant air circulation is secured. Leave the gap of at least 5 cm between the device and walls or other devices.
- **Never** cover or obstruct the ventilation grid of the device.
- **Do not** locate the device in a place with high humidity. The relative humidity in the place should not exceed max. 55 %. Higher humidity may have an adverse impact on the cooling performance of the device due to frost forming on the evaporator.
- You must not drill any openings or fix other objects onto the device.
- Do not place any heavy objects on the device.
- Position the device so that the power plug is available to immediately unplug the device from the mains, if needed.

Power supply



DANGER! Electric shock hazard!

The device can cause injuries due to improper installation!

Before installation and connecting the local power grid specification should be compared with that of the device

(see rating plate). Connect the device only in case of compliance!

Connect the device only to properly installed single socket with protective terminal.

- Before connecting the device to the power supply for the first time and starting its operation leave the device for at least 2 hours to let the cooling equilibrate to avoid failures.
- In the event of power supply cut or unplugging, do not plug in the device for at least 5 minutes.
- The electric socket should be provided with 16A circuit breaker. Only plug in directly to the wall socket. You must not use any adapter or extension block.

5.2 Reversing the door

- You can modify the refrigerator door opening direction from right to left, if needed.
- To modify the door opening direction, it is recommended to get help of another person.

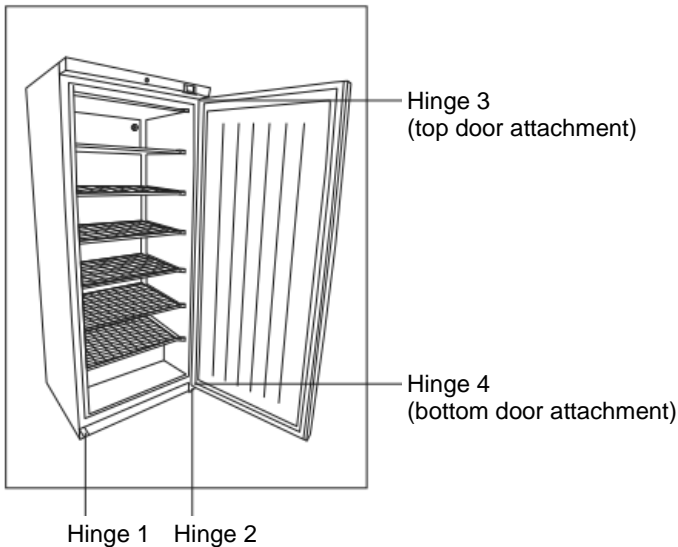


CAUTION!

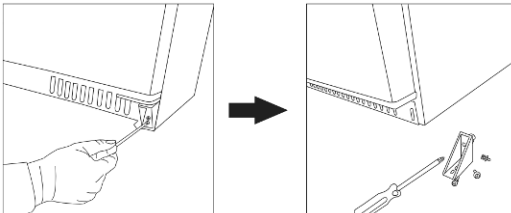
To reverse the door, do not place the refrigerator in a horizontal position.

Follow the instructions:

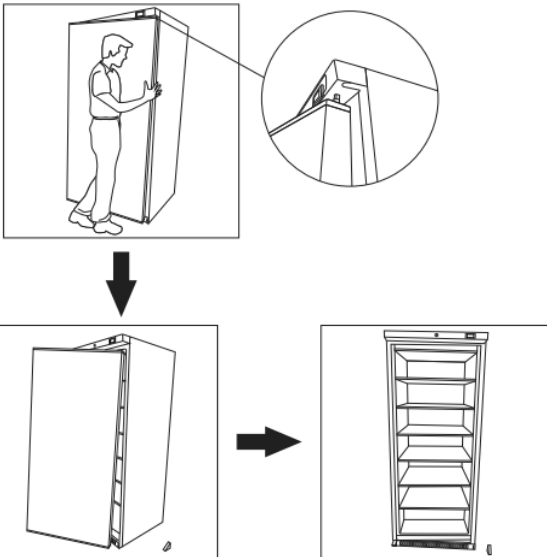
1. Before you start changing the door opening direction, switch off the device by unplugging.



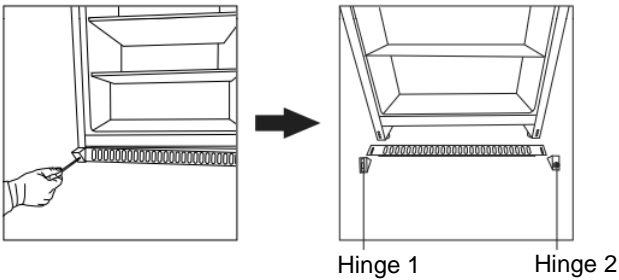
2. Unscrew hinge 2.



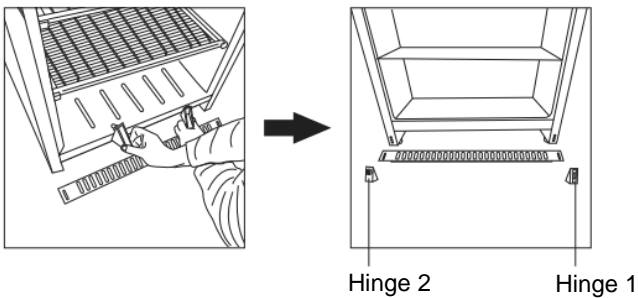
3. Remove the door.



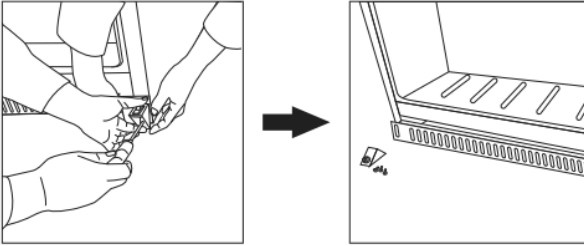
4. Unscrew hinge 1.



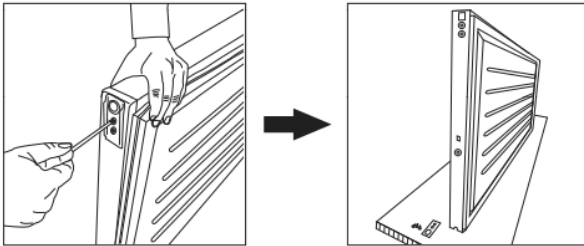
5. Reverse both hinges.



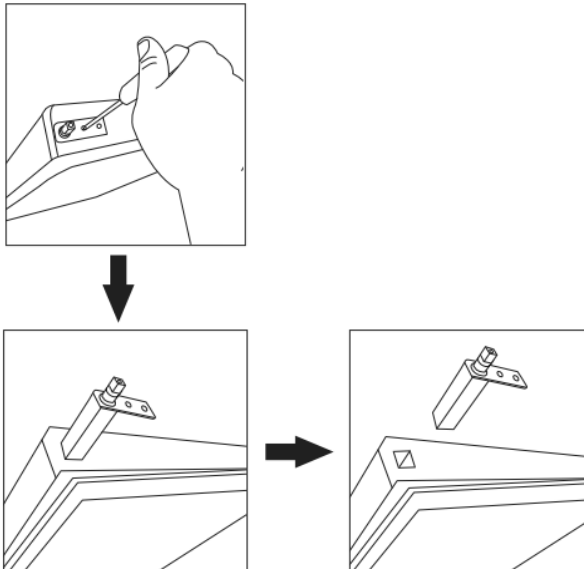
6. Attach hinge 1.



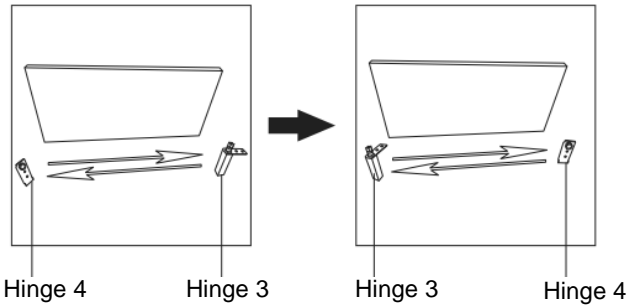
7. Unscrew hinge 4 from the bottom door attachment.



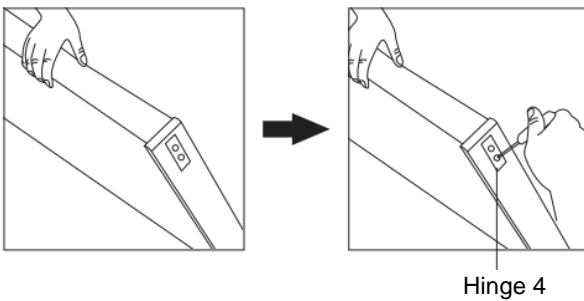
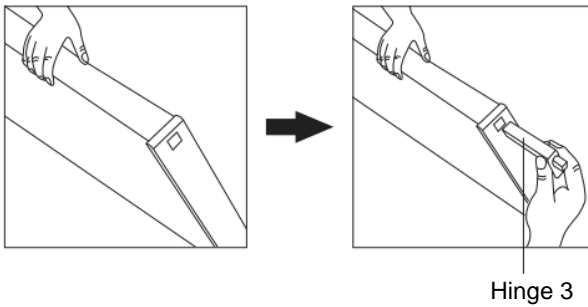
8. Unscrew hinge 3 from the bottom door attachment.



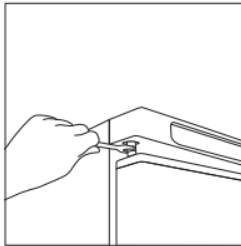
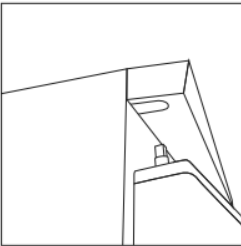
9. Reverse hinges 3 and 4.



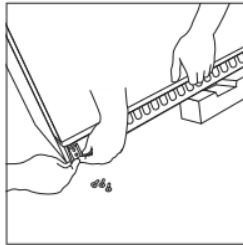
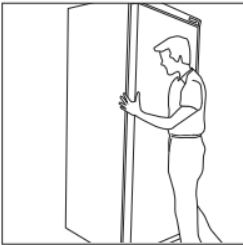
10. Secure hinges 3 and 4 to the door.



11. Rotate the door and attach it to the top door attachment.



12. Screw hinge 2 tight.

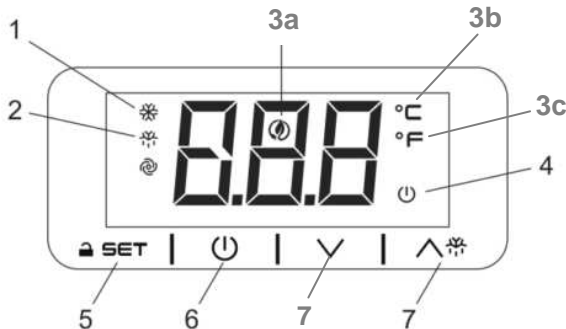







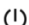




5.3 Operation

Preparation

- Before you start using the device, clean it thoroughly according to the instructions in point 6 “Cleaning”.
- Secure the grid trays to the rails in the device at a desired height.
- Adjust the height adjustable feet.

Control panel, indicators



- 1**  **Compressor LED indicator**
 LED glows: the compressor is on
 LED blinks:
 - setting of cooling mode parameters is in progress
 - compressor security is active
- 2**  **Defrosting LED indicator**
 LED glows: defrosting in progress
 LED blinks: condensation in progress
- 3a**  **Safe energy mode LED indicator**
 LED glows and the display is on: safe energy mode is activated
 LED glows and the display is off: the device is in the “snooze” mode
 Press the button to activate the display
- 3b**  **Celsius degree LED indicator**
 LED glows: Celsius degree temperature measure unit
- 3c**  **Fahrenheit degree LED indicator**
 LED glows: Fahrenheit degree temperature measure unit
- 4**  **ON/Standby LED indicator**
 LED glows: the device is off (Standby)
- 5**  **SET** **Programing button**
- 6**  **ON/Standby button**
- 7**  **Increase the set values / manual defrosting**
 **Decrease the set values**





Tips for the user

General information

The device may have the following status:

- **ON:** the device is connected to the electric power supply and switched on by the **ON/OFF** switch. You can set the temperature with the temperature control.
- **Standby:** the device is connected to the electric power supply, but has been switched off by the program, the temperature control is off.
- **OFF:** the device is not connected to the electric power supply.


Switch on/switch off the device

- Connect the device to the socket installed according to the legal requirements.
- Switch the device on with the **ON/OFF** switch located on the front of the device. The operation control light (green), integrated with the switch, will glow.
- Make sure that the digital temperature control buttons are not blocked and none of the processes (defrosting, cooling, etc.) is in progress.
- Press and hold the button  for 4 seconds. The LED  blinks and the Standby mode of the device starts. The LED  remains glowing when the device is in that mode.
- To change the mode to the ON mode, again press and hold the button  for 4 seconds.

Display

When the device is on, at the normal operation of the device, the interior temperature is displayed, except defrosting when the display shows “**dEF**”.

When the device is switched off with the **ON/OFF** switch the display is off as well.

When the device is in a “snooze” mode the LED  glows.



Automatic defrosting

Defrosting of the device is performed automatically by water evaporation.

At the default setting, the automatic defrosting is performed every 6 hours. The first defrosting cycle starts when you switch on the device for the first time.

Defrosting lasts 20 minutes. The next defrosting cycle starts after 6 hours.

Activation of manual defrosting

1. Make sure that the buttons are not blocked and none of the processes is in progress.
2. Press and hold the button  for 5 seconds. Defrosting shall be activated immediately. The defrosting LED indicator  glows and remains glowing until the defrosting has finished. The next defrosting process starts 6 hours after the end of the previous defrosting.

Blocking / unblocking buttons

Blocking the buttons:

1. Make sure that none of the processes is in progress.
2. Do not perform any setting during 30 seconds: the message “**Loc**” appears for 1 second on the display and the control panel buttons are blocked automatically.





When the control panel buttons are blocked the following functions are not available:



- switch **ON/OFF** the device
- indicate the temperature measured by the probe
- activate the manual defrosting
- set the working temperature

When you try to introduce a setting, the message “**Loc**” appears for 1 second on the display. Unblock the buttons before you start introducing a setting.

3. To unblock the buttons, press and hold for 2 seconds one of the buttons. The message “**UnL**” appears for 1 second on the display.

Modify/set required temperature

1. Make sure that the buttons are unblocked and none of the processes is in progress.
 2. Briefly press the button  **SET**, LED  blinks.
 3. In 15 seconds briefly press the button  or button .
- The parameters r1 (min. temperature) and r2 (max. temperature) appear on the display.

4. To initiate, briefly press the button  **SET** or do not make any modifications in 15 seconds: the LED  will stop glowing and the device will finish the setting mode.



NOTE!

Contact the service if you need to modify any other parameters.

Tips for user

To fully benefit from the performance capabilities of the device follow the instructions listed below.

- When you place food into the device make sure that there is a free air circulation secured in the device.
- More items in the refrigerator and longer the door stays open, more energy consumed.
- To minimize cooling losses in the device, minimize the time the door stays open. Also, do not open the door too often.
- Before you place any food or beverages into the refrigerator, cool them down to a relevant temperature.
- Placing the food items that have not cooled down yet has an adverse impact on the performance of the device and may cause harm to the already cooled items. To prevent cooled air loss in the refrigerator, avoid storing the food items in not cooled rooms.
- Store only packed and covered food items in the refrigerator.
- Do not store bananas in the refrigerator because the fruit is cold sensitive.
- The food items of a distinctive smell, such as fresh fish, foie gras, cheese, store in containers closed tight.
- Do not store pharmaceutical products or preserved blood in the refrigerator.
- When placing the food items into the device, remember that the maximum load of each tray is 30 kg.
- In the case of no power supply, do not open the door, if it is possible, to avoid the cooled air loss.
- The refrigerator should not be disconnected from the power supply for longer than 10 minutes.
- In the case of no power supply or unplugging, the refrigerator may be switched on again after at least 15 minutes.
- If you plan to leave the refrigerator switched off for longer time, leave the door ajar.

6. Cleaning and care



CAUTION!

Before cleaning, switch the device off via ON/OFF switch and disconnect it from the power supply (pull the plug out the socket!).

The device is not designed to be rinsed with running water.

Do not use a pressure washer to clean the device!

Be careful and do not let the water into the device.



CAUTION!

Never use **hot** water for cleaning the device!

Never use aggressive or coarse cleaning agents such as scouring powder, alcohol, solvents or other substances that could damage the device's surfaces.

Regular cleaning

- Clean the device regularly.
- Remove all food and beverages from the device and store it in a cool room.
- Remove the grid trays from the device and clean them with a soft cloth and mild cleaning agent.
- Thoroughly clean the interior and exterior of the device. Use a soft cloth and mild clearing agent.
- Clean the door seal with a soft cloth damped with warm water **without any cleaning agent**.
- Dry thoroughly all cleaned surfaces.
- If you plan not to use the device for longer time, leave it ajar to avoid unpleasant odours accumulation.
- Use a soft brush or dust brush to regularly remove dust and fibers from the rear wall of the device.

Care

A qualified member of the staff should regularly perform the following tasks:

- clean the condenser with relevant tools (vacuum cleaner or soft brush);
- check the electrical connection;
- check the thermostats and sensors.

7. Possible Malfunctions

In case of malfunction, disconnect the device from its power source. Before contacting the service or sales agent, verify - based on the table below - whether it is possible to eliminate disruption in operation.

Problem	Cause	Solution
No operation (the device does not work)	<ul style="list-style-type: none"> • The plug is not correctly placed in the socket. • Damaged socket • Damaged plug • The device is not switched on 	<ul style="list-style-type: none"> • Properly place the plug in the socket. • Check the device by plugging in to another socket. • Contact the service • Switch the device on
The device is switched on but the temperature is too high/too low	• Too much frost on the evaporator	• Initiate defrosting
	• Dusty condenser	• Clean the condenser thoroughly
	• The door not closed tight	• Check if the door is closed and if the door seal is not damaged.
	• The device is placed near a source of heat	• Make sure that the device is installed away from any source of heat
	• Ambient temperature too high	• Secure a good air circulation where the device is installed or place the device in a cooler room
	• Food placed into the device is too hot	• Remove the hot food from the device
	• The device is overloaded	• Reduce the stored amount of food and beverages
The device is not water tight, water flows out	• The device is not levelled.	• Level the device with the adjustable feet
	• The drain outlet is blocked	• Clean the drain outlet

Problem	Cause	Solution
The device works worryingly loud	• Loose screws/nuts	• Screw the screws/nuts tight
	• The device is not placed on an even and stable surface	• Place the device on an even and stable surface

If the problems in operation cannot be eliminated:

- **do not** open the body,
- inform the service or contact the supplier providing:
 - kind of a problem;
 - code number and serial number (see identification plate at the rear wall of the device).

The following does not indicate any problem or failure:

- Sounds produced during operation of the device are normal and do not indicate a failure.
- A sound of splashing, gurgling or humming comes from the coolant circulating in the cooling system.
- You can hear a short, louder sound of whining or clicking when the compressor starts up.

8. Waste disposal

Discarding old devices

At the end of its service life the discarded device has to be disposed in accordance with the national regulations. It is advisable to contact a company which is specialized in waste disposal, or just contact the local disposal service in your community.



WARNING!

To exclude any abuse and the dangers involved make the waste device unfit for use before disposal. For that purpose disconnect device from mains supply and remove mains connection cable from the device.



CAUTION!



For the disposal of the device please consider and act according to the national and local rules and regulations.