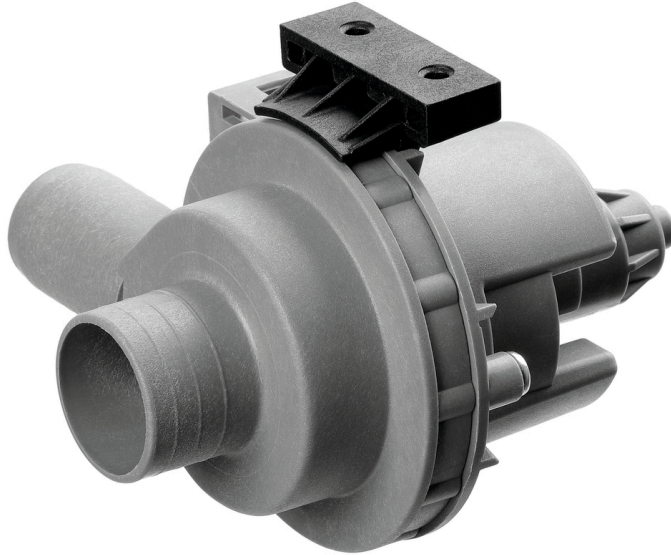


Drain pump set LPS50



- ▶ Designed for pass-through dishwashers
 - ✓ DS 500
 - ✓ DS 500 SR



- ▶ Including connecting hoses and installation material

Description

For retrofitting pass-through dishwashers DS 500 and DS 500 SR.

Features

- Power load: 0,04 kW | 230 V | 50 Hz
- Properties: -
- Material: Plastic
- Important information: -
- Set comprises: 1 pump
Connection hoses
- Designed for: Pass-through dishwasher DS 500
Pass-through dishwasher DS 500 SR
- Size: W 259 x D 254 x H 369 mm
- Weight: 1.4 kg