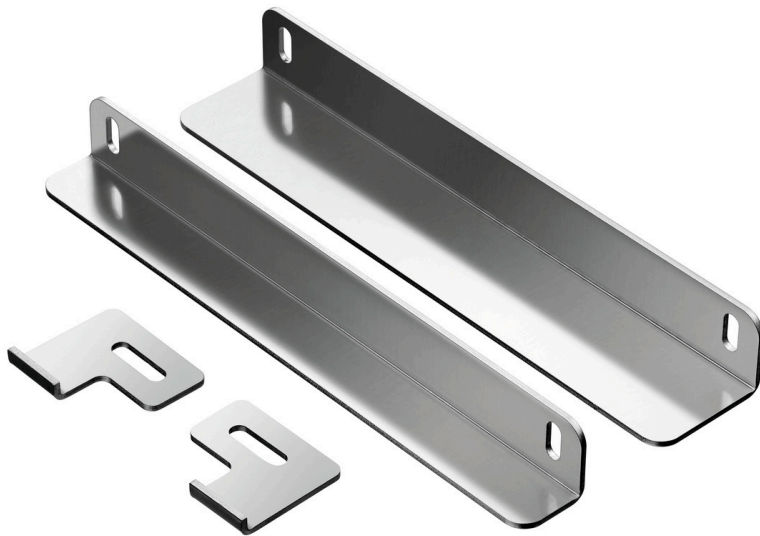


Assembling kit ZAT 10



- ▶ For using the Bartscher entry and exit tables in connection with the continuous dishwashers DS Eco500LPR and "Delta-Clean LP"



Description

Features

- Material: CNS 18/10
- Important information: -
- Properties: For using the Bartscher entry and exit in connection with the continuous dishwasher DS Eco500LPR
- Size: W 295 x D 97 x H 38 mm
- Weight: 1.2 kg